

Pulmonary Embolism Mortality Associated with the Necessity of Being Hospitalized Outside the Canton of Residence in Ecuador

David Garrido ^{1*}, Esteban Visarrea ², Juan Benalcazar ³

¹Hematology Department, Hospital de Clínicas Manuel Quintela, Universidad de la República, URUGUAY

²Facultad de Medicina, Universidad Central del Ecuador, Quito, ECUADOR

³Hospital de Especialidades de las Fuerzas Armadas N°1, Angiology and Vascular Surgery Service, Quito, ECUADOR

*Corresponding Author: david_labinmuno@hotmail.com

Citation: Garrido D, Visarrea E, Benalcazar J. Pulmonary Embolism Mortality Associated with the Necessity of Being Hospitalized Outside the Canton of Residence in Ecuador. *Electron J Gen Med.* 2021;18(3):em294. <https://doi.org/10.29333/ejgm/10860>

ARTICLE INFO

Received: 25 Dec. 2020

Accepted: 1 Feb. 2021

ABSTRACT

Introduction: Pulmonary embolism (PE) is a common cause of cardiovascular death, with hospital mortality rates in South America around 14%. However, there is limited information regarding Ecuador.

Objectives: To present a survival analysis of Ecuadorian patients affected by PE.

Methods: We performed a survival analysis study based on the retrospective review of the hospital discharges by PE in Ecuador from 2011 to 2018 through the Ecuadorian National Statistics and Census Institute databases.

Results: We found 2974 cases of PE. From them, 505 (16.98%) patients deceased, 59.72% were females, 64.79% had an age ≥ 60 years with an average of 65.04 years, 19.80% were treated outside their canton of residence, and 7.57% were associated to acute cor pulmonale (ACP).

Using the Cox regression model, being treated outside the canton of residence (HR 1.40, $p < 0.05$) and age ≥ 60 years (HR 1.64, $p < 0.05$) reduced the overall survival. Contrasting, the absence of ACP improved the OS (HR 0.68, $p < 0.05$).

Excluding patients aged ≥ 60 years, and with ACP, being treated outside the canton of residence increased the risk of death by PE (HR 1.77, $p < 0.05$). However, this effect was non significant in patients ≥ 60 years of age and with ACP ($p > 0.05$).

Conclusion: Patients treated by PE outside their canton of residence had an increased risk of mortality during the in-hospital stay, especially those younger than 60 years without ACP.

Keywords: thrombosis, pulmonary embolism, mortality, Ecuador

INTRODUCTION

Pulmonary embolism (PE) is a disease related to venous thromboembolism (VTE) and is considered one of the most common causes of cardiovascular death after myocardial infarction and stroke [1].

The global average incidence of venous thromboembolism (VTE) is 1-2 cases per 1 000 people by year, with an estimated PE incidence ranging from 39 to 115 per 100 000 population in Hong Kong and the United States (US), respectively [2,3].

Hospital mortality rates for any ICD-10 (International Classification of Diseases, Tenth Revision) listed PE in the US decreased significantly during the past decade, presenting mortality of 11.4%, 7.8%, 7.8%, and 7.1%, for the periods 2001-2002, 2003-2004, 2005-2006, and 2007-2008, sequentially [4]. In contrast, in South America, the hospital mortality rate of PE is higher than the reported in developed countries, with 12% in Argentina, 14.1% in Brazil, and 14.8% in Colombia [5-7].

We recently found that most hospitalized Ecuadorian patients with pulmonary embolism died during the first days of the in-hospital stay [8]. This result encompasses the evidence

that most patients succumb within the early hours of presentation [9]. Therefore, this study aims to present a survival analysis regarding the impact of the need to be hospitalized outside the canton of residence in patients affected by PE, through the Instituto Nacional de Estadísticas y Censos (Ecuadorian National Statistics and Census Institute, INEC) databases, from 2011 to 2018.

METHODS

We performed a survival analysis study based on the retrospective review of the hospital discharges by PE in Ecuador from 2011 to 2018.

Ecuador is a country located to the northwest of South America and borders Colombia to the North, the Pacific Ocean to the West, and Peru to the South and East. The country crosses the Equatorial line and has approximately 17 million inhabitants living in 283 560 km². It is administrative divided into 24 provinces, with 221 cantons (**Figure 1**).

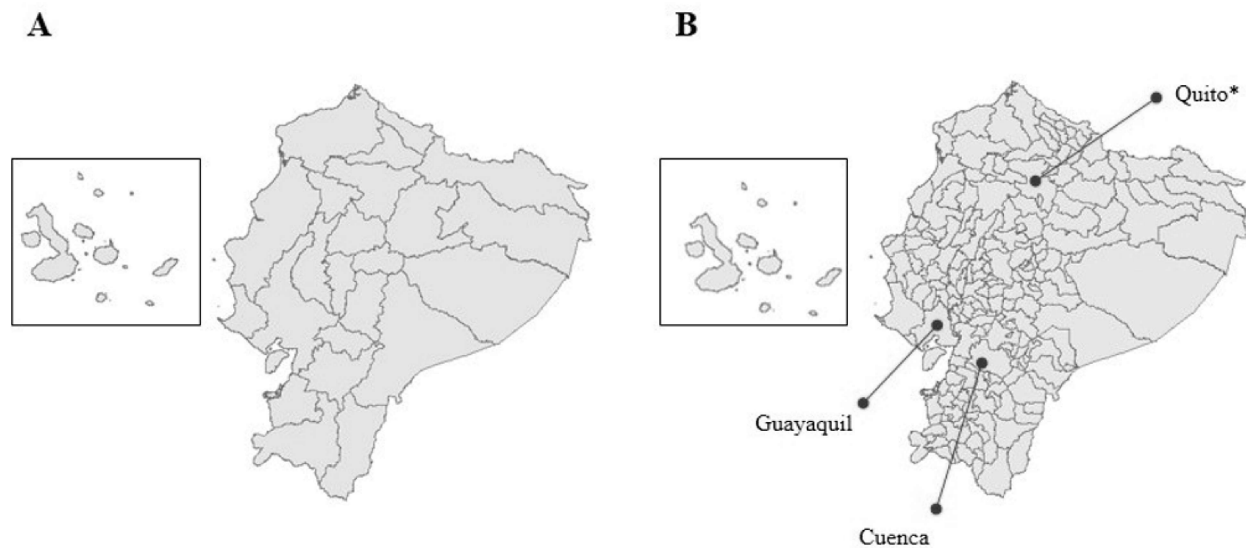


Figure 1. Political and administrative division of Ecuador. A) provinces; B) cantons

Data Obtention

Data was extracted from governmental databases published each year by INEC. This information is published in SPSS format and is freely available on the web site of the institution.

The datasets analyzed during the current study are available in the (Ecuador en Cifras: Camas y Egresos Hospitalarios) page, (<https://www.ecuadorencifras.gob.ec/camas-y-egresos-hospitalarios/>).

As the SPSS document has information about all the hospitalizations reported in the country each year, we used the ICD-10 code I26 to find the patients affected by PE. Additionally, INEC presents a sub-classification of PE in; PE with acute cor pulmonale (ICD-10 I26.0) and PE without acute cor pulmonale (ICD-10 I26.9).

For this study, we included the following information; the total number of hospital discharges (HD) distributed by year, the total number of cases with death as the cause of HD each year, diagnosis and sub-classification of acute cor pulmonale, condition at discharge, in-hospital stay days, and demographic characteristics including age, sex, and if the patient was treated in a different canton outside its residence.

Definitions

To define the hospital mortality rate, we used the equation ((number of patient discharges due to hospital death in a period/number of hospital discharges in the same period) x 100).

In-hospital stay days was defined as the time in which patients remained hospitalized from the admission until discharge.

Acute cor pulmonale refers to a form of acute right heart failure produced by a sudden increase in resistance to blood flow in the pulmonary circulation.

Statistical Analysis

Statistical analysis was made using SPSS V.25 software and Microsoft Excel 2013. Survival analysis was performed using the Cox regression model along with hazard ratios. With the information provided through this method, we develop a points scoring system to assess in-hospital mortality risk.

RESULTS

We found 2974 cases of PE. From them, 505 (16.98%) patients deceased. Regarding the characteristics of the patients, 59.72% were females, 64.79% had an age ≥ 60 years with an average of 65.04 years, 84.97% cases had a hospital length-of-stay ≤ 15 days, 19.80% were treated outside their canton of residence, and 7.57% had a diagnosis of PE with acute cor pulmonale.

Using the multivariate Cox regression model, we found that being treated outside the canton of residence, (HR 1.40, 95% CI 1.14 to 1.71) and age ≥ 60 years (177HR 1.64, 95% CI 1.34 to 2.01) impacted negatively the overall survival during the hospitalization ($p < 0.05$) (**Figure 1A**). Sex did not influenced OS (HR 1.06, 95% CI 0.89 to 1.27). Not being diagnosed with ACP was associated with an improved OS (HR 0.68, 95% CI 0.52 to 0.90, $p < 0.05$).

After excluding patients aged ≥ 60 years, and those with ACP, being treated outside the canton of residence increased the risk of death during hospitalization ($n=983$) (HR 1.77, 95% CI 1.18 to 2.64, p under 0.05) (**Figure 1B**). However, this effect was non-significative in those patients with age ≥ 60 years with ACP (HR 0.91, 95% CI 0.42 to 2.00).

In patients treated outside the canton of residence, 296 (50.25%) were also treated outside the province of residence. In this context, in the group of patients treated outside the province of residence, 157 (52.33%) were treated in Quito, 36 (12%) in Cuenca, and 36 (12%) in Guayaquil.

DISCUSSION

In this study, being treated outside the canton of residence, along with acute cor pulmonale, and age ≥ 60 years, were associated with an increased risk of in-hospital mortality by PE in the Ecuadorian population. However, being treated outside the canton of residence had a significative effect especially in patients younger than 60 years of age, and without ACP.

As was reported globally, most patients affected by PE had 60 years of age or more [9].

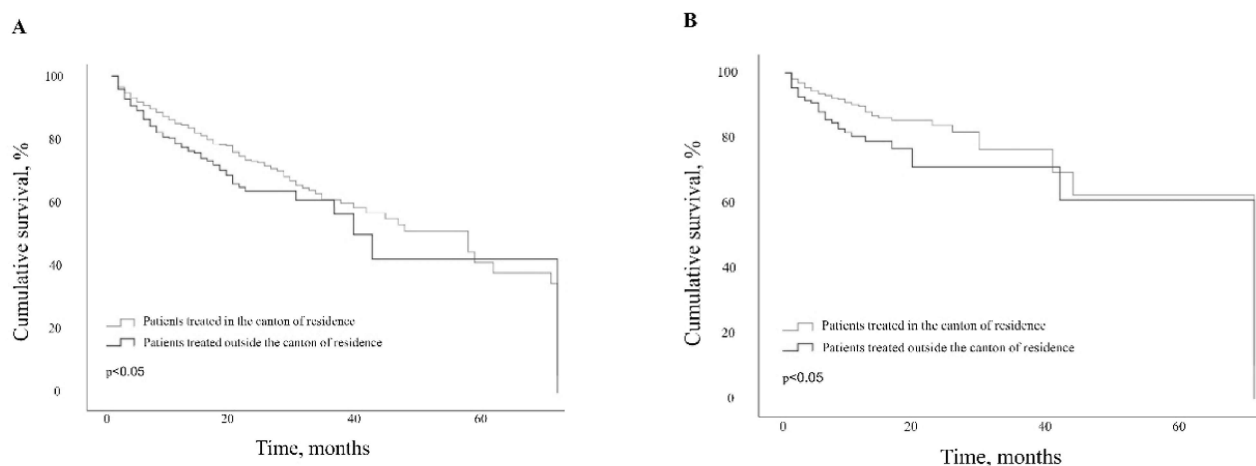


Figure 2. A) Cumulative survival of patients treated outside the canton of residence vs. those treated inside the canton of residence; B) Cumulative survival of patients aged < 60 years and without acute cor pulmonale treated outside the canton of residence vs. those treated inside the canton of residence.

As established in the Pulmonary Embolism Severity Index (PESI), age is associated with an increased risk of mortality, along with factors that may be related to acute cor pulmonale such as pulse ≥ 110 /minute, systolic blood pressure < 100 mm Hg, and respiratory rate ≥ 30 /minute, coinciding with our results [10]. In line with these results, a study in elderly patients diagnosed with VTE, found as independent predictors of overall mortality age (HR 1.32, 95% CI 1.05-1.65, per decade), active cancer (HR 5.80, 95% CI 4.22-7.97), systolic blood pressure <100 mm Hg (HR 2.77, 95% CI 1.56-4.92), diabetes mellitus (HR 1.50, 95% CI 1.02-2.22), low physical activity level (HR 1.92, 95% CI 1.38-2.66), poly pharmacy (HR, 1.41, 95% CI 1.01-1.96), anemia (HR 1.48, 95% CI 1.07-2.05), high-sensitivity C-reactive protein >40 mg/L (HR 1.88, 95% CI 1.36-2.60), ultra-sensitive troponin >14 pg/mL (HR 1.54; 95% CI 1.06-2.25), and D-dimer >3000 ng/mL (HR 1.45; 95% CI 1.04-2.01) [11].

Increased age is a well-described risk factor for suffering VTE, especially the first episode [12]. Also, aging is a condition characterized by multiple comorbidities, which may influence the poor outcomes seen in this group of patients, and is associated with impaired hemostasis mechanisms, increasing both thrombotic and hemorrhagic risk [13].

We found that being treated outside the canton of residence increases the mortality risk. This observation may be related to a delay in the treatment, but we cannot know the precise explanation for this association. However, in favor of this hypothesis, patients with delays in PE diagnosis had a significantly higher probability of unfavorable outcomes (i.e., death, shock, or recurrent venous thromboembolism) at 30 days [14]. Additionally, and linked with high-risk PE, delayed thrombolytic therapy is associated with an increased risk of mortality [15].

Limitations

Firstly, even when the national registry presented by INEC uses data from public and private institutions in the country, the number of hospital discharges is lower than we can expect. In this context, we believe a significant number of patients are not diagnosed, a situation that concerns us.

As this study is registry-based, the main limitation presented is that we did not have access to clinical and paraclinical information of each patient. These factors do not

allow us to analyze how comorbidities influence the overall survival in elderly patients, which is relevant.

Another factor that would be useful to analyze is the type of anticoagulant used, its dose, and the use of thrombolytic therapy in high-risk PE.

Regarding the patients treated outside its canton of residence, it would be interesting to know the time of delay in diagnosis and treatment.

Regarding the definition of acute cor pulmonale, physicians use this code as it is classified in the ICD-10.

In many acute cor pulmonale cases, we believe that there was no echocardiogram evaluation of right ventricle failure. However, there are any published data to confirm this assumption.

To overcome these limitations, we suggest conducting more studies.

Conclusion

Patients treated by PE outside their canton of residence had an increased risk of mortality during the in-hospital stay, especially those younger than 60 years of age without ACP.

Author contributions: All authors have sufficiently contributed to the study, and agreed with the results and conclusions.

Funding: No funding source is reported for this study.

Declaration of interest: No conflict of interest is declared by authors.

REFERENCES

- Barco S, Mahmoudpour SH, Valerio L, Klok FA, Münzel T, Middeldorp S, et al. Trends in mortality related to pulmonary embolism in the European Region, 2000-15: analysis of vital registration data from the WHO Mortality Database. *Lancet Respir Med* 2020;8(3):277-87. [https://doi.org/10.1016/S2213-2600\(19\)30354-6](https://doi.org/10.1016/S2213-2600(19)30354-6)
- White RH. The epidemiology of venous thromboembolism. *Circulation* 2003;107(23 Suppl 1):I4-8. <https://doi.org/10.1161/01.CIR.0000078468.11849.66> PMID:12814979
- Wendelboe AM, Raskob GE. Global Burden of Thrombosis: Epidemiologic Aspects. *Circ Res* 2016;118(9):1340-7. <https://doi.org/10.1161/CIRCRESAHA.115.306841> PMID:27126645

4. Tsai J, Grosse SD, Grant AM, Hooper WC, Atrash HK. Trends in in-hospital deaths among hospitalizations with pulmonary embolism. *Arch Intern Med* 2012;172(12):960-1. <https://doi.org/10.1001/archinternmed.2012.198> PMID:22473671
5. Cigalini I, Igolnikof D, Scatularo C, Jauregui J, Bernal M, García SZ, et al. Acute Pulmonary Embolism in Argentina. XX CONAREC Registry. *Rev Argent Cardiol*. 2019;87(2):131-6. <https://doi.org/10.7775/rac.87.2.14603>
6. Ceresetto JM. Venous thromboembolism in Latin America: a review and guide to diagnosis and treatment for primary care. *Clinics* 2016;71(1):36-46. [https://doi.org/10.6061/clinics/2016\(01\)07](https://doi.org/10.6061/clinics/2016(01)07)
7. Dennis RJ, Rojas MX, Molina A, Roa J, Granados M, Londoño A, et al. Clinical course and survival in pulmonary embolism: Results of the Colombian multicentric registry (EMEPCO). *Acta Med Colomb*. 2008;33(3):111-6.
8. Garrido D, Visarrea E. Comment on the published paper entitled Predictors of Early Death in Patients with Acute Pulmonary Embolism by Akgüllü Ç et al. *Am J Emerg Med*. 2020 Jun 10:S0735-6757(20)30497-6. <https://doi.org/10.1016/j.ajem.2020.06.015> PMID:32601005
9. Bělohávek J, Dytrych V, Linhart A. Pulmonary embolism, part I: Epidemiology, risk factors and risk stratification, pathophysiology, clinical presentation, diagnosis and nonthrombotic pulmonary embolism. *Exp Clin Cardiol*. 2013;18(2):129-38.
10. Aujesky D, Obrosky DS, Stone RA, et al. Derivation and validation of a prognostic model for pulmonary embolism. *Am J Respir Crit Care Med* 2005;172:1041-6. <https://doi.org/10.1164/rccm.200506-862OC> PMID:16020800 PMCID:PMC2718410
11. Faller N, Limacher A, Méan M, Righini M, Aschwanden M, et al. Predictors and Causes of Long-Term Mortality in Elderly Patients with Acute Venous Thromboembolism: A Prospective Cohort Study. *Am J Med*. 2017 Feb;130(2):198-206. <https://doi.org/10.1016/j.amjmed.2016.09.008>
12. Engbers MJ, van Hylckama Vlieg A, Rosendaal FR. Venous thrombosis in the elderly: incidence, risk factors and risk groups. *J Thromb Haemost*. 2010 Oct;8(10):2105-12. <https://doi.org/10.1111/j.1538-7836.2010.03986.x> PMID:20629943
13. Ochi A, Adachi T, Inokuchi K, Ogawa K, Nakamura Y, Chiba Y, et al. Effects of Aging on the Coagulation Fibrinolytic System in Outpatients of the Cardiovascular Department. *Circ J*. 2016;80(10):2133-40. <https://doi.org/10.1253/circj.CJ-16-0530> PMID:27568850
14. Goyard C, Côté B, Looten V, Roche A, Pastré J, Marey J, et al. Determinants and prognostic implication of diagnostic delay in patients with a first episode of pulmonary embolism. *Thromb Res*. 2018;171:190-8. <https://doi.org/10.1016/j.thromres.2018.08.015> PMID:30190113
15. Beydilli İ, Yılmaz F, Sönmez BM, Kozacı N, Yılmaz A, Toksul IH, et al. Thrombolytic therapy delay is independent predictor of mortality in acute pulmonary embolism at emergency service. *Kaohsiung J Med Sci*. 2016;32(11):572-8. <https://doi.org/10.1016/j.kjms.2016.09.004> PMID:27847100