



OPEN ACCESS

EDITED BY

Vanina Gabriela Da Ros,
CONICET Instituto de Biología y
Medicina Experimental (IBYME),
Argentina

REVIEWED BY

Sandra Amaral,
University of Coimbra, Portugal
Clara Isabel Marin-Briggiler,
CONICET Instituto de Biología y
Medicina Experimental (IBYME),
Argentina

*CORRESPONDENCE

Rossana Sapiro,
rsapiro@fmed.edu.uy

[†]These authors share seniorship and last authorship

SPECIALTY SECTION

This article was submitted to Molecular and Cellular Reproduction, a section of the journal Frontiers in Cell and Developmental Biology

RECEIVED 22 April 2022

ACCEPTED 08 July 2022

PUBLISHED 30 August 2022

CITATION

Irigoyen P, Pintos-Polasky P, Rosa-Villagran L, Skowronek MF, Cassina A and Sapiro R (2022), Mitochondrial metabolism determines the functional status of human sperm and correlates with semen parameters. *Front. Cell Dev. Biol.* 10:926684. doi: 10.3389/fcell.2022.926684

COPYRIGHT

© 2022 Irigoyen, Pintos-Polasky, Rosa-Villagran, Skowronek, Cassina and Sapiro. This is an open-access article distributed under the terms of the [Creative Commons Attribution License \(CC BY\)](https://creativecommons.org/licenses/by/4.0/). The use, distribution or reproduction in other forums is permitted, provided the original author(s) and the copyright owner(s) are credited and that the original publication in this journal is cited, in accordance with accepted academic practice. No use, distribution or reproduction is permitted which does not comply with these terms.

Mitochondrial metabolism determines the functional status of human sperm and correlates with semen parameters

Pilar Irigoyen¹, Paula Pintos-Polasky¹, Lucia Rosa-Villagran¹, Maria Fernanda Skowronek¹, Adriana Cassina^{2,3†} and Rossana Sapiro^{1,3*†}

¹Departamento de Histología y Embriología, Facultad de Medicina, Universidad de la República, Montevideo, Uruguay, ²Departamento de Bioquímica, Facultad de Medicina, Universidad de la República, Montevideo, Uruguay, ³Centro de Investigaciones Biomédicas (CEINBIO), Facultad de Medicina, Universidad de la República, Montevideo, Uruguay

The diagnosis of male infertility is based essentially on the patient's medical history and a standard semen analysis. However, the latter rarely provides information on the causes of a possible infertility, emphasizing the need to extend the analysis of the sperm function. Mitochondrial function has been associated with sperm function and dysfunction, the latter primarily through the production of excessive amounts of reactive oxygen species (ROS). We hypothesized that analysis of sperm mitochondrial metabolism together with sperm ROS production could be an additional tool to improve routine semen analysis, after appropriate validations. To test our hypothesis, we performed several experiments using a non-routine method (high-resolution respirometry, HRR) to access mitochondrial function. First, we investigated whether mitochondrial function is related to human sperm motility and morphology. When mitochondrial metabolism was challenged, sperm motility decreased significantly. Additionally, morphological abnormalities in the sperm mid-piece and mitochondria were associated with global sperm defects evaluated by routine methods. Subsequently, sperm mitochondrial function was assessed by HRR. Respiratory control ratio (RCR) was determined and evaluated in the context of classical sperm analysis. In parallel, sperm hydrogen peroxide (H₂O₂) production and seminal plasma (SP) antioxidant capacity were measured. The percentage of sperm with progressive motility correlated positively with RCR, SP antioxidant capacity, and negatively with the concentration of extracellular H₂O₂ production ([H₂O₂]). The percentage of normal sperm morphology correlated positively with RCR and negatively with [H₂O₂]. Sperm morphology did not correlate with seminal plasma antioxidant capacity. Furthermore, Receiver Operating Characteristic curves were used for the first time to test the diagnostic ability of RCR, [H₂O₂], and SP antioxidant capacity as binary classifiers. An RCR cut off value of 3.2 was established with a sensitivity of 73% and a specificity of 61%, using reference values considered normal or abnormal in routine semen analysis. The cut off value for [H₂O₂] was 0.2 μM/10⁶ sperm (sensitivity = 65%, specificity = 60%). There were no reference values for SP

antioxidant capacity that distinguished between abnormal and normal sperm samples. We conclude that sperm mitochondrial function indices in combination with $[H_2O_2]$ may be useful tools to complement the routine semen analysis.

KEYWORDS

mitochondria, sperm metabolism, antioxidant status, respirometry assay, reactive oxygen species, male fertility

Introduction

Infertility is a growing problem worldwide, affecting up to 15% of couples of childbearing age (Vander Borgh and Wyns, 2018). Although the male factor is responsible for at least 30–40% of cases, the male contribution to infertility among couples has not traditionally been emphasized (Barratt et al., 2018; De Jonge and Barratt, 2019). Male infertility diagnosis is mainly based on the patient's clinical history, clinical examination, and the analysis of standard semen parameters according to the World Health Organization guidelines, which rarely determines the causes or point to possible treatments (WHO, 2010; WHO, 2021; Barratt et al., 2022; Björndahl and Kirkman Brown, 2022). In some cases of male infertility altered parameters in the spermogram have been detected during semen analysis, but even when endocrine, genetic, and biochemical laboratory tests are added to the male examination (Kliesch, 2014), no cause associated with male infertility is found. These cases are considered as idiopathic and may account for 30–40% of male infertility (Kliesch, 2014). This situation severely limits treatment strategies to rescue fertility, so the inclusion of laboratory advanced tests to the routine semen analysis may assist in accurately diagnosis of male infertility (Agarwal and Bui, 2017).

There are numerous data showing a correlation between semen parameters and both, mitochondrial morphology and function (Wilton et al., 1992; Gopalkrishnan et al., 1995; Mundy et al., 1995; Courtade et al., 1998; Marchetti et al., 2002; Gallon et al., 2006; Amaral and Ramalho-Santos, 2010; Pelliccione et al., 2011; Cassina et al., 2015; Uribe et al., 2017; Durairajanayagam et al., 2021; Tanga et al., 2021). Furthermore, fertilization rate might be related to the proportion of normal mitochondrial structure (Baccetti et al., 2002) and mitochondrial function has been associated to the ability of spermatozoa to fertilize oocytes in mice (Ferreira et al., 2021; Giaccagli et al., 2021) and in humans (Kasai et al., 2002; Malić Vončina et al., 2016; Boguenet et al., 2021).

Despite the large body of data pointing to the importance of mitochondria in sperm function, the mechanisms by which this organelle operates in the male gamete are not fully understood, mainly in what concerns metabolic aspects. Specifically, in many species, including mice (Miki et al., 2004; Mukai and Okuno 2004; Castellini et al., 2021) and humans (Nascimento et al., 2008), is claimed that glycolysis would be used as a preferential pathway to synthesize ATP for maintaining sperm motility. Yet,

we and others have previously shown that mitochondrial function is associated to sperm motility in men (Marchetti et al., 2002; Gallon et al., 2006; Amaral and Ramalho-Santos, 2010; Cassina et al., 2015; Uribe et al., 2017), and that coupling efficiency (that reflects the ability to produce mitochondrial ATP) is associated to the cell's ability to fertilize in mice (Ferreira et al., 2021). All in all, previous result, obtained independently, suggest that ATP produced by mitochondria can make an important contribution to sperm function. When producing ATP, in analogy to somatic cells, sperm mitochondria are the major source of reactive oxygen species (ROS) (Aitken et al., 2012b; Cassina et al., 2015). During cellular respiration, approximately 0.2% of the oxygen consumed is converted to superoxide anions through electron leakage from the mitochondrial electron transport chain (Boveris and Chance, 1973; Nohl et al., 2003; Quijano et al., 2007). In the mitochondrial matrix and intermembrane space, superoxide interacts with the antioxidant enzyme superoxide dismutase, which catalyzes the dismutation of superoxide to hydrogen peroxide (H_2O_2) (Messner and Imlay, 2002; Wang et al., 2018). The H_2O_2 diffuses through biological membranes and can be measured in the extracellular space (Cardoso et al., 2012; Wang et al., 2018). The $O_2^{\bullet-}$ reacts quickly with NO to form peroxynitrite. Low levels of $O_2^{\bullet-}$, H_2O_2 and peroxynitrite, modulate cellular functions, but when they are produced in excess cause nitro-oxidative damage (Quijano et al., 2007). Nitro-oxidative stress is associated with altered semen parameters and abnormalities in the process of fertilization and pregnancy (Twigg et al., 1998; Agarwal et al., 2014a; Walters et al., 2020). In addition, mitochondrial dysfunction is associated with an increase in nitro-oxidative damage in sperm and a decrease in sperm motility (Cassina et al., 2015).

Sperm lose most of their cytoplasm and its organelles during differentiation, including some of the cell's antioxidant defenses. It is postulated that the lack of antioxidant enzymes in spermatozoa is compensated by a high antioxidant capacity of seminal plasma (SP) (Agarwal and Deepinder, 2009). However, in clinical practice, neither ROS nor SP antioxidant capacity are usually tested (Agarwal et al., 2021a; 2021b). This may be because there is no consensus on appropriate tests and their clinically relevant cut off values, as well as an absence of standardization of laboratory techniques (Roychoudhury et al., 2016; Agarwal et al., 2021a, 2021b).

Considering the available information, we hypothesized that the analysis of sperm metabolic status and mitochondrial ROS production could provide additional information to complement routine semen evaluation. To prove our hypothesis, we analyzed sperm mitochondrial function using high-resolution respirometry (HRR) in the context of the routine semen analysis. Also, we standardized an assay to measure sperm H_2O_2 production and the antioxidant capacity of SP. We found some cut off values of mitochondrial function and H_2O_2 production that reflect the reference values of semen parameters established by World Health Organization (WHO). These tests could eventually be integrated into the andrology clinic after proper validation.

Material and methods

Reagents and media

Chemicals (unless otherwise indicated) were purchased from Sigma-Aldrich Chemical Co. (St. Louis, MO, United States).

Selection of subjects and ethical guidelines

For this study, men who presented to the Fertilib andrology clinic (Montevideo, Uruguay) for semen testing were recruited. Recruitment was twice weekly, from August 2018 to December 2021. Unless otherwise stated, samples for the different studies were randomly selected (see below).

Clinical examination of patients and diagnostic semen analysis were performed at the andrology clinic according to the methods of WHO (WHO, 2010). Samples were discarded if they had a white blood cell count $>0.5 \times 10^6/ml$ or leukocytospermia (WHO, 2010). Sperm cultures were negative for microorganisms. Men who had presented to the clinic for examination as sperm donors (e.g., semen donors for assisted reproduction procedures), that had genital tract infections, varicocele or control after vasectomy were excluded from the study. Not all men were tested for chromosomal, genetic or hormonal anomalies. None of these criteria constituted exclusion criteria.

A total of 339 men who met the inclusion criteria were finally enrolled in this study and randomly distributed as follows: 17 normozoospermic men were included in motility studies and ATP measurements only, 48 semen samples showing different semen parameters were selected for microscopic morphometric analysis. Between them, 5 normozoospermic healthy men who had conceived at least one child at the time of the study and 7 infertile patients were selected for electron microscopic analysis. Inclusion criteria for classifying a man as infertile were: A

clinical history of infertility diagnosed as idiopathic (with abnormal spermogram) and the absence of a female factor in the couple.

The remaining 274 samples were divided into two fractions to analyze HRR and sperm H_2O_2 production when the number of cells was sufficient. Ninety-five SP (considering a wide range of motility and morphology) of these samples were reserved for measuring their antioxidant capacity. The classification criteria for the samples are shown in [Supplementary Figure S1](#). This categorization of samples was independent of fertility status.

The Ethics Committee of the Facultad de Medicina de la Universidad de la República Montevideo, Uruguay approved the experimental protocol. Before sample collection, all participants signed an informed consent form. The laboratory personnel assured the anonymity of the participants without the involvement of the researchers.

Semen evaluation

Semen samples were obtained after 3 days of sexual abstinence by masturbation in special sterile containers. After liquefaction at room temperature for 30 min, semen volume, viability, pH, and normal morphology were analyzed according to the WHO guidelines.

Two sperm counting chambers CELL -VU[®] (Millennium Sciences, Inc., New York, United States) were loaded, and ten different fields per chamber were randomly examined using a Nikon microscope at 37°C. Concentration and motility parameters were analyzed using an SCA-Microoptics automated analyzer (CASA) (Barcelona, Spain) with default settings according to WHO criteria (WHO, 2010).

Preparation of the samples

Liquefied samples were centrifuged at 400 g for 10 min at room temperature to separate sperm from SP. If a subsequent washing step was included is described below. The SP was aliquoted and frozen at $-80^\circ C$. Sperm were suspended in either of the following media: Biggers Whitten Whittingham medium (BWW: 95 mM NaCl, 4.6 mM KCl, 1.7 mM $CaCl_2$, 1.2 mM KH_2PO_4 , 1.2 mM $MgSO_4$, 5.6 mM glucose, 0.27 mM sodium pyruvate, 20 mM acid-free HEPES, 25 mM $NaHCO_3$, 44 mM lactic acid and 0.3% BSA, pH 7.4) for motility, morphology and respiratory experiments (Koppers et al., 2008), HAM-F10 medium (126 mM NaCl, 3.8 mM KCl, 1.08 mM NaH_2PO_4 , 0.6 mM $MgSO_4 \cdot 7H_2O$, 0.3 mM $CaCl_2$, 6 mM glucose, 20 mM HEPES and 6 mM $NaHCO_3$, pH 7.4) for $[H_2O_2]$ measurement or mitochondrial respiration medium (MRM: 0.1% BSA, 5 mM KH_2PO_4 , 1 mM EGTA, 5 mM MOPS and 300 mM sucrose, pH 7.4) for motility studies and ATP analysis.

Motility studies on the modulation of glycolysis and mitochondrial respiration

Sperm cells (35×10^6) were suspended in 1,500 μL MRM and divided into seven aliquots. Aliquots were incubated at 37°C with: 1) 0.5% ethanol (OH), 2) 25 mM sodium oxamate (OXA) 3) 100 mM 2-deoxy-D-glucose (2DG), 4) 2.5 μM of antimycin A (AA), 5) 5 μM carbonil cyanide- p-(tri-fluoromethoxy) phenyl-hydrazine (FCCP), 6) 25 mM OXA and 2.5 μM AA, 7) 100 mM 2DG and 2.5 μM AA. After 30 min, motility was analyzed using CASA. Aliquots were then centrifuged at 500 g for 10 min. Pellets were resuspended in 500 μL BWW and incubated at 37°C for 180 min, and sperm motility was measured. This study was performed on 11 normozoospermic men.

ATP detection

ATP content was determined using a commercial kit (Cat #700410; Cayman Chemical, Ann Arbor, MI, United States). Spermatozoa (1×10^6) from 6 normozoospermic males were incubated at 37°C for 30 min in MRM with the same drugs used in the motility studies (OH, OXA, 2DG, AA, FCCP, OXA + AA, and 2DG + AA). The medium was removed by centrifugation (600 g for 10 min), and the sperm pellet was washed twice with PBS at 4°C . Spermatozoa were resuspended in 100 μL of ATP detection sample buffer (1X) at 4°C , homogenized by repeated pipetting, and stored at -20°C until use. On the day of measurement, samples were thawed, diluted 1:10 with ATP detection sample buffer (1X), and stored on ice. ATP detection standards were prepared and the assay was performed according to the manufacturer's instructions. The luminescence signal was recorded using a luminometer plate reader (Lumistar Galaxy, BMG, LabTech). Each measurement was performed twice.

Fluorescence evaluation of sperm mitochondrial morphology

Sperm cells from 36 sperm samples were incubated with 50 nM MitoTracker[®] Red CMXRos - M7512 - (Invitrogen, Waltham, Massachusetts, United States) for 30 min at 37°C in BWW and then spread on a glass slide. The slides were fixed in a mixed solution of 4% w/v paraformaldehyde in 0.1 M phosphate buffer (PB) for 30 min and washed three times in PBS. Sperm nuclei were counterstained with DAPI (4',6-diamidino-2'-phenylindole dihydrochloride). Slides were mounted and observed using a Nikon Eclipse E400 epifluorescent microscope with a 100X, 1.4 NA oil objective (excitation: $\lambda = 488$ nm and $\lambda = 543$ nm). Digital images of 50–80 spermatozoa from each individual were acquired and processed. Manual segmentation of sperm intermediate pieces was performed

from the MitoTracker channel images using ImageJ/FIJI (Schindelin et al., 2012). Areas of interest (ROI) were defined semi-automatically. Only isolated and well-defined midsections were included in the analysis (Figure 2A). Width, length, and circumference were automatically calculated for each ROI. The mean \pm standard error (SE) was calculated for each sample.

Electron microscopy

Semen from 5 fertile control men and 7 infertile men was analyzed by transmission electron microscopy (TEM). After liquefaction, the semen samples were centrifuged at 400g, the supernatant was discarded, and the pellets were fixed in a mixed solution of 4% w/v paraformaldehyde in 0.1 M PB containing 2.5% v/v glutaraldehyde (pH 7.4). Each preparation was then rinsed in PB (pH 7.4), post-fixed in 1% osmium tetroxide (w/v) for 1 h, dehydrated, and embedded in Araldite resin. After polymerization at 58 – 60°C for 48 h, sections were made on an RMC MT -X ultramicrotome using a DIATOME diamond knife. Semi-thin sections were prepared, stained with toluidine blue 1% w/v and examined under a Nikon ECLIPSE E200 light microscope. Adjacent ultrathin sections (50–70 nm) were stained with uranyl acetate followed by lead citrate and examined using a JEOL JEM-1010 transmission electron microscope at 80 kV accelerating voltage. Images were captured with a Hamamatsu C-4742-95 digital camera and processed with Photoimpact[®] (Skowronek et al., 2012).

Evaluation of sperm respiration control ratio by high-resolution respirometry

We analyzed mitochondrial function of spermatozoa from 171 men as previously described (Cassina et al., 2015). Oxygen consumption rate (OCR) of 30×10^6 sperm resuspended in BWW was measured by high-resolution respirometry. HRR integrates highly sensitive oxygraphs (Oxygraph-2 K; Oroboros Instruments GmbH, Innsbruck, Austria) with software (DatLab, version 4.2; Oroboros Instruments GmbH) that displays respiration in terms of oxygen flux ($\text{pmol O}_2/1 \times 10^6$ cells/sec). For all experiments, the stirrer speed was set to 750 rpm and the temperature was set to 37°C . Basal respiration was measured for 5–10 min before adding 2 $\mu\text{g}/\text{ml}$ oligomycin, an ATP synthetase inhibitor. Maximal respiration was achieved by subsequent stepwise addition of the uncoupling agent 0.1–1 μM FCCP. Finally, a complex III inhibitor, 2.5 μM AA, was added to distinguish mitochondrial from residual oxygen consumption (non-mitochondrial respiration). Three indices are described by HRR: Coupling efficiency, spare respiratory capacity, and respiratory control ratio (RCR). We calculated: coupling efficiency (ratio between respiration associated with ATP synthesis and basal respiration), spare

respiratory capacity (ratio between maximal and basal respiration rates), and finally respiratory control ratio (RCR, the ratio between maximal and oligomycin-resistant respiration rates) (Brand and Nicholls, 2011; Ferreira et al., 2021).

Evaluation of sperm of hydrogen peroxide production

Hydrogen peroxide was measured using 10-acetyl-3,7-dihydroxyphenoxazine (Amplex Red). Amplex Red reacts in the presence horseradish peroxidase (HRP) with H_2O_2 in a 1:1 (v:v) stoichiometry to produce a highly red-fluorescent oxidation product, resorufin (Zhou et al., 1997; Messner and Imlay, 2002; González-Perilli et al., 2013). Amplex Red was dissolved in dimethyl sulfoxide (DMSO) to give a concentration of 1.25 mg/ml. This stock was frozen in aliquots and stored at $-70^\circ C$ for several months. A 0.8 ml aliquot of the stock was mixed with 18 ml of 50 mM potassium phosphate, pH 7.4, and kept shielded from light; this preparation is good for several hours (Messner and Imlay, 2002).

During standardization of the method a time-lapse analysis with and without 2.5 μM AA was done during 50 min (Figure 3A). Preliminary experiments were performed to determine the proper amount of human sperm cells and incubation time for H_2O_2 determination (data not shown). Sperm from samples of 136 males were washed with PBS by centrifugation at 400 g and re-suspended in HAM-F10. Between 2 and 6 $\times 10^6$ spermatozoa in HAM-F10 were placed in 96-well Nunc F plates in a final volume of 100 μL and exposed to HRP 8 $\mu g/ml$ and Amplex Red (Invitrogen, Waltham, Massachusetts, United States) 50 μM . The H_2O_2 present in the sample was compared to a calibration curve of H_2O_2 (final concentration 0.03–8 μM). The measurements were performed for 30 min at 37°C in a Flash Spectral Scanning Multimode Reader (Varioskan, Thermo Fisher Scientific, MA United States) at $\lambda_{ex} = 530\text{ nm}$ and $\lambda_{em} = 590\text{ nm}$. Duplicates were performed in samples and triplicates to perform the standard curve.

Evaluation of the antioxidant status of SP

The antioxidant capacity of SP from 95 men was determined by ferric-xylenol orange assay (FOX: 100 μM xylenol orange, 250 μM Fe^{2+} , 4 mM BHT, 25 mM H_2SO_4 , and 90% (v/v) methanol) (Jiang et al., 1990; Reyes et al., 2011) following the H_2O_2 consumption after 30 min (Gay and Gebicki, 2002). H_2O_2 oxidizes ferrous ions to ferric ions. To measure the ferric ions formed, we mixed 35 μL of plasma in a final volume of 1 ml of 50 mM phosphate-sodium buffer, pH 7.4, containing 100 μM H_2O_2 . Aliquots of 100 μL were taken from the reaction tube and mixed with 900 μL of FOX at time points 0 and 30 min. All tubes were centrifuged at 2000 g for 5 min to remove all residual

precipitate. H_2O_2 consumption was monitored by tracking the changes in absorbance at 560 nm at 25°C using a UV-Visible spectrophotometer UV-2450, Shimadzu. The H_2O_2 extinction coefficient was determined as 53.900 $M^{-1}cm^{-1}$. To determine the final concentration of H_2O_2 , a standard curve of $[H_2O_2]$ (concentration 5–200 μM) was included in the assay. At least three independent measurements were performed for each sample. Proteins in SP were quantified using the Bradford method (Bradford, 1976). Note that the less residual hydrogen peroxide measured, the more antioxidant capacity SP has.

Statistics

Statistical analysis was performed based on the GraphPad Prism statistical package version 8.0.1 for Windows, GraphPad Software, San Diego, California United States, www.graphpad.com, and the statistical software JASP Team (2020), JASP (version 0.140). Data were expressed by arithmetic means, the corresponding standard errors, medians, and the 25th and 75th percentiles. Normal distribution of the data was tested using the Shapiro-Wilk normality test, which revealed that most sperm parameter values were not normally distributed. The Pearson test or Spearman correlation test was used to determine the relationship between the parameters and mitochondrial measurements. Comparisons between means were made using either the ANOVA test (multiple groups) or Student's t test or Mann-Whitney test as a function of the normal distribution of the data (two groups). Receiver operating characteristic curves (ROC) were used to show the ability of mitochondrial function, $[H_2O_2]$ and/or antioxidants to discriminate between samples with progressive motility \geq vs. $<$ 32%, normal sperm morphology \geq vs. $<$ 4% or normal vs. abnormal spermiogram. Finally, cut off values were chosen to maximize the sum of sensitivity and specificity. Hypotheses were contrasted with two tails, and a p -value of less than 0.05 was considered statistically significant. For the experiments to determine the cut offs, the sample size was calculated with a confidence interval (CI) of 95%, a margin error of 5 and 10% of the population.

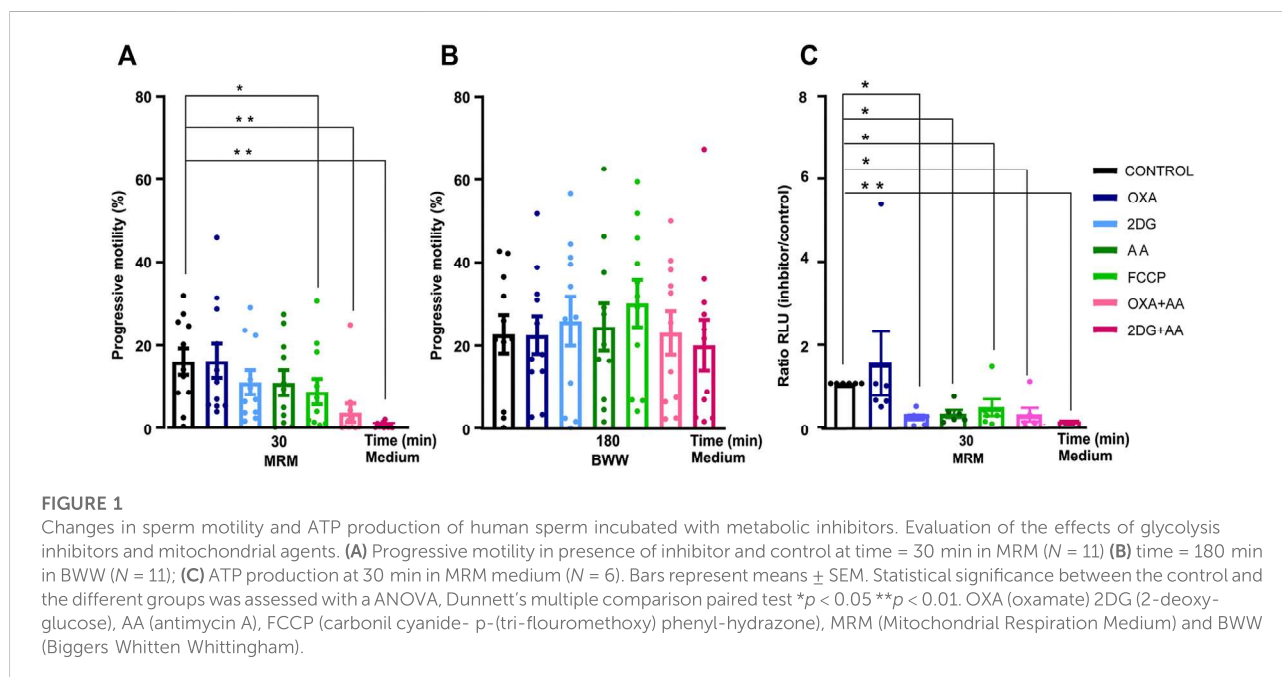
Results

Studied population

A total of 339 men aged 18–63 years were included in the study. The mean, standard deviation (SD), median, maximum and minimum values of the six main semen analysis parameters are listed in Table 1. These include sperm concentration, ejaculate volume, sperm viability, round cell concentration, percentage of normal morphology, and progressive motility. Experiments were performed in a total of 206 normozoospermic men and 133 men with abnormal

TABLE 1 Descriptive characteristics of participants' sperm parameters. Data were obtained by analyzing the first spermogram of 339 individuals who attended the andrology clinic. Max = maximum value. Min = minimum value *lower reference values (WHO, 2010).

Parameter	Mean	SD	Median	Max	Min	*Lower reference limit
Patient age (yr)	34.9	7.3	35.0	63.0	18.0	—
Volume (ml)	3.6	1.5	3.5	10.0	0.5	1.5
Sperm concentration (million/mL)	47.7	38.0	40.6	214.0	0.04	15
Sperm viability (%)	86.5	11.7	89.0	99.0	3.0	58
Normal sperm morphology (%)	7.7	4.3	7.0	28.0	0.0	4
Progressive motility (a+b) (%)	54.4	17.2	58.0	90.0	3.0	32
Round cells (million/ml)	0.7	2.0	0.2	3.0	0.001	1



semen parameters (17 asthenozoospermic, 19 teratozoospermic, 30 oligozoospermic, 10 oligo-asthenozoospermic, 8 terato-asthenozoospermic, 17 oligo-terato-asthenozoospermic, and 32 oligo-teratozoospermic males) (Kruger et al., 1988; WHO, 2010) (Supplementary Figure S1).

Changes in mitochondrial function are related to human sperm motility and morphology

Since the role of mitochondria in human sperm function has not been fully elucidated (Ruiz-Pesini and Epez 2000; Marchetti et al., 2002; Miki et al., 2004; Gallon et al., 2006; Ruiz-Pesini et al., 2007; Ferramosca et al., 2008; Koppers et al.,

2008; Nascimento et al., 2008; Ferramosca et al., 2012; Sousa et al., 2011; Goodson et al., 2012; Piomboni et al., 2012; Marques et al., 2014; Moscatelli et al., 2017; Ammar et al., 2020; reviewed in: Amaral et al., 2013; Boguenet et al., 2021; Castellini et al., 2021), we first analyzed the role of the glycolytic and oxidative phosphorylation system (OXPHOS) in sperm motility and ATP production, as well as mitochondrial morphology of sperm.

First, we incubated spermatozoa from normozoospermic men in medium without nutrients (MRM) and added either glycolytic or mitochondrial function inhibitors. We used drugs that act at different levels of cellular metabolism: 2DG inhibits glycolysis by competing with endogenous glucose, OXA is an analog of pyruvate and inhibits the production of lactate, whereas FCCP is a respiratory chain uncoupler from the OXPHOS, and AA inhibits the mitochondrial complex III. Neither OXA nor

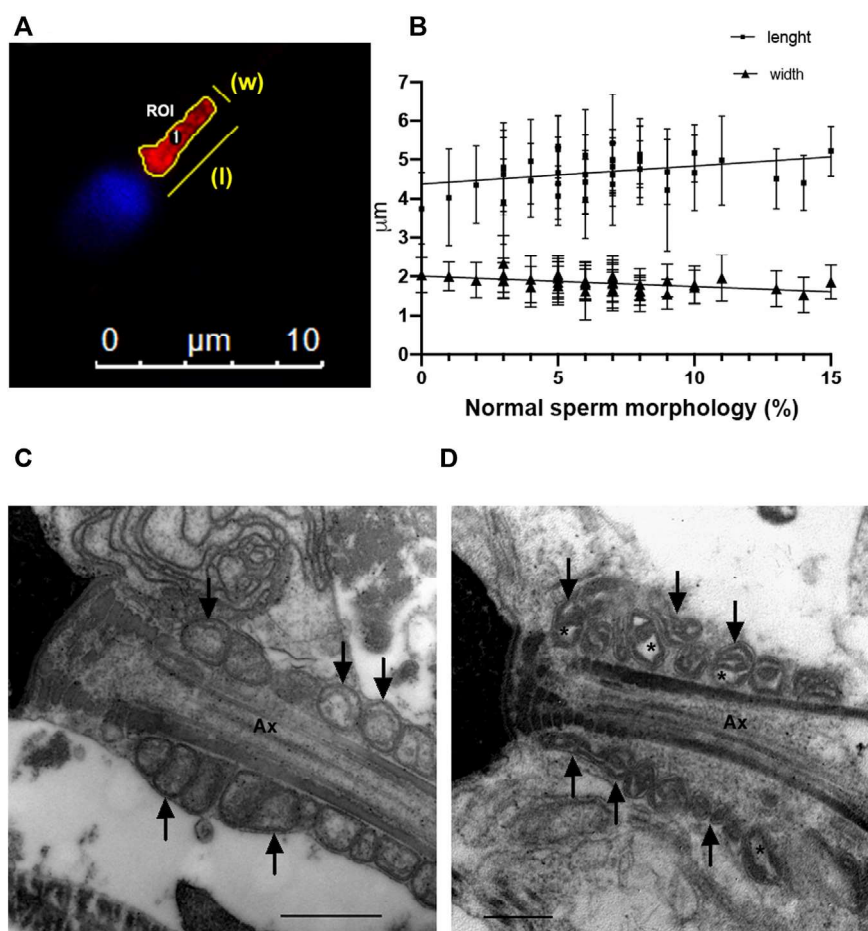


FIGURE 2

Sperm morphology analysis (A) Epifluorescence microscopy of the mid-piece of a human sperm cell. Manual segmentation of sperm mid-pieces using ImageJ/FIJI; (B) Correlation between mid-piece length and width and normal sperm morphology ($N = 36$). (C) Electron microscopy of sperm from a normozoospermic fertile man. (D) Electron microscopy of sperm from an infertile man with abnormal semen parameters. Defects on mitochondria are shown with arrows and asterisks indicate alterations in mitochondrial membranes. Ax = axoneme. Bars: 500 nm.

2DG nor AA significantly modified sperm motility. The sperm motility decreased significantly when the mitochondrial function was challenged by FCCP (Figure 1A). The combination of AA (mitochondrial inhibitor) and OXA or 2DG (glycolytic inhibitors) were required to completely decrease sperm motility. To test sperm viability, we washed sperm and incubated them in medium containing substrates (glucose, lactate, and pyruvate) for 3 h. Under these conditions, recovery of sperm motility was complete in all groups studied. (Figure 1B).

Second, we examined sperm ATP production under the same conditions as in the motility experiments. Sperm ATP production decreased under all the different conditions except when we added OXA (Figure 1C).

Finally, sperm mid-piece and mitochondrial morphology were analyzed (Figure 2). The sperm mid-piece was labeled with a red fluorescent dye that stains mitochondria

(Figure 2A). Mid-piece length was positively correlated (Pearson correlation) with the percentage of normal morphology sperm in the semen samples ($r = 0.37$, $p = 0.02$), while mid-piece width had a negative correlation with normal progressive motility (graph not shown) and morphology parameters (Figure 2B) ($r = -0.56$ $p = 0.0004$ and $r = -0.57$ $p = 0.0013$, respectively).

In addition, we examined sperm mitochondria using electron microscopy (Figures 2C,D). We observed that in spermatozoa from samples with a percentage of normal spermatozoa $<4\%$, the sperm mitochondria had abnormal shapes with dilatation of the inner mitochondrial matrix (asterisks in a representative image in Figure 2D).

Overall, these results indicate that sperm motility in normozoospermic males depends on mitochondrial function and that spermatozoa can maintain motility through the mitochondrial pathway. On the other hand, in men with

TABLE 2 Correlation between sperm parameters and mitochondrial indices. Coupling efficiency = ATP turnover/basal respiration. Spare respiratory capacity = maximal respiration rate/basal respiration. RCR = maximal respiration in the presence of FCCP/respiration in the presence of oligomycin, N = number of donors. Statistical analysis was evaluated using Spearman's test * $p < 0.05$, ** $p < 0.01$, *** $p < 0.001$.

Parameter	Progressive motility (%)			Normal sperm morphology (%)		
	N	Spearman's r	p -value	N	Spearman's r	p -value
Coupling efficiency	166	0.239	0.002**	144	0.146	0.08
Spare respiratory capacity	166	0.174	0.025*	144	0.050	0.540
RCR	171	0.303	<0.001***	147	0.276	<0.001***

altered seminal quality, the mid-piece and the mitochondria also showed abnormalities.

The mitochondrial function of spermatozoa correlates with the sperm parameters of the classical spermogram

Next, we decided to investigate whether mitochondrial function could be used as an index of sperm health. We measured the OCR of intact spermatozoa in real time, before and after the addition of inhibitors and FCCP.

We examined 171 sperm samples with HRR and analyzed the results in the context of the classical spermogram (Tables 2, 3). We obtained three indices representing mitochondrial function and dysfunction (Cassina et al., 2015; Ferreira et al., 2021). Respiratory indices are ratios of oxygen consumption. They represent proportions of two rates so they are internally normalized to cell number or protein mass (Brand and Nicholls, 2011). RCR correlated positively with progressive motility and the percentage of normal sperm morphology in semen samples (Table 2). Similarly, the coupling efficiency and the spare respiratory capacity correlated positively with the percentage of sperm that exhibited progressive motility. Coupling efficiency and spare respiratory capacity did not correlate with the percentage of normal sperm morphology. We also divided the three main indices into two groups according to the sperm parameters (WHO's reference values) (Table 3). Only RCR showed statistically significant differences between samples in which both the percentage of motility and morphology were below or above the reference values. Mean \pm S.D of RCR of samples with progressive sperm motility $\geq 32\%$ were statistically higher than those with less than 32% (5.7 ± 6.8 , $n = 155$, vs. 2.4 ± 0.9 , $N = 16$, $p < 0.001$). Sperm from males with a percentage of normal morphology $\geq 4\%$ have a higher RCR than those with abnormal sperm morphology $< 4\%$ (5.4 ± 5.3 , $N = 150$ vs. 3.7 ± 4.2 , $N = 11$, mean \pm SD, $p = 0.03$). Unexpectedly, and although viability correlated to RCR ($r = 0.1754$, $p = 0.0266$, Spearman correlation, graph not shown), we did not see

statistically significant differences between samples in which the percentage of viable cells were below or above 58% (WHO's reference value). Also, there were no differences when the indices were analyzed using the reference values for the other semen parameters analyzed (volume or concentration) (data not shown).

These results show that mitochondrial function is correlated with semen parameters. Moreover, RCR is the best index to discriminate between samples with normal and abnormal semen parameters.

The percentage of sperm with progressive motility and normal sperm morphology correlates negatively with hydrogen peroxide production

First, we detected extracellular [H_2O_2] produced by sperm. For this purpose, we measured the reaction between Amplex red and H_2O_2 in the presence of HRP (Richer and Ford, 2001; Bamber et al., 2002; Yáñez-Ortiz et al., 2021).

Upon addition of AA, an increase in H_2O_2 production is observed compared with baseline, suggesting that mitochondria may be a source of H_2O_2 in sperm cells as previously shown (Figure 3A) (Koppers et al., 2008; Storey, 2008; Aitken et al., 2012b; Escada-Rebello et al., 2020).

Subsequently, 136 sperm samples with different sperm parameters were analyzed. The H_2O_2 production per million spermatozoa correlated negatively with sperm concentration ($r = 0.32$, $p < 0.001$, Spearman correlation), percentage of spermatozoa with progressive motility, and percentage of normal sperm morphology (Table 4).

There were no statistical differences between the [H_2O_2] produced by samples with progressive motility \geq or $< 32\%$ ($0.75 \pm 0.19 \mu M/10^6$ spermatozoa and $1.53 \pm 0.92 \mu M/10^6$ spermatozoa, respectively, mean \pm SEM, Figure 3B). The [H_2O_2] value was significantly higher in the samples with percentage of normal sperm morphology less than 4% (Figure 3C). The mean \pm SEM of samples with more than

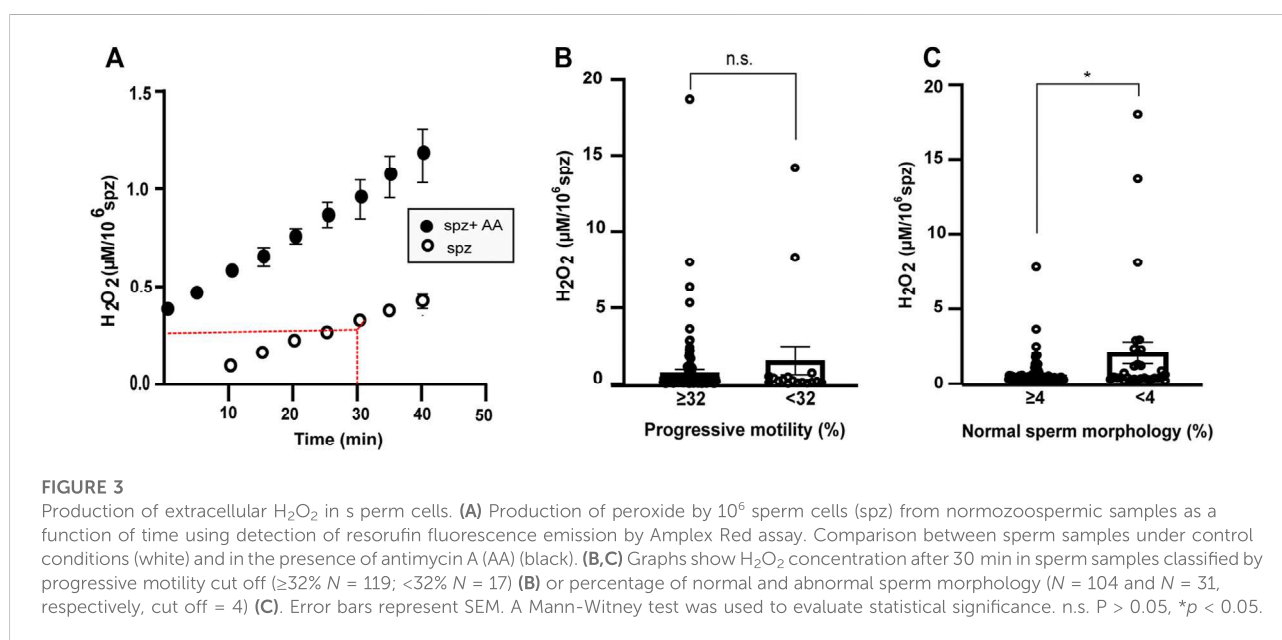
TABLE 3 Main respiratory indices classified by sperm parameters. RCR = respiratory control ratio SD = standard deviation. Max = maximum. Min = minimum. Statistic analysis, Man Whitney test. * $p < 0.05$, *** $p < 0.001$.

Progressive motility

Indices	Mean		<i>p</i> -value	SD		Median		Max		Min	
	≥32%	<32%		≥32%	<32%	≥32%	<32%	≥32%	<32%	≥32%	<32%
Coupling efficiency	0.510	0.442	0.684	0.187	0.161	0.504	0.412	0.955	0.800	0.045	0.200
Spare respiratory capacity	1.982	1.695	0.126	0.807	0.6866	1.788	1.610	6.570	3.267	0.521	0.635
RCR	5.658	2.400	<0.001***	6.796	0.914	3.550	2.124	57.231	4.19	0.744	0.857

Normal sperm morphology

Indices	Mean		<i>p</i> -value	SD		Median		Max		Min	
	≥ 4%	<4%		≥ 4%	<4%	≥ 4%	<4%	≥ 4%	<4%	≥ 4%	<4%
Coupling efficiency	0.503	0.497	0.710	0.186	0.170	0.498	0.451	0.955	0.800	0.045	0.288
Spare respiratory capacity	1.992	1.694	0.350	0.826	0.552	1.814	1.726	6.570	2.413	0.521	0.635
RCR	5.434	3.746	0.032*	5.354	4.208	3.610	2.529	31.825	16.132	0.744	1.108



4% normal morphology was $0.42 \pm 0.10 \mu M/10^6$ spermatozoa and $1.96 \pm 0.76 \mu M/10^6$ spermatozoa in samples with morphology $< 4\%$ (Figure 3C). There were no statistical differences in the other parameters analyzed.

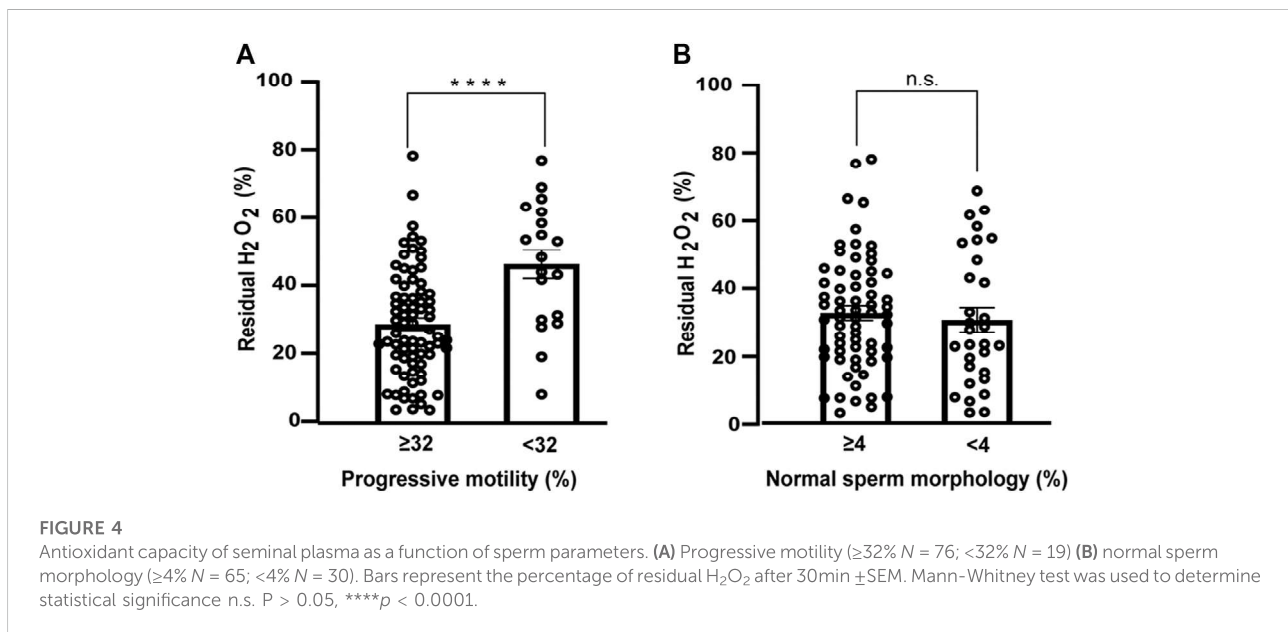
Thus, measuring extracellular $[H_2O_2]$ correlates with main semen parameters. The method discriminates between men with percentage of normal sperm morphology $\geq 4\%$ and $< 4\%$ in their spermogram using strict criteria (Kruger et al., 1988).

Seminal plasma antioxidant status correlates with sperm motility

To analyze whether the negative correlation of the production of $[H_2O_2]$ with sperm parameters could be a consequence of variations in the antioxidant capacity of SP, we examined the percentage of residual H_2O_2 after addition of SP.

TABLE 4 Correlation between semen parameters and [H₂O₂] or percentage of residual hydrogen peroxide (antioxidant capacity). Spearman's test was used. * $p < 0.05$, ** $p < 0.01$, *** $p < 0.001$. N = number of samples. #percentage of sperm normal morphology.

	[H ₂ O ₂] per million sperm ($\mu\text{M}/10^6$ sperm)			Residual hydrogen peroxide (%)		
	N	Spearman's r	p-value	N	Spearman's r	p-value
Progressive motility (%)	136	-0.175	0.042*	95	-0.342	<0.001***
Sperm morphology [#]	128	-0.261	0.003**	95	0.014	0.890
[H ₂ O ₂] per million sperm(μM)	—	—	—	45	0.080	0.500



The antioxidant capacity of SP correlated with sperm motility and was higher in samples with progressive motility $\geq 32\%$ (Table 4 and Figure 4A). The mean \pm SEM of the antioxidant capacity of SP was $28.6 \pm 1.8\%$ in men with progressive sperm motility $\geq 32\%$ and $46.2 \pm 4.2\%$ in men presenting $< 32\%$ $p < 0.00001$ (Mann Whitney test). The antioxidant status of SP did not correlate with the percentage of normal sperm morphology of the samples (Table 4 and Figure 4B). The means \pm SEM were $32.7 \pm 2.1\%$ and $30.7 \pm 3.6\%$ when we analyzed SP of samples with normal sperm morphology of more and less than 4%, respectively ($p = 0.4$, t -test). The [H₂O₂] produced by the same sample did not correlate with the percentage of residual peroxide (Table 4). There were no differences when the indices were analyzed against the reference values for the other sperm parameters (data not shown).

These results suggest that the antioxidant capacity of SP has a strong correlation with progressive sperm motility. Samples with higher motility have higher antioxidant

capacity, which is reflected in a lower percentage of residual peroxide. FOX method can distinguish between normal and abnormal sperm motility.

RCR is a good indicator of the functional status of human sperm

The diagnostic ability of the previous indices as binary classifiers was determined using the ROC curves. The results were classified into two groups (using reference values of 32 and 4% for sperm motility and morphology, respectively) (Figures 5A,B; Table 3). The ROC curve showed good specificity and sensitivity in the case of RCR (Figures 5C,D). As for motility, the area under the curve (AUC) corresponded to 0.773 (95% CI between 0.672–0.873, $p < 0.001$). An RCR cut off point of 2.93 was established with a sensitivity of 75% and a specificity of 69% (Figures 5A,C). In the case of morphology, the AUC corresponded to 0.692

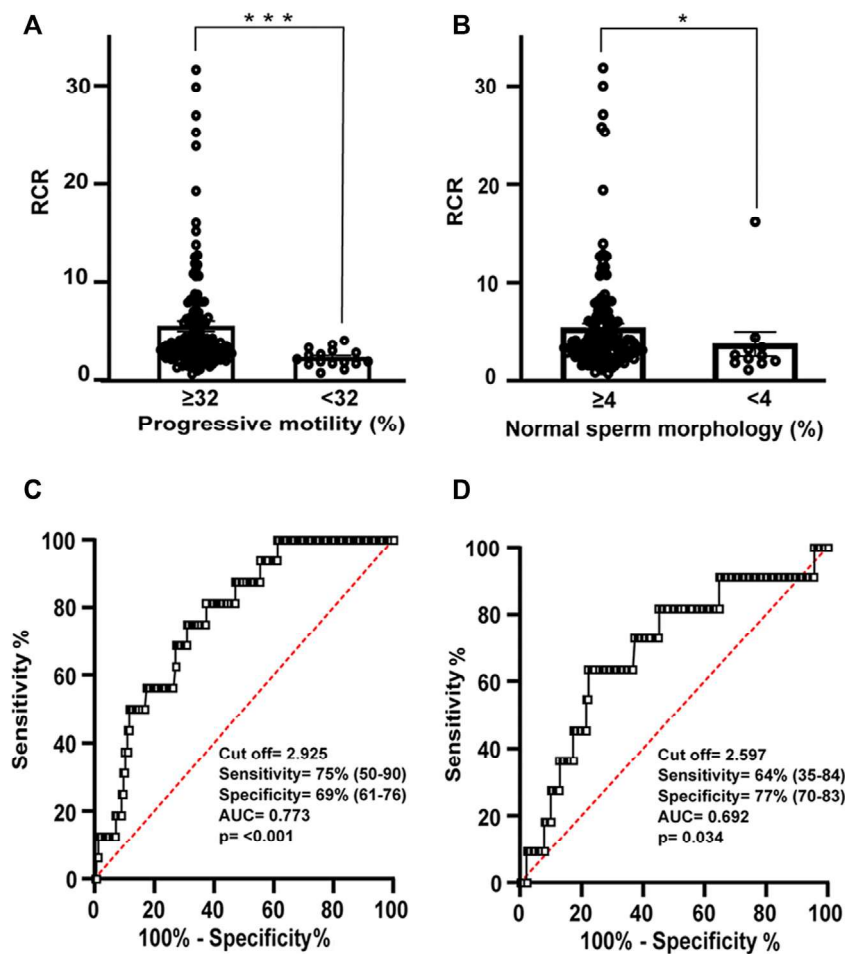


FIGURE 5

Relation between RCR, motility and morphology spermogram parameters. Bars represent means \pm SEM of (A) progressive motility ($\geq 32\%$ $N = 155$; $< 32\%$ $N = 16$) and (B) normal sperm morphology ($\geq 4\%$ $N = 150$; $< 4\%$ $N = 11$). Mann-Whitney test was used to determine statistical significance; $*p < 0.05$, $***p < 0.001$. (C) Receiver operating characteristic (ROC) curve showing RCR cut off value, sensitivity (%), specificity (%), and area under the curve for samples with normal or abnormal percentage of progressive motility and (D) ROC curve showing RCR cut off value, sensitivity (%), specificity (%), and area under the curve for samples with normal or abnormal percentage of spermatozoa with normal morphology.

(95% CI between 0.524–0.860, $p = 0.034$) (Figures 5B,D). A cut off point of RCR of 2.60 was set with a sensitivity of 64% and a specificity of 77%.

A ROC curve (AUC = 0.651, 95% CI between 0.530–0.772, $p = 0.012$) determined 0.197 μM $[\text{H}_2\text{O}_2]/10^6$ spermatozoa as the cut off value with 71% sensitivity and 61% specificity when samples were classified using reference values of normal sperm $\geq 4\%$ in their spermogram (Figure 3C; Supplementary Figure S2). However, it was not possible to establish a cut off value of the $[\text{H}_2\text{O}_2]$ when the reference value of the spermogram was $\geq 32\%$ of progressive motile sperm (Figure 3B).

In the case of residual hydrogen peroxide, a cut off value of 41% was set only when reference value for motility were applied. The ROC curve has an AUC = 0.765 (95% CI

between 0.539–0.892, $p < 0.001$) with 68% specificity and 79% sensitivity (Figure 4A; Supplementary Figure S3).

Thus, we were able to establish cut offs for the three different assays with respect to the classic spermogram.

RCR and H_2O_2 production can distinguish between normal and abnormal samples

Finally, to establish reference values encompassing all sperm parameters, we divided the male population into normozoospermic males and those with at least one abnormal sperm parameter (include: teratozoospermic, asthenozoospermic, oligozoospermic, terato-asthenozoospermic, and oligoasthenoteratozoospermic men).

The cut off value for RCR determined from the ROC curve (AUC = 0.695, 95% CI: 0.5792–0.810, $p = 0.003$) was 3.15 (sensitivity and specificity 73 and 61%, respectively) (Figures 6A,C).

The ROC curve (AUC = 0.610, 95% CI between 0.512–0.719, $p = 0.044$) determined a cut off value of $[H_2O_2] = 0.198 \mu M/10^6$ spermatozoa (sensitivity of 65% and specificity of 60%) between both groups (Figures 6B,D).

When the population was divided into normozoospermic and abnormal spermograms, no cut off value was determined for the percentage of residual hydrogen peroxide.

Therefore, RCR and $[H_2O_2]$ are good methods for classifying semen samples with normal or abnormal spermograms.

Discussion

The source of ATP production for mammalian sperm motility has been widely studied (Miki et al., 2004; Mukai and Okuno, 2004; Miki, 2007; Ruiz-Pesini et al., 2007; Ferramosca et al., 2008, 2012; Goodson et al., 2012; Mukai and Travis, 2012; Piomboni et al., 2012; Moscatelli et al., 2017). The question of whether glycolysis or OXPHOS is the main source of ATP for sperm motility is controversial and considered species-specific (Storey, 2008; Amaral et al., 2013; Castellini et al., 2021; Kumar, 2022). By inhibiting the glycolytic pathway and mitochondrial function, we were able to confirm that energy supply (ATP) formed at the mitochondrial level is important for sperm motility in semen samples with normal parameters. Furthermore, we

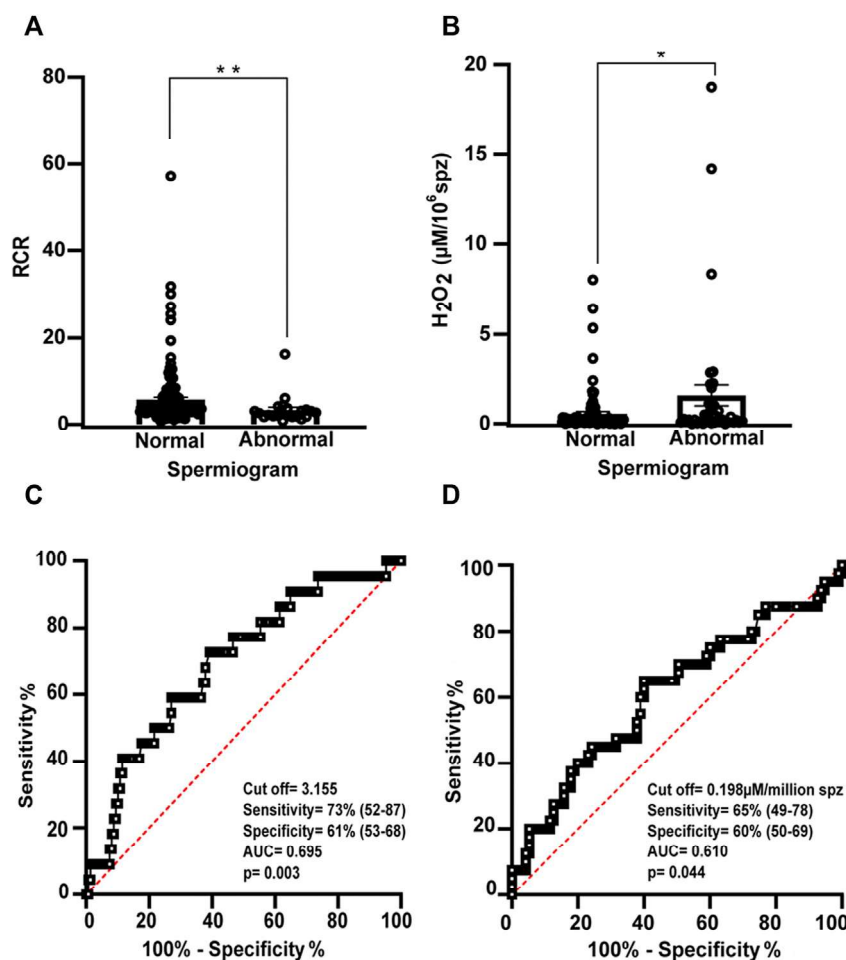


FIGURE 6

Relation between RCR and hydrogen peroxide concentration and spermogram parameters. Bars represent the mean values of (A) RCR (normal $N = 148$; abnormal $N = 23$) and (B) extracellular H_2O_2 concentration (normal $N = 95$; abnormal $N = 40$) \pm SEM. A Mann-Witney test was used to evaluate statistical significance. * $p < 0.05$, ** $p < 0.01$ (C) Receiver operating characteristic (ROC) curve showing RCR cut off value, sensitivity (%), specificity (%), and area under the curve for normal and abnormal spermogram and (D) (ROC) curve showing $[H_2O_2]$ cut off value (μM /million sperm), sensitivity (%), specificity (%), and area under the curve for abnormal and normal spermogram.

observed that motility and morphological alterations detected in routine semen analysis correlated with morphological changes in the mid-piece (Figure 2). Both observations make it reasonable to study mitochondrial sperm function in men with altered sperm parameters.

Our findings are consistent with some previous data emphasizing the role of OXPHOS as an essential ATP source for sperm function in humans and mice (Ruiz-Pesini et al., 1998; Ferramosca et al., 2008; Stendardi et al., 2011; Ferramosca et al., 2012; Piomboni et al., 2012; Ferramosca and Zara, 2014; Cassina et al., 2015; Moscatelli et al., 2017; Marín-Briggiler et al., 2021). Overall, it is now conceivable that both glycolysis and OXPHOS contribute to ATP production and depend on each other in controlling sperm functions reliant on the differential availability of energetic substrates in the environment (Castellini et al., 2021). There are also data from proteomic studies highlighting the contribution of lipid β -oxidation as a sperm metabolic pathway (Amaral et al., 2013), suggesting that sperm metabolism is complex and needs further analysis.

We have previously shown that markers of mitochondrial function and dysfunction (such as RCR) reflect sperm activity (Cassina et al., 2015) and that they are associated with the cell's ability to fertilize (Ferreira et al., 2021). The data presented here highlight the differences in mitochondrial function in men with different sperm parameters. We propose that assessment of mitochondrial function is useful to provide information on sperm metabolic status in men.

Several analyzes have associated semen parameters with mitochondrial function (Marchetti et al., 2002; Gallon et al., 2006; Amaral and Ramalho-Santos, 2010; Uribe et al., 2017; Durairajanayagam et al., 2021; Tanga et al., 2021). However, the evaluation of sperm mitochondrial activity is not usually part of human sperm testing studies. Oximetry and HRR in particular, have the advantage over other mitochondrial analyzes in that they can examine motile (live) and intact (non-permeabilized) spermatozoa (Cassina et al., 2015; Ferreira et al., 2021). In particular, RCR has high sensitivity to all points of mitochondrial function, so most of them can be analyzed in the same experiment, e.g., respiratory chain, mitochondrial membrane potential, and respiratory reserve capacity. It has the disadvantage of requiring expensive equipment and specialized personnel. Although the sensitivity of the equipment is very high, our team has determined that at least 12 million/ml of sperm are required to detect variations in oxygen consumption. We are aware that this low limit is not only a drawback of the method, but also a limitation of this study because we could not measure sperm from some oligozoospermic males. Other authors have used HRR to analyze sperm metabolism, looking for either changes in mitochondrial function under different experimental conditions (Cedikova et al., 2014; Hereng et al., 2014; Le Foll et al., 2021) or differences between sperm from normozoospermic and asthenozoospermic men (Cedikova

et al., 2014; Cedíková et al., 2014) suggesting that this tool has potential applications.

Sperm oxygen consumption has been successfully measured using similar sensitive methods (e.g., Seahorse flux analyzer) (Tourmente et al., 2015; Balbach et al., 2020a, 2020b). These studies have demonstrated the importance of mitochondrial oxygen consumption in sperm capacitation in mice (Balbach et al., 2020b) and the differences between mitochondrial metabolism in several strains of mice (Tourmente et al., 2015). This last method has the advantage of analyzing extracellular acidification (ECAR) and oxygen consumption rates simultaneously. It can eventually be applied to a smaller number of cells. The disadvantage of Seahorse XF is that ECAR is based on measurements of extracellular pH near the plasma membrane, so these experiments exclude the use of HCO_3^- , which is required in some of the sperm media (Traba et al., 2016; Hidalgo et al., 2020). In the Seahorse flux analyzer, cells must adhere to the plates, potentially affecting metabolic functions. HRR has the property that cells can move freely, which is *a priori* an advantage in the case of sperm. Defects in sperm parameters are often directly related to high levels of ROS in the male reproductive tract and semen (Kumar et al., 2009; Agarwal et al., 2014b; Bonanno et al., 2016; Nowicka-Bauer and Nixon, 2020). Consistent with previous reports (Aitken et al., 2012b; Ammar et al., 2020), our data show an association between abnormal mitochondrial sperm morphology and altered sperm motility and morphology in subjects exhibiting multiple alterations in the spermiogram. In other cell types, mitochondrial structural changes have been reported as part of mitochondrial dynamics in response to ROS (Galloway et al., 2012; Martínez et al., 2019, 2020). In mature spermatozoa, mitochondria are arranged around flagella and form a thick mitochondrial sheath stabilized by di-sulfide bonds (Otani et al., 1988). This capsule-like structure provides mechanical stability, protection, and resistance to hypo-osmotic stress (Amaral et al., 2013). Therefore, sperm mitochondria are unlikely to undergo the same dynamic changes observed in other cell types. However, human sperm mitochondria exhibit a looser morphology during capacitation, likely due to an increase in mitochondrial volume (Vorup-Jensen et al., 1999). Capacitation is a functional change in sperm that prepares cells for fertilization (Austin, 1952) and requires small amounts (considered physiological) of ROS (de Lamirande et al., 1997). Whether increased ROS production can alter sperm mitochondrial morphology remains to be investigated.

All in all, these results argue in favor of studying mitochondrial analysis in parallel with the redox status of sperm and semen. Moreover, these results were also consistent with those of respirometry studies; when sperm parameters were abnormal, an increase in H_2O_2 was measured. In this study, we used a previously published assay (Richer and Ford, 2001; Baumber et al., 2002; Yáñez-Ortiz et al., 2021) to detect H_2O_2 production in sperm.

We observed a negative correlation between sperm parameters and H_2O_2 production. These results are consistent with those obtained by other methods, such as a correlation between ROS production and oligozoospermia (Agarwal et al., 2014a), asthenozoospermia (Bonanno et al., 2016), and teratozoospermia (Agarwal et al., 2014b). It has already been reported that defective spermatozoa produce higher amounts of ROS than normal ones (Aitken et al., 2012b), but an effect of H_2O_2 upstream on spermatogenesis that interferes with the final sperm production and reduces sperm concentration and/or sperm motility and morphology cannot be excluded.

Although the sensitivity and specificity of various tests measuring ROS have been published, they remain variable, are not standardized, and generally cannot provide diagnostic recommendations (Aitken et al., 2012a; Benjamin et al., 2012; Sharma et al., 2017; Agarwal et al., 2021a). In addition, many tests for ROS are expensive, time-consuming, often require specialized training, and are therefore not readily available in clinical and diagnostic laboratories (Alahmar, 2019; Agarwal et al., 2021a; 2021b). Extracellular hydrogen peroxide measurement by amplex red has the limitation of being an indirect assay. However, this approach has several advantages over other ROS assays. As $O_2^{\bullet-}$ does not cross membranes at physiological pH, measurement of hydrogen peroxide, which is the product of $O_2^{\bullet-}$ dismutation and diffuses through membranes, can then be used as an indicator of mitochondrial $O_2^{\bullet-}$ levels. Furthermore, peroxide is much more stable than $O_2^{\bullet-}$ and can accumulate in easily detectable amounts (Messner and Imlay, 2002; Wang et al., 2018). Our results showed an increase in the formation of hydrogen peroxide when AA (inhibitor of the III complex of the respiratory chain) was added, confirming that mitochondria are a source of ROS formation. An advantage of measuring hydrogen peroxide by this method is that it does not require specialized technicians or sophisticated equipment. It also represents mitochondrial superoxide production in sperm (Wang et al., 2018).

SP contains many enzymatic and non-enzymatic antioxidants, which are a source of sperm protection against oxidative stress (Khosrowbeygi and Zarghami, 2007; du Plessis et al., 2008). Therefore, it is clinically relevant to establish the reference values for measuring ROS in combination with antioxidant capacity in SP (Agarwal et al., 2015). Using a sensitive method that quantifies the amount of residual hydrogen peroxide, we were able to determine the antioxidant capacity of several SP samples. There are already several essays available for measuring antioxidant capacity (Zini et al., 2000; Agarwal and Prabakaran, 2005; Baker and Aitken, 2005; Agarwal et al., 2006; Khosrowbeygi and Zarghami, 2007; Agarwal et al., 2015; Sharma et al., 2017; Robert et al., 2020). The reason for including this particular method in our analysis is that we can directly relate the production of ROS (H_2O_2) to the antioxidant assay chosen (the percentage of decay of H_2O_2 when de SP is added). In our study, seminal antioxidant capacity correlated positively with sperm motility. This is consistent with previous studies indicating that antioxidant

capacity is reduced in asthenozoospermic men (Pahune et al., 2013; Madej et al., 2021). However, antioxidant capacity did not correlate with the percentage of normal sperm morphology. It is known that antioxidant capacity in SP is related to age, environmental pollution, lifestyle, chronic or genital (varicocele) diseases (Eroglu et al., 2014; Roychoudhury et al., 2016; Madej et al., 2021). The analysis of these factors was beyond the scope of our study, but some of them could explain the lack of correlation between the antioxidant capacity of SP and sperm morphological alterations in the spermogram.

The measurement of oxidants in combination with the antioxidant capacity of a sample could be important to integrate the redox status of semen (Agarwal and Bui, 2017; Agarwal and Wang, 2017). Unexpectedly, in this work, the production of H_2O_2 and the antioxidant capacity of SP were analyzed in 45 samples, but no correlation between $[H_2O_2]$ extracellular and the percentage of residual peroxide in SP of the same samples was found. We can speculate that either sperm ROS production is not related to the antioxidant capacity measured by this method, or that other factors may influence semen composition. Since environmental factors affect the antioxidant capacity of SP as suggested above, some of them may be studied in the future to test the latter hypothesis. Using a device that measures the relative proportions of oxidants to reductants (antioxidants) called Male Infertility Oxidative System (MiOXSYS) (Agarwal and Bui, 2017; Agarwal et al., 2021b), the oxidation-reduction potential (ORP) was determined. ORP correlated with sperm parameters and male fertility status (Agarwal et al., 2017), including data from a multicentric study (Agarwal et al., 2019). The technique is promising for the evaluation of sperm oxidative stress. The device is not yet available worldwide, but it will be an alternative for analysis of sperm samples in relation to sperm metabolism.

The present study was performed on samples that are not pure oligozoospermic, asthenozoospermic, or teratozoospermic. This is a limitation of the analysis, however, the main objective of this study was to establish cut off of mitochondrial function in parallel with spermogram results. In particular, measurement of sperm RCR and their production of ROS by quantification of $[H_2O_2]$ extracellular resulted in good indicators of sperm function and correlated with main semen parameters. Therefore, some reference values were determined. The data presented here show that RCR and $[H_2O_2]$ are good binary classifiers; a RCR cut off point of 3.2 was established with a sensitivity of 73% and a specificity of 61% using reference values of 32 and 4% for sperm motility and morphology, respectively. The cut off value for $[H_2O_2]$ was set at $0.2 \mu M$ per million sperm (sensitivity = 65%, specificity = 60%). In contrast, semen antioxidant capacity had not been demonstrated to be a good indicator for classifying semen samples with normal or abnormal spermograms.

In this work, we established the cut off based on sperm parameters independently of the cause of the fertility status; e.g., we did not include the presence of chromosomal, genetic, hormonal abnormalities or other previously known conditions related to male fertility in the analysis. It will be interesting to test whether the reference values described can distinguish between these conditions.

Men who attend fertility clinics seek fertility advice, but not all men with abnormal sperm parameters are infertile and vice versa (Guzick et al., 2001; Cairo Consensus Workshop Group, 2020; Pandravadā et al., 2021). Infertility with normal semen parameters is one of the new challenges in this field. As a result, fertility clinics are looking for new indices to determine the true fertility potential of sperm. In our study, ROC curves were generated to determine the cut off values, sensitivity, and specificity of the assays using the previous reference parameters. We are aware that a weakness of the study is that the categorization is not between fertile and infertile men. Further studies are planned to apply the indices in the IVF clinic, where the true fertility potential of sperm can be assessed. In addition, multicentric validation of the results must be performed before these tools can be used in clinical practice. Nevertheless, the application of the mitochondrial and H₂O₂ sperm production indices may contribute to the understanding of sperm biology and may be helpful in explaining some cases of infertility.

Conclusion

Semen evaluation is considered one of the most important laboratory tests for assessing male fertility. Although it is the gold standard method for studying infertile men, it still lacks functional analysis of sperm status. We propose that determination of RCR in combination with other analyzes (such as measurement of extracellular [H₂O₂] sperm production and antioxidant capacity of SP) provides results on sperm functional status focusing on energy metabolism, involvement of mitochondrial function, and formation of ROS.

Data availability statement

The raw data supporting the conclusion of this article will be made available by the authors, without undue reservation.

Ethics statement

The studies involving human participants were reviewed and approved by the Ethics Committee of the Facultad de Medicina de la Universidad de la República Montevideo, Uruguay. The patients/participants provided their written informed consent to participate in this study.

Author contributions

PI, LR-V, and PP-P performed the experiments including standardization of protocols, respiratory analysis, and CASA evaluation. MFS performed the morphological studies. PI,

AC, and RS designed the experiments, analyzed the results, and wrote the manuscript. All authors read, corrected, and approved the final manuscript.

Funding

AC is supported by grants from Universidad de la República (CSIC_2018, Espacio Interdisciplinario_2021). Additional funding was obtained from the Programa de Desarrollo de Ciencias Básicas (PEDECIBA, Uruguay). PI, MFS, and RS are supported from Universidad de la República (I+D, CSIC 2014; I+D, CSIC 2016, Iniciación a la Investigación, CSIC 2019 and FMV_1_2017_1_136490 ANII- Uruguay). PI is supported by POS_FMV_2018_1_1007814.

Acknowledgments

We thank Gabriela Casanova Facultad de Ciencias—UdelaR, Uruguay for her assistance with the MET experiments. Also, we are very grateful to Andres Trotchansky and Marcelo Reyes for their assistance in the FOX method (Facultad Medicina-Udelar, Uruguay). Finally, we would like to thank the Fertilab Andrology clinic, especially José María Montes and Andrea Torrents, for allowing us access to donors.

Conflict of interest

The authors declare that the research was conducted in the absence of any commercial or financial relationships that could be construed as a potential conflict of interest.

Publisher's note

All claims expressed in this article are solely those of the authors and do not necessarily represent those of their affiliated organizations, or those of the publisher, the editors and the reviewers. Any product that may be evaluated in this article, or claim that may be made by its manufacturer, is not guaranteed or endorsed by the publisher.

Supplementary material

The Supplementary Material for this article can be found online at: <https://www.frontiersin.org/articles/10.3389/fcell.2022.926684/full#supplementary-material>

References

- Agarwal, A., Ahmad, G., and Sharma, R. (2015). Reference values of reactive oxygen species in seminal ejaculates using chemiluminescence assay. *J. Assist. Reprod. Genet.* 32, 1721–1729. doi:10.1007/s10815-015-0584-1
- Agarwal, A., and Bui, A. D. (2017). Oxidation-reduction potential as a new marker for oxidative stress: Correlation to male infertility. *Investig. Clin. Urol.* 58, 385–399. doi:10.4111/icu.2017.58.6.385
- Agarwal, A., and Deepinder, F. (2009). “Determination of seminal oxidants (reactive oxygen species),” in *Infertility in the male.* in Editors C. S. Niederberger, L. I. Lipshultz, and S. S. Howards (Cambridge: Cambridge University Press), 618–632. doi:10.1017/CBO9780511635656.040
- Agarwal, A., Finelli, R., Selvam, M. K. P., Leisegang, K., Majzoub, A., Tadros, N., et al. (2021a). A global survey of reproductive specialists to determine the clinical utility of oxidative stress testing and antioxidant use in male infertility. *World J. Mens. Health* 39, 470–488. doi:10.5534/wjmh.210025
- Agarwal, A., Leisegang, K., Majzoub, A., Henkel, R., Finelli, R., Panner Selvam, M. K., et al. (2021b). Utility of antioxidants in the treatment of male infertility: clinical guidelines based on a systematic review and analysis of evidence. *World J. Mens. Health* 39, 233–290. doi:10.5534/wjmh.200196
- Agarwal, A., Mulgund, A., Sharma, R., and Sabanegh, E. (2014a). Mechanisms of oligozoospermia: an oxidative stress perspective. *Syst. Biol. Reprod. Med.* 60 (4), 206–216. doi:10.3109/19396368.2014.918675
- Agarwal, A., Panner Selvam, M., Arafa, M., Okada, H., Homa, S., Killen, A., et al. (2019). Multi-center evaluation of oxidation-reduction potential by the MiOXSYS in males with abnormal semen. *Asian J. Androl.* 21, 565–569. doi:10.4103/aja.aja_5_19
- Agarwal, A., Prabakaran, S., and Allamaneni, S. S. S. R. (2006). Relationship between oxidative stress, varicocele and infertility: a meta-analysis. *Reprod. Biomed. Online* 12, 630–633. doi:10.1016/S1472-6483(10)61190-X
- Agarwal, A., and Prabakaran, S. A. (2005). Mechanism, measurement, and prevention of oxidative stress in male reproductive physiology. *Indian J. Exp. Biol.* 43, 963–974.
- Agarwal, A., Roychoudhury, S., Sharma, R., Gupta, S., Majzoub, A., Sabanegh, E., et al. (2017). Diagnostic application of oxidation-reduction potential assay for measurement of oxidative stress: clinical utility in male factor infertility. *Reprod. Biomed. Online* 34, 48–57. doi:10.1016/j.rbmo.2016.10.008
- Agarwal, A., Tvrdá, E., and Sharma, R. (2014b). Relationship amongst teratozoospermia, seminal oxidative stress and male infertility. *Reprod. Biol. Endocrinol.* 12, 45. doi:10.1186/1477-7827-12-45
- Agarwal, A., and Wang, S. M. (2017). Clinical relevance of oxidation-reduction potential in the evaluation of male infertility. *Urology* 104, 84–89. doi:10.1016/j.urol.2017.02.016
- Aitken, R. J., De Iuliis, G. N., and Baker, M. A. (2012a). “Direct methods for the detection of reactive oxygen species in human semen samples,” in *Studies on men's Health and fertility.* Editors A. Agarwal, R. J. Aitken, and J. G. Alvarez (Totowa, NJ: Humana Press), 275–299. doi:10.1007/978-1-61779-776-7_14
- Aitken, R. J., Jones, K. T., and Robertson, S. A. (2012b). Reactive oxygen species and sperm function-in sickness and in health. *J. Androl.* 33, 1096–1106. doi:10.2164/jandrol.112.016535
- Alahmar, A. T. (2019). Role of oxidative stress in male infertility: an updated review. *J. Hum. Reprod. Sci.* 12, 4–18. doi:10.4103/jhrs.JHRS_150_18
- Amaral, A., Lourenço, B., Marques, M., and Ramalho-Santos, J. (2013). Mitochondria functionality and sperm quality. *Reproduction* 146, R163–R174. doi:10.1530/REP-13-0178
- Amaral, A., and Ramalho-Santos, J. (2010). Assessment of mitochondrial potential: implications for the correct monitoring of human sperm function. *Int. J. Androl.* 33, e180–e186. doi:10.1111/j.1365-2605.2009.00987.x
- Ammar, O., Mehdi, M., and Matorini, M. (2020). Teratozoospermia: its association with sperm DNA defects, apoptotic alterations, and oxidative stress. *Andrology* 8, 1095–1106. doi:10.1111/andr.12778
- Austin, C. R. (1952). The capacitation of the mammalian sperm. *Nature* 170, 326. doi:10.1038/170326a0
- Baccetti, B., Capitani, S., Collodel, G., Strehler, E., and Piomboni, P. (2002). Recent advances in human sperm pathology. *Contraception* 65, 283–287. doi:10.1016/s0010-7824(02)00290-1
- Baker, M. A., and Aitken, R. J. (2005). Reactive oxygen species in spermatozoa: methods for monitoring and significance for the origins of genetic disease and infertility. *Reprod. Biol. Endocrinol.* 3, 67. doi:10.1186/1477-7827-3-67
- Balbach, M., Buck, J., and Levin, L. R. (2020a). Using an extracellular flux analyzer to measure changes in glycolysis and oxidative phosphorylation during mouse sperm capacitation. *JoVE.* doi:10.3791/60815
- Balbach, M., Gervasi, M. G., Hidalgo, D. M., Visconti, P. E., Levin, L. R., Buck, J., et al. (2020b). Metabolic changes in mouse sperm during capacitation. *Biol. Reprod.* 103, 791–801. doi:10.1093/biolre/iaaa114
- Barratt, C. L. R., De Jonge, C. J., and Sharpe, R. M. (2018). ‘Man up’: the importance and strategy for placing male reproductive health centre stage in the political and research agenda. *Hum. Reprod.* 33, 541–545. doi:10.1093/humrep/dey020
- Barratt, C. L. R., Wang, C., Baldi, E., Toskin, I., Kiarie, J., and Lamb, D. J. (2022). What advances may the future bring to the diagnosis, treatment, and care of male sexual and reproductive health? *Fertil. Steril.* 117, 258–267. doi:10.1016/j.fertnstert.2021.12.013
- Baumber, J., Vo, A., Sabeur, K., and Ball, B. A. (2002). Generation of reactive oxygen species by equine neutrophils and their effect on motility of equine spermatozoa. *Theriogenology* 57, 1025–1033. doi:10.1016/s0093-691x(01)00710-5
- Benjamin, D., Sharma, R. K., Moazzam, A., and Agarwal, A. (2012). *Methods for the detection of ROS in human sperm samples BT - studies on men's health and fertility.* in Editors A. Agarwal, R. J. Aitken, and J. G. Alvarez (Totowa, NJ: Humana Press), 257–273. doi:10.1007/978-1-61779-776-7_13
- Björndahl, L., and Kirkman Brown, J. other Editorial Board Members of the WHO Laboratory Manual for the Examination and Processing of Human Semen (2022). The sixth edition of the WHO laboratory manual for the examination and processing of human semen: ensuring quality and standardization in basic examination of human ejaculates. *Fertil. Steril.* 117, 246–251. doi:10.1016/j.fertnstert.2021.12.012
- Boguenet, M., Bouet, P.-E., Spiers, A., Reynier, P., and May-Panloup, P. (2021). Mitochondria: their role in spermatozoa and in male infertility. *Hum. Reprod. Update* 27, 697–719. doi:10.1093/humupd/dmab001
- Bonanno, O., Romeo, G., Asero, P., Pezzino, F. M., Castiglione, R., Burrello, N., et al. (2016). Sperm of patients with severe asthenozoospermia show biochemical, molecular and genomic alterations. *Reproduction* 152, 695–704. doi:10.1530/REP-16-0342
- Boveris, A., and Chance, B. (1973). The mitochondrial generation of hydrogen peroxide. General properties and effect of hyperbaric oxygen. *Biochem. J.* 134, 707–716. doi:10.1042/bj1340707
- Bradford, M. M. (1976). A rapid and sensitive method for the quantitation of microgram quantities of protein utilizing the principle of protein-dye binding. *Anal. Biochem.* 72, 248–254. doi:10.1006/abio.1976.9999
- Brand, M. D., and Nicholls, D. G. (2011). Assessing mitochondrial dysfunction in cells. *Biochem. J.* 435, 297–312. doi:10.1042/BJ20110162
- Cairo workshop group (2020). The current status and future of andrology: a consensus report from the Cairo workshop group. *Andrology* 8, 27–52. doi:10.1111/andr.12720
- Cardoso, A. R., Chausse, B., da Cunha, F. M., Luévano-Martínez, L. A., Marazzi, T. B. M., Pessoa, P. S., et al. (2012). Mitochondrial compartmentalization of redox processes. *Free Radic. Biol. Med.* 52, 2201–2208. doi:10.1016/j.freeradbiomed.2012.03.008
- Cassina, A., Silveira, P., Cantu, L., Montes, J., Radi, R., Sapiro, R., et al. (2015). Defective human sperm cells are associated with mitochondrial dysfunction and oxidant production. *Biol. Reprod.* 93, 119. doi:10.1095/biolreprod.115.130989
- Castellini, C., D’Andrea, S., Cordeschi, G., Totaro, M., Parisi, A., Di Emidio, G., et al. (2021). Pathophysiology of mitochondrial dysfunction in human spermatozoa: focus on energetic metabolism, oxidative stress and apoptosis. *Antioxidants* 10, 695. doi:10.3390/antiox10050695
- Cedíková, M., Miklíková, M., Grundmanová, M., Zech, N. H., Králíčková, M., Kuncová, J., et al. (2014). Sperm mitochondrial function in men with normozoospermia and asthenozoospermia. *Ceska Gynekol.* 79, 22–28.
- Cedikova, M., Miklikova, M., Stachova, L., Grundmanova, M., Tuma, Z., Vetvicka, V., et al. (2014). Effects of the Czech propolis on sperm mitochondrial function. *Evid. Based. Complement. Altern. Med.*, 248768. doi:10.1155/2014/248768
- Courtade, M., Lagorce, C., Bujan, L., Caratero, C., and Miesusset, R. (1998). Clinical characteristics and light and transmission electron microscopic sperm defects of infertile men with persistent unexplained asthenozoospermia. *Fertil. Steril.* 70, 297–304. doi:10.1016/s0015-0282(98)00152-6
- De Jonge, C., and Barratt, C. L. R. (2019). The present crisis in male reproductive health: an urgent need for a political, social, and research roadmap. *Andrology* 7, 762–768. doi:10.1111/andr.12673

- de Lamirande, E., Jiang, H., Zini, A., Kodama, H., and Gagnon, C. (1997). Reactive oxygen species and sperm physiology. *Rev. Reprod.* 2, 48–54. doi:10.1530/ror.0.0020048
- du Plessis, S. S., Makker, K., Desai, N. R., and Agarwal, A. (2008). Impact of oxidative stress on IVF. *Expert Rev. Obstet. Gynecol.* 3, 539–554. doi:10.1586/17474108.3.4.539
- Durairajanayagam, D., Singh, D., Agarwal, A., and Henkel, R. (2021). Causes and consequences of sperm mitochondrial dysfunction. *Andrologia* 53, e13666. doi:10.1111/and.13666
- Eroglu, M., Sahin, S., Durukan, B., Ozakpinar, O. B., Erdinc, N., Turkgeldi, L., et al. (2014). Blood serum and seminal plasma selenium, total antioxidant capacity and coenzyme q10 levels in relation to semen parameters in men with idiopathic infertility. *Biol. Trace Elem. Res.* 159, 46–51. doi:10.1007/s12011-014-9978-7
- Escada-Rebello, S., Mora, F. G., Sousa, A. P., Almeida-Santos, T., Paiva, A., Ramalho-Santos, J., et al. (2020). Fluorescent probes for the detection of reactive oxygen species in human spermatozoa. *Asian J. Androl.* 22(5):465. doi:10.4103/aja.aja_132_19
- Ferramosca, A., Focarelli, R., Piomboni, P., Coppola, L., Zara, V., Coppola, L., et al. (2008). Oxygen uptake by mitochondria in demembrated human spermatozoa: a reliable tool for the evaluation of sperm respiratory efficiency. *Int. J. Androl.* 31, 337–345. doi:10.1111/j.1365-2605.2007.00775.x
- Ferramosca, A., Provenzano, S. P., Coppola, L., and Zara, V. (2012). Mitochondrial respiratory efficiency is positively correlated with human sperm motility. *Urology* 79, 809–814. doi:10.1016/j.urology.2011.12.042
- Ferramosca, A., and Zara, V. (2014). Bioenergetics of mammalian sperm capacitation. *Biomed. Res. Int.*, 902953. doi:10.1155/2014/902953
- Ferreira, J. J., Cassina, A., Irigoyen, P., Ford, M., Pietroroia, S., Peramsetty, N., et al. (2021). Increased mitochondrial activity upon CatSper channel activation is required for mouse sperm capacitation. *Redox Biol.* 48, 102176. doi:10.1016/j.redox.2021.102176
- Gallon, F., Marchetti, C., Jouy, N., and Marchetti, P. (2006). The functionality of mitochondria differentiates human spermatozoa with high and low fertilizing capability. *Fertil. Steril.* 86, 1526–1530. doi:10.1016/j.fertnstert.2006.03.055
- Galloway, C. A., Lee, H., and Yoon, Y. (2012). Mitochondrial morphology—emerging role in bioenergetics. *Free Radic. Biol. Med.* 53, 2218–2228. doi:10.1016/j.freeradbiomed.2012.09.035
- Gay, C. A., and Gebicki, J. M. (2002). Perchloric acid enhances sensitivity and reproducibility of the ferric-xylene orange peroxide assay. *Anal. Biochem.* 304, 42–46. doi:10.1006/abio.2001.5566
- Giaccagli, M. M., Gómez-Eliás, M. D., Herzfeld, J. D., Marín-Briggiler, C. I., Cuasnicú, P. S., Cohen, D. J., et al. (2021). Capacitation-induced mitochondrial activity is required for sperm fertilizing ability in mice by modulating hyperactivation. *Front. Cell. Dev. Biol.* 9, 767161. doi:10.3389/fcell.2021.767161
- González-Perilli, L., Álvarez, M. N., Prolo, C., Radi, R., Rubbo, H., Trostchansky, A., et al. (2013). Nitroarachidonic acid prevents NADPH oxidase assembly and superoxide radical production in activated macrophages. *Free Radic. Biol. Med.* 58, 126–133. doi:10.1016/j.freeradbiomed.2012.12.020
- Goodson, S. G., Qiu, Y., Sutton, K. A., Xie, G., Jia, W., O'Brien, D. A., et al. (2012). Metabolic substrates exhibit differential effects on functional parameters of mouse sperm capacitation. *Biol. Reprod.* 87, 175. doi:10.1095/biolreprod.112.102673
- Gopalkrishnan, K., Padwal, V., D'Souza, S., and Shah, R. (1995). Severe asthenozoospermia: a structural and functional study. *Int. J. Androl.* 18, 67–74. doi:10.1111/j.1365-2605.1995.tb00642.x
- Guzick, D. S., Overstreet, J. W., Factor-Litvak, P., Brazil, C. K., Nakajima, S. T., Coutifaris, C., et al. (2001). Sperm morphology, motility, and concentration in fertile and infertile men. *N. Engl. J. Med.* 345, 1388–1393. doi:10.1056/NEJMoa003005
- Hereng, T. H., Elgstøen, K. B. P., Eide, L., Rosendal, K. R., and Skålhegg, B. S. (2014). Serum albumin and HCO₃⁻ regulate separate pools of ATP in human spermatozoa. *Hum. Reprod.* 29, 918–930. doi:10.1093/humrep/deu028
- Hidalgo, D. M., Romarowski, A., Gervasi, M. G., Navarrete, F., Balbach, M., Salicioni, A. M., et al. (2020). Capacitation increases glucose consumption in murine sperm. *Mol. Reprod. Dev.* 87, 1037–1047. doi:10.1002/mrd.23421
- Jiang, Z. Y., Woollard, A. C., and Wolff, S. P. (1990). Hydrogen peroxide production during experimental protein glycation. *FEBS Lett.* 268, 69–71. doi:10.1016/0014-5793(90)80974-n
- Kasai, T., Ogawa, K., Mizuno, K., Nagai, S., Uchida, Y., Ohta, S., et al. (2002). Relationship between sperm mitochondrial membrane potential, sperm motility, and fertility potential. *Asian J. Androl.* 4, 97–103.
- Khosrowbeygi, A., and Zarghami, N. (2007). Levels of oxidative stress biomarkers in seminal plasma and their relationship with seminal parameters. *BMC Clin. Pathol.* 7, 6. doi:10.1186/1472-6890-7-6
- Kliesch, S. (2014). Diagnosis of male infertility: diagnostic work-up of the infertile man. *Eur. Urol. Suppl.* 13, 73–82. doi:10.1016/j.eursup.2014.08.002
- Koppers, A. J., De Luliis, G. N., Finnie, J. M., McLaughlin, E. A., and Aitken, R. J. (2008). Significance of mitochondrial reactive oxygen species in the generation of oxidative stress in spermatozoa. *J. Clin. Endocrinol. Metab.* 93, 3199–3207. doi:10.1210/jc.2007-2616
- Kruger, T. F., Acosta, A. A., Simmons, K. F., Swanson, R. J., Matta, J. F., Oehninger, S., et al. (1988). Predictive value of abnormal sperm morphology in *in vitro* fertilization. *Fertil. Steril.* 49, 112–117. doi:10.1016/S0015-0282(16)59660-5
- Kumar, N. (2022). Sperm mitochondria, the driving force behind human spermatozoa activities: its functions and dysfunctions - a narrative review. *Curr. Mol. Med.* 22. doi:10.2174/156652402266220408104047
- Kumar, R., Venkatesh, S., Kumar, M., Tanwar, M., Shamsi, M. B., Kumar, R., et al. (2009). Oxidative stress and sperm mitochondrial DNA mutation in idiopathic oligoasthenozoospermic men. *Indian J. Biochem. Biophys.* 46, 172–177.
- Le Foll, N., Pont, J.-C., L'Hostis, A., Guilbert, T., Bouillaud, F., Wolf, J.-P., et al. (2021). Cyclic FEE peptide improves human sperm movement parameters without modification of their energy metabolism. *Int. J. Mol. Sci.* 22, 11263. doi:10.3390/ijms222011263
- Madej, D., Granda, D., Sicinska, E., and Kaluza, J. (2021). Influence of fruit and vegetable consumption on antioxidant status and semen quality: a cross-sectional study in adult men. *Front. Nutr.* 8, 753843. doi:10.3389/fnut.2021.753843
- Malić Vončina, S., Golob, B., Ihan, A., Kopitar, A. N., Kolbezen, M., Zorn, B., et al. (2016). Sperm DNA fragmentation and mitochondrial membrane potential combined are better for predicting natural conception than standard sperm parameters. *Fertil. Steril.* 105, 637–644. doi:10.1016/j.fertnstert.2015.11.037
- Marchetti, C., Obert, G., Deffosez, A., Formstecher, P., and Marchetti, P. (2002). Study of mitochondrial membrane potential, reactive oxygen species, DNA fragmentation and cell viability by flow cytometry in human sperm. *Hum. Reprod.* 17, 1257–1265. doi:10.1093/humrep/17.5.1257
- Marín-Briggiler, C. I., Luque, G. M., Gervasi, M. G., Oscoz-Susino, N., Sierra, J. M., Mondillo, C., et al. (2021). Human sperm remain motile after a temporary energy restriction but do not undergo capacitation-related events. *Front. Cell. Dev. Biol.* 9, 777086. doi:10.3389/fcell.2021.777086
- Marques, M., Sousa, A. P., Paiva, A., Almeida-Santos, T., and Ramalho-Santos, J. (2014). Low amounts of mitochondrial reactive oxygen species define human sperm quality. *Reproduction* 147, 817–824. doi:10.1530/REP-13-0644
- Martínez, J., Marmisolle, I., Tarallo, D., and Quijano, C. (2020). Mitochondrial bioenergetics and dynamics in secretion processes. *Front. Endocrinol.* 11, 319. doi:10.3389/fendo.2020.00319
- Martínez, J., Tarallo, D., Martínez-Palma, L., Victoria, S., Bresque, M., Rodríguez-Bottero, S., et al. (2019). Mitofusins modulate the increase in mitochondrial length, bioenergetics and secretory phenotype in therapy-induced senescent melanoma cells. *Biochem. J.* 476, 2463–2486. doi:10.1042/BCJ20190405
- Messner, K. R., and Inlay, J. A. (2002). *In vitro* quantitation of biological superoxide and hydrogen peroxide generation. *Methods Enzymol.* 349, 354–361. doi:10.1016/s0076-6879(02)49351-2
- Miki, K. (2007). Energy metabolism and sperm function. *Soc. Reprod. Fertil. Suppl.* 65, 309–325.
- Miki, K., Qu, W., Goulding, E. H., Willis, W. D., Bunch, D. O., Strader, L. F., et al. (2004). Glyceraldehyde 3-phosphate dehydrogenase-S, a sperm-specific glycolytic enzyme, is required for sperm motility and male fertility. *Proc. Natl. Acad. Sci. U. S. A.* 101, 16501–16506. doi:10.1073/pnas.0407708101
- Moscatelli, N., Spagnolo, B., Pisanello, M., Lemma, E. D., De Vittorio, M., Zara, V., et al. (2017). Single-cell-based evaluation of sperm progressive motility via fluorescent assessment of mitochondria membrane potential. *Sci. Rep.* 7, 17931. doi:10.1038/s41598-017-18123-1
- Mukai, C., and Okuno, M. (2004). Glycolysis plays a major role for adenosine triphosphate supplementation in mouse sperm flagellar movement. *Biol. Reprod.* 71, 540–547. doi:10.1095/biolreprod.103.026054
- Mukai, C., and Travis, A. J. (2012). What sperm can teach us about energy production. *Reprod. Domest. Anim.* 47, 164–169. doi:10.1111/j.1439-0531.2012.02071.x
- Mundy, A. J., Ryder, T. A., and Edmonds, D. K. (1995). Asthenozoospermia and the human sperm mid-piece. *Hum. Reprod.* 10, 116–119. doi:10.1093/humrep/10.1.116
- Nascimento, J. M., Shi, L. Z., Tam, J., Chandsawangbhuwana, C., Durrant, B., Botvinick, E. L., et al. (2008). Comparison of glycolysis and oxidative phosphorylation as energy sources for mammalian sperm motility, using the combination of fluorescence imaging, laser tweezers, and real-time automated tracking and trapping. *J. Cell. Physiol.* 217, 745–751. doi:10.1002/jcp.21549

- Nohl, H., Gille, L., Kozlov, A., and Staniek, K. (2003). Are mitochondria a spontaneous and permanent source of reactive oxygen species? *Redox Rep.* 8, 135–141. doi:10.1179/135100003225001502
- Nowicka-Bauer, K., and Nixon, B. (2020). Molecular changes induced by oxidative stress that impair human sperm motility. *Antioxidants* 9, E134. doi:10.3390/antiox9020134
- Otani, H., Tanaka, O., Kasai, K., and Yoshioka, T. (1988). Development of mitochondrial helical sheath in the middle piece of the mouse spermatid tail: regular dispositions and synchronized changes. *Anat. Rec.* 222, 26–33. doi:10.1002/ar.1092220106
- Pahune, P. P., Choudhari, A. R., and Muley, P. A. (2013). The total antioxidant power of semen and its correlation with the fertility potential of human male subjects. *J. Clin. Diagn. Res.* 7, 991–995. doi:10.7860/JCDR/2013/4974.3040
- Pandruvada, S., Royfman, R., Shah, T. A., Sindhwani, P., Dupree, J. M., Schon, S., et al. (2021). Lack of trusted diagnostic tools for undetermined male infertility. *J. Assist. Reprod. Genet.* 38, 265–276. doi:10.1007/s10815-020-02037-5
- Pelliccione, F., Micillo, A., Cordeschi, G., D'Angeli, A., Necozone, S., Gandini, L., et al. (2011). Altered ultrastructure of mitochondrial membranes is strongly associated with unexplained asthenozoospermia. *Fertil. Steril.* 95, 641–646. doi:10.1016/j.fertnstert.2010.07.1086
- Piomboni, P., Focarelli, R., Stendardi, A., Ferramosca, A., and Zara, V. (2012). The role of mitochondria in energy production for human sperm motility. *Int. J. Androl.* 35, 109–124. doi:10.1111/j.1365-2605.2011.01218.x
- Quijano, C., Castro, L., Peluffo, G., Valez, V., and Radi, R. (2007). Enhanced mitochondrial superoxide in hyperglycemic endothelial cells: direct measurements and formation of hydrogen peroxide and peroxynitrite. *Am. J. Physiol. Heart Circ. Physiol.* 293, H3404–H3414. doi:10.1152/ajpheart.00761.2007
- Reyes, A. M., Hugo, M., Trostchansky, A., Capece, L., Radi, R., Trujillo, M., et al. (2011). Oxidizing substrate specificity of *Mycobacterium tuberculosis* alkyl hydroperoxide reductase E: Kinetics and mechanisms of oxidation and overoxidation. *Free Radic. Biol. Med.* 51, 464–473. doi:10.1016/j.freeradbiomed.2011.04.023
- Richer, S. C., and Ford, W. C. (2001). A critical investigation of NADPH oxidase activity in human spermatozoa. *Mol. Hum. Reprod.* 7, 237–244. doi:10.1093/molehr/7.3.237
- Robert, K. A., Sharma, R., Henkel, R., and Agarwal, A. (2020). An update on the techniques used to measure oxidative stress in seminal plasma. *Andrologia* 53, e13726. doi:10.1111/and.13726
- Roychoudhury, S., Sharma, R., Sikka, S., and Agarwal, A. (2016). Diagnostic application of total antioxidant capacity in seminal plasma to assess oxidative stress in male factor infertility. *J. Assist. Reprod. Genet.* 33, 627–635. doi:10.1007/s10815-016-0677-5
- Ruiz-Pesini, E., Diez, C., Lapena, A. C., Perez-Martos, A., Montoya, J., Alvarez, E., et al. (1998). Correlation of sperm motility with mitochondrial enzymatic activities. *Clin. Chem.* 44, 1616–1620. doi:10.1093/clinchem/44.8.1616
- Ruiz-Pesini, E., Diez-Sánchez, C., López-Pérez, M. J., and Enríquez, J. A. (2007). The role of the mitochondrion in sperm function: is there a place for oxidative phosphorylation or is this a purely glycolytic process? *Curr. Top. Dev. Biol.* 77, 3–19. doi:10.1016/S0070-2153(06)77001-6
- Ruiz-Pesini, E., Diez, C., Alvaréz, E., Enríquez, J. A., and Lopez-Perez, M. J. (2000). Seminal quality correlates with mitochondrial functionality. *Clin. Chim. Acta.* 300, 97–105. doi:10.1016/S0009-8981(00)00305-3
- Schindelin, J., Arganda-Carreras, I., Frise, E., Kaynig, V., Longair, M., Pietzsch, T., et al. (2012). Fiji: an open-source platform for biological-image analysis. *Nat. Methods* 9, 676–682. doi:10.1038/nmeth.2019
- Sharma, R., Roychoudhury, S., Singh, N., and Sarda, Y. (2017). “Methods to measure reactive oxygen species (ROS) and total antioxidant capacity (TAC) in the reproductive system BT oxidative stress.” in *Human reproduction: Shedding light on a complicated phenomenon*. Editors: A. Agarwal, R. Sharma, S. Gupta, A. Harlev, G. Ahmad, S. S. du Plessis, et al. (Cham: Springer International Publishing), 17–46. doi:10.1007/978-3-319-48427-3_2
- Skowronek, F., Casanova, G., Alciaturi, J., Capurro, A., Cantu, L., Montes, J. M., et al. (2012). DNA sperm damage correlates with nuclear ultrastructural sperm defects in teratozoospermic men. *Andrologia* 44, 59–65. doi:10.1111/j.1439-0272.2010.01106.x
- Sousa, A. P., Amaral, A., Baptista, M., Tavares, R., Caballero Campo, P., Caballero Peregrin, P., et al. (2011). Not all sperm are equal: Functional mitochondria characterize a subpopulation of human sperm with better fertilization potential. *PLoS One* 6, e18112. doi:10.1371/journal.pone.0018112
- Stendardi, A., Focarelli, R., Piomboni, P., Palumberi, D., Serafini, F., Ferramosca, A., et al. (2011). Evaluation of mitochondrial respiratory efficiency during *in vitro* capacitation of human spermatozoa. *Int. J. Androl.* 34, 247–255. doi:10.1111/j.1365-2605.2010.01078.x
- Storey, B. T. (2008). Mammalian sperm metabolism: oxygen and sugar, friend and foe. *Int. J. Dev. Biol.* 52, 427–437. doi:10.1387/ijdb.072522bs
- Tanga, B. M., Qamar, A. Y., Raza, S., Bang, S., Fang, X., Yoon, K., et al. (2021). Semen evaluation: Methodological advancements in sperm quality-specific fertility assessment - a review. *Anim. Biosci.* 34, 1253–1270. doi:10.5713/ab.21.0072
- Tourmente, M., Villar-Moya, P., Rial, E., and Roldan, E. R. S. (2015). Differences in ATP generation via glycolysis and oxidative phosphorylation and relationships with sperm motility in mouse species. *J. Biol. Chem.* 290, 20613–20626. doi:10.1074/jbc.M115.664813
- Traba, J., Miozzo, P., Akkaya, B., Pierce, S. K., and Akkaya, M. (2016). An optimized protocol to analyze glycolysis and mitochondrial respiration in lymphocytes. *J. Vis. Exp.* doi:10.3791/54918
- Twigg, J., Fulton, N., Gomez, E., Irvine, D. S., and Aitken, R. J. (1998). Analysis of the impact of intracellular reactive oxygen species generation on the structural and functional integrity of human spermatozoa: lipid peroxidation, DNA fragmentation and effectiveness of antioxidants. *Hum. Reprod.* 13, 1429–1436. doi:10.1093/humrep/13.6.1429
- Uribe, P., Villegas, J. V., Boguen, R., Treulen, F., Sánchez, R., Mallmann, P., et al. (2017). Use of the fluorescent dye tetramethylrhodamine methyl ester perchlorate for mitochondrial membrane potential assessment in human spermatozoa. *Andrologia* 49, e12753. doi:10.1111/and.12753
- Vander Borgh, M., and Wyns, C. (2018). Fertility and infertility: definition and epidemiology. *Clin. Biochem.* 62, 2–10. doi:10.1016/j.clinbiochem.2018.03.012
- Vorup-Jensen, T., Hjort, T., Joanna, V. A. P., Guttman, P., Jens, C. J., Uggerhøj, E., et al. (1999). X-ray microscopy of human spermatozoa shows change of mitochondrial morphology after capacitation. *Hum. Reprod.* 14, 880–884. doi:10.1093/humrep/14.4.880
- Walters, J. L. H., Anderson, A. L., Martins da Silva, S. J., Aitken, R. J., De Iulius, G. N., Sutherland, J. M., et al. (2020). Mechanistic insight into the regulation of lipoxygenase-Driven lipid peroxidation events in human spermatozoa and their impact on male fertility. *Antioxidants (Basel, Switz.)* 10, 10043. doi:10.3390/antiox10010043
- Wang, Y., Branicky, R., Noë, A., and Hekimi, S. (2018). Superoxide dismutases: dual roles in controlling ROS damage and regulating ROS signaling. *J. Cell. Biol.* 217, 1915–1928. doi:10.1083/jcb.201708007
- Who (2010). WHO Laboratory manual for the examination and processing of human semen. *World Health* 5, 286. doi:10.1038/aja.2008.57
- Who (2021). WHO Laboratory manual for the examination and processing of human semen. *World Health* 6, 117. doi:10.1016/j.fertnstert.2021.12.012
- Wilton, L. J., Temple-Smith, P. D., and de Kretser, D. M. (1992). Quantitative ultrastructural analysis of sperm tails reveals flagellar defects associated with persistent asthenozoospermia. *Hum. Reprod.* 7, 510–516. doi:10.1093/oxfordjournals.humrep.a137681
- Yáñez-Ortiz, I., Catalán, J., Mateo-Otero, Y., Dordas-Perpinyà, M., Gacem, S., Yeste, N., et al. (2021). Extracellular reactive oxygen species (ROS) production in fresh donkey sperm exposed to reductive stress, oxidative stress and NETosis. *Antioxidants (Basel, Switz.)* 10, 10043. doi:10.3390/antiox10091367
- Zhou, M., Diwu, Z., Panchuk-Voloshina, N., and Haugland, R. P. (1997). A stable nonfluorescent derivative of resorufin for the fluorometric determination of trace hydrogen peroxide: applications in detecting the activity of phagocyte NADPH oxidase and other oxidases. *Anal. Biochem.* 253, 162–168. doi:10.1006/abio.1997.2391
- Zini, A., Garrels, K., and Phang, D. (2000). Antioxidant activity in the semen of fertile and infertile men. *Urology* 55, 922–926. doi:10.1016/S0090-4295(00)00453-2