

LETTER • OPEN ACCESS

A data-driven methodological routine to identify key indicators for social-ecological system archetype mapping

To cite this article: Manuel Pacheco-Romero *et al* 2022 *Environ. Res. Lett.* **17** 045019

View the [article online](#) for updates and enhancements.

You may also like

- [Methods for improving sensitivity of crack quantitative monitoring of flexible eddy current array sensor](#)

Xianghong Fan, Tao Chen, Jinqiang Du et al.

- [Effect modification of the association between fine particulate air pollution during a wildfire event and respiratory health by area-level measures of socioeconomic status, race/ethnicity, and smoking prevalence](#)

C E Reid, E M Considine, G L Watson et al.

- [Latin American cities with higher socioeconomic status are greening from a lower baseline: evidence from the SALURBAL project](#)

Yang Ju, Mika Moran, Xize Wang et al.

ENVIRONMENTAL RESEARCH
LETTERS

LETTER

A data-driven methodological routine to identify key indicators for social-ecological system archetype mapping

OPEN ACCESS

RECEIVED
2 July 2021REVISED
28 January 2022ACCEPTED FOR PUBLICATION
15 March 2022PUBLISHED
30 March 2022

Original content from this work may be used under the terms of the [Creative Commons Attribution 4.0 licence](#).

Any further distribution of this work must maintain attribution to the author(s) and the title of the work, journal citation and DOI.



Manuel Pacheco-Romero^{1,2,3,*} , María Vallejos^{4,5} , José M Paruelo^{4,5,6,7} , Domingo Alcaraz-Segura^{1,8,9} , M Trinidad Torres-García^{1,2} , María J. Salinas-Bonillo^{1,2}  and Javier Cabello^{1,2} 

¹ Andalusian Center for the Assessment and Monitoring of Global Change (CAESCG), University of Almería, Almería, Spain

² Department of Biology and Geology, University of Almería, Almería, Spain

³ Faculty of Sustainability, Leuphana University Lüneburg, Lüneburg, Germany

⁴ Instituto Nacional de Investigación Agropecuaria (INIA), La Estanzuela, Departamento de Colonia, Uruguay

⁵ Cátedra de Métodos Cuantitativos y Sistemas de Información, Facultad de Agronomía, Universidad de Buenos Aires, Buenos Aires, Argentina

⁶ Facultad de Ciencias, IECA, Universidad de la República, Montevideo, Uruguay

⁷ Laboratorio de Análisis Regional y Teledetección, IFEVA, Facultad de Agronomía, CONICET, Buenos Aires, Argentina

⁸ Department of Botany, University of Granada, Granada, Spain

⁹ iecolab, Interuniversity Institute for Earth System Research (IISTA), University of Granada, Granada, Spain

* Author to whom any correspondence should be addressed.

E-mail: manuel.pacheco@ual.es

Keywords: coupled human and natural systems, essential social-ecological system variables, human-environment interactions, long-term social-ecological research, LTSEr, random forest, social-ecological system framework

Supplementary material for this article is available [online](#)

Abstract

The spatial mapping of social-ecological system (SES) archetypes constitutes a fundamental tool to operationalize the SES concept in empirical research. Approaches to detect, map, and characterize SES archetypes have evolved over the last decade towards more integrative and comparable perspectives guided by SES conceptual frameworks and reference lists of variables. However, hardly any studies have investigated how to empirically identify the most relevant set of indicators to map the diversity of SESs. In this study, we propose a data-driven methodological routine based on multivariate statistical analysis to identify the most relevant indicators for mapping and characterizing SES archetypes in a particular region. Taking Andalusia (Spain) as a case study, we applied this methodological routine to 86 indicators representing multiple variables and dimensions of the SES. Additionally, we assessed how the empirical relevance of these indicators contributes to previous expert and empirical knowledge on key variables for characterizing SESs. We identified 29 key indicators that allowed us to map 15 SES archetypes encompassing natural, mosaic, agricultural, and urban systems, which uncovered contrasting land sharing and land sparing patterns throughout the territory. We found synergies but also disagreements between empirical and expert knowledge on the relevance of variables: agreement on their widespread relevance (32.7% of the variables, e.g. crop and livestock production, net primary productivity, population density); relevance conditioned by the context or the scale (16.3%, e.g. land protection, educational level); lack of agreement (20.4%, e.g. economic level, land tenure); need of further assessments due to the lack of expert or empirical knowledge (30.6%). Overall, our data-driven approach can contribute to more objective selection of relevant indicators for SES mapping, which may help to produce comparable and generalizable empirical knowledge on key variables for characterizing SESs, as well as to derive more representative descriptions and causal factor configurations in SES archetype analysis.

1. Introduction

Archetype analysis has become a fundamental tool in sustainability science to identify typologies of

human-nature interaction (e.g. social-ecological systems). Characterizing archetypes of social-ecological systems (SESs) is useful to work with their complexity at an intermediate level of abstraction between

specific case studies and general theories, facilitating knowledge comparison and generalization (Oberlack *et al* 2019). Specifically, the identification and mapping of SES archetypes as typologies of cases (*sensu* Oberlack *et al* 2019) allows to translate the SES concept into the territory and make it spatially explicit, by delineating territorial units that share similar social, ecological, and human-nature interaction patterns (e.g. SES archetypes by Rocha *et al* 2020, socio-ecological functional types by Vallejos *et al* 2020). SES maps can work as templates for decision-makers to develop more integrative and sustainable models of territorial management that consider the coupling between human and natural systems (Oberlack *et al* 2019, Sietz *et al* 2019). The diversity of approaches developed in the last years to map SESs has enriched our knowledge on their characteristics and dynamics worldwide (e.g. Alessa *et al* 2008, Ellis and Ramankutty 2008, Václavík *et al* 2013, Hamann *et al* 2015, Martín-López *et al* 2017, Dressel *et al* 2018, Levers *et al* 2018, Quintas-Soriano *et al* 2019, Rocha *et al* 2020, Vallejos *et al* 2020), although the conceptual and methodological pluralism could hinder cross-context and cross-scale comparisons (Balvanera *et al* 2017, de Vos *et al* 2019).

Recently, the identification of SES archetypes as typologies of cases has moved towards more integrative perspectives that consider the multidimensional aspects of human-nature interactions. Thus, there is a growing number of studies that use a broader range of social-ecological indicators (e.g. Václavík *et al* 2013, Dittrich *et al* 2017, Martín-López *et al* 2017, Lazari *et al* 2019) and that cross-reference them with SES conceptual frameworks and model lists of variables (e.g. Dressel *et al* 2018, Rocha *et al* 2020, Vallejos *et al* 2020, Pacheco-Romero *et al* 2021), which can contribute to develop more comparable research (Cox *et al* 2020). However, in most of them, indicators are selected *ad hoc* by the researcher based on literature reviews, the research question, or practical reasons (e.g. data availability), but not from the statistical performance of the data itself. To our knowledge, hardly any studies have investigated how to empirically identify the most relevant set of indicators to map and characterize the diversity of SESs in a given region, which still represents a major challenge for archetype analysis (Eisenack *et al* 2019). Such studies would allow to produce more objective and generalizable knowledge on the causal factors that determine the distribution and dynamics of SESs across contexts and scales, enhancing the interconnectedness of place-based social-ecological research (Václavík *et al* 2016).

Knowing which are the most relevant general variables for the study of SESs is a current scientific endeavor to foster the development of more harmonized social-ecological research and monitoring protocols through a shared language (Balvanera *et al* 2017, Holzer *et al* 2018, Mirtl *et al* 2018,

Cox *et al* 2020, Pacheco-Romero *et al* 2020). However, to date, only first steps have been taken to identify such variables, and the generated knowledge is still sparse. For instance, some studies have built reference lists of variables for characterizing and monitoring SESs (Ostrom 2009, McGinnis and Ostrom 2014, Frey 2017, Cox *et al* 2020, Pacheco-Romero *et al* 2020). Other initiatives are developing frameworks to identify essential variables for sustainable development goals (Reyers *et al* 2017, Lehmann *et al* 2020), for conservation management in natural protected areas (Guerra *et al* 2019), or for measuring and monitoring ecosystem services (Balvanera *et al* 2022). To advance in the identification of essential variables for SESs, the knowledge produced through place-based social-ecological research is fundamental. In this sense, the potential of SES mapping studies could be fostered through new approaches that systematically identify the most relevant indicators for characterizing the diversity of SESs across territories.

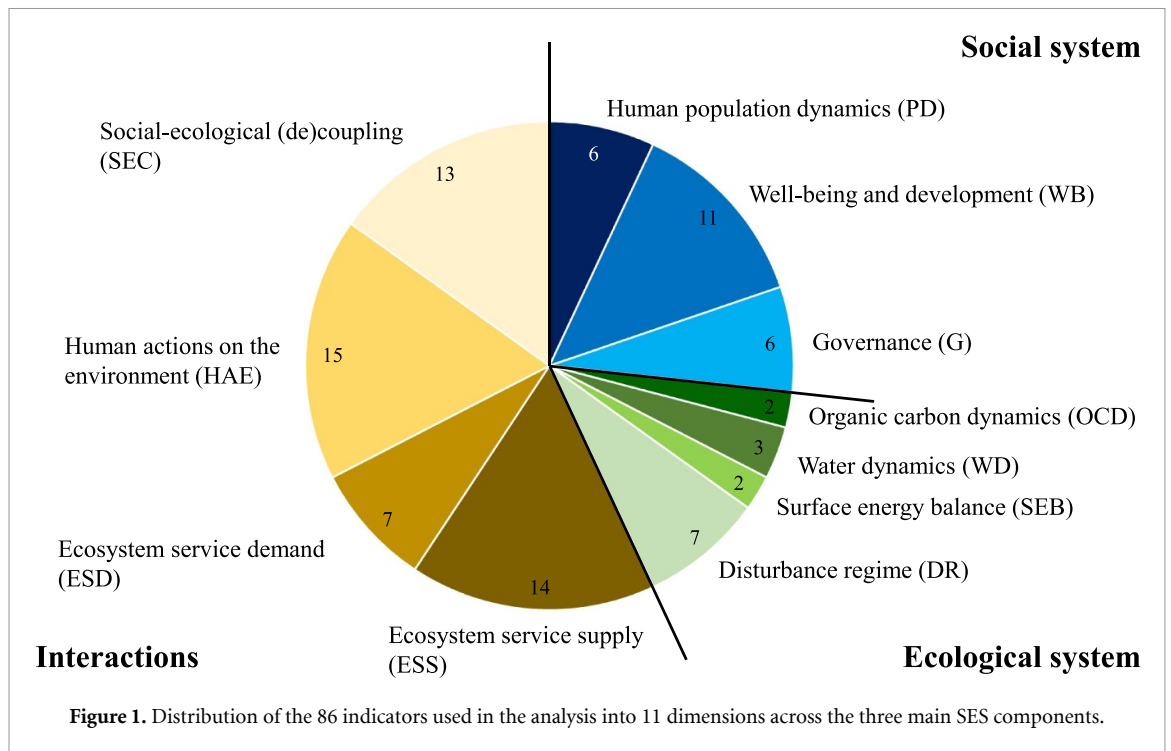
In this study, we propose an approach to identify the most relevant indicators to map SES archetypes. Our goal was to enhance objectivity in the indicator selection process by a more standardized and repeatable method that facilitates the comparability and knowledge generalization of SES mapping studies. Specifically, we developed a data-driven methodological routine to detect and map SESs by identifying the most statistically meaningful indicators to capture the social-ecological diversity. We operationalized a reference list of variables and a conceptual framework (Pacheco-Romero *et al* 2020) to organize the indicator's database and characterize the identified SESs. We used the pilot case study of Andalusia (southern Spain) to illustrate the common process of responding the following three questions when mapping SES archetypes:

- (a) What are the most relevant indicators to identify and characterize the diversity of SES archetypes?
- (b) What are the main SES archetypes and the characteristics that define them?
- (c) What does our data-driven selection of indicators contribute to previous expert and empirical knowledge on key variables for characterizing and mapping SESs?

2. Materials and methods

2.1. Database development

We developed a database of 86 continuous indicators using open regional databases (table S1.1 available online at stacks.iop.org/ERL/17/045019/mmedia). Indicators were compiled for all the municipalities in Andalusia (Spain) ($n = 778$ municipalities to date 2016), an ecologically and culturally diverse region with high availability of social and ecological data. We operationalized the reference list of variables and conceptual framework proposed by



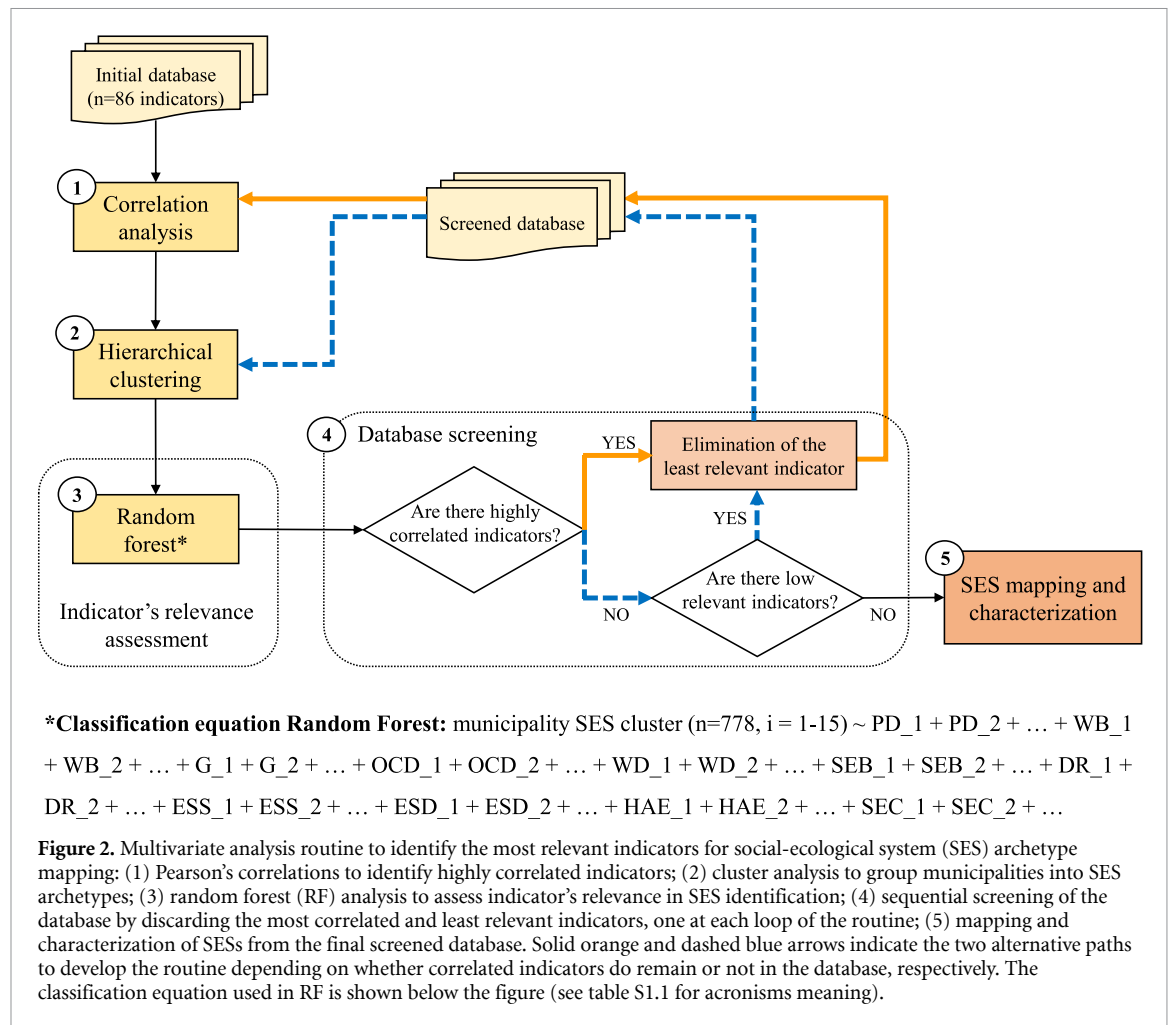
Pacheco-Romero *et al* (2020) (figure S1.1) to organize the database and facilitate the subsequent characterization of SES archetypes. Thus, our indicators represented 49 variables distributed into 11 dimensions across the three main SES components (i.e. social system, ecological system, and interactions) (figures 1 and S1.2). When needed, indicators were aggregated at the municipality level by calculating the spatial mean for continuous indicators. In the case of categorical indicators, these were transformed into continuous data by calculating the relative area share per municipality of specific classes of interest. Overall, to ensure comparability among municipalities, we calculated relative values (e.g. per unit area, per inhabitant, area share) if required.

2.2. Identification of key indicators for SES mapping

We developed a methodological routine based on multivariate analysis to screen the initial database through the sequential elimination of the least relevant and highly correlated indicators (figure 2). First, we inspected Pearson's correlations to identify highly correlated indicators. Second, we developed a cluster analysis to group municipalities into SES archetypes. We applied a hierarchical cluster analysis (HCA) based on Ward's method, which minimizes the total variance within clusters (Ward 1963), and a less restrictive Manhattan distance to ensure convergence (Rocha *et al* 2020). To determine the optimum number of clusters, we tested different cut-off levels of the cluster dendrogram to obtain a comprehensible picture of the diversity of SESs based on our knowledge of the study area. This yielded a set of 15

SESs, which was kept constant throughout the analysis. Third, we assessed the relevance of the indicators for identifying such SESs by computing a random forest analysis (RF) (Breiman 2001). To define the classification equation that this analysis takes as input, we used as independent variables all indicators, and as dependent variable the SES cluster assigned to each municipality by the HCA (see equation in figure 2). From RF run, the mean decrease accuracy (MDA) index was calculated to assess each indicator's importance in SES identification. This index represents how the accuracy of the classification of municipalities into the SES clusters decreases if an indicator is eliminated. Thus, the higher the value of the index, the greater the importance of the indicator (Archer and Kimes 2008, Han *et al* 2016). We performed all the analysis in R (R Core Team 2018).

Fourth, we screened the database by discarding the most correlated and least relevant indicators, one at each loop of the routine. This means that after removing an indicator, the cluster analysis and the RF were re-run to obtain a new SES clustering and indicator's relevance for this new classification. We eliminated correlated indicators first ($|r| > 0.7$; Dormann *et al* 2013), discarding those that showed the lowest relevance in the RF (i.e. the lowest MDA index values) (orange path, figure 2). Once correlation was reduced in the database overall, we continued eliminating the least relevant indicators (dashed blue path, figure 2). For our case study, we considered as low relevant indicators those with a MDA index value below 20. Thus, we halted the screening process when no indicator showed a MDA below this threshold.



2.3. Mapping and characterization of SESs

Once the database was screened, we mapped the SES cluster memberships for all municipalities from the last hierarchical clustering (step four, figure 2). To characterize the identified SESs, we assessed the magnitude and direction of impact of each indicator for each cluster (cf Levers *et al* 2018). We first averaged indicator values across all municipalities in a specific cluster, and then calculated the deviation (in standard deviations) of the cluster mean to the overall mean of the entire study area (table S1.2). Thus, positive deviances refer to above average values, and negative deviances to below average values, regarding the overall mean for the study area. Based on the impact of indicators in each cluster, and our knowledge of the study area, we then described, labelled, and classified SESs according to their characteristics and spatial patterns.

2.4. Comparing empirical and expert knowledge on the relevance of variables to characterize and map SESs

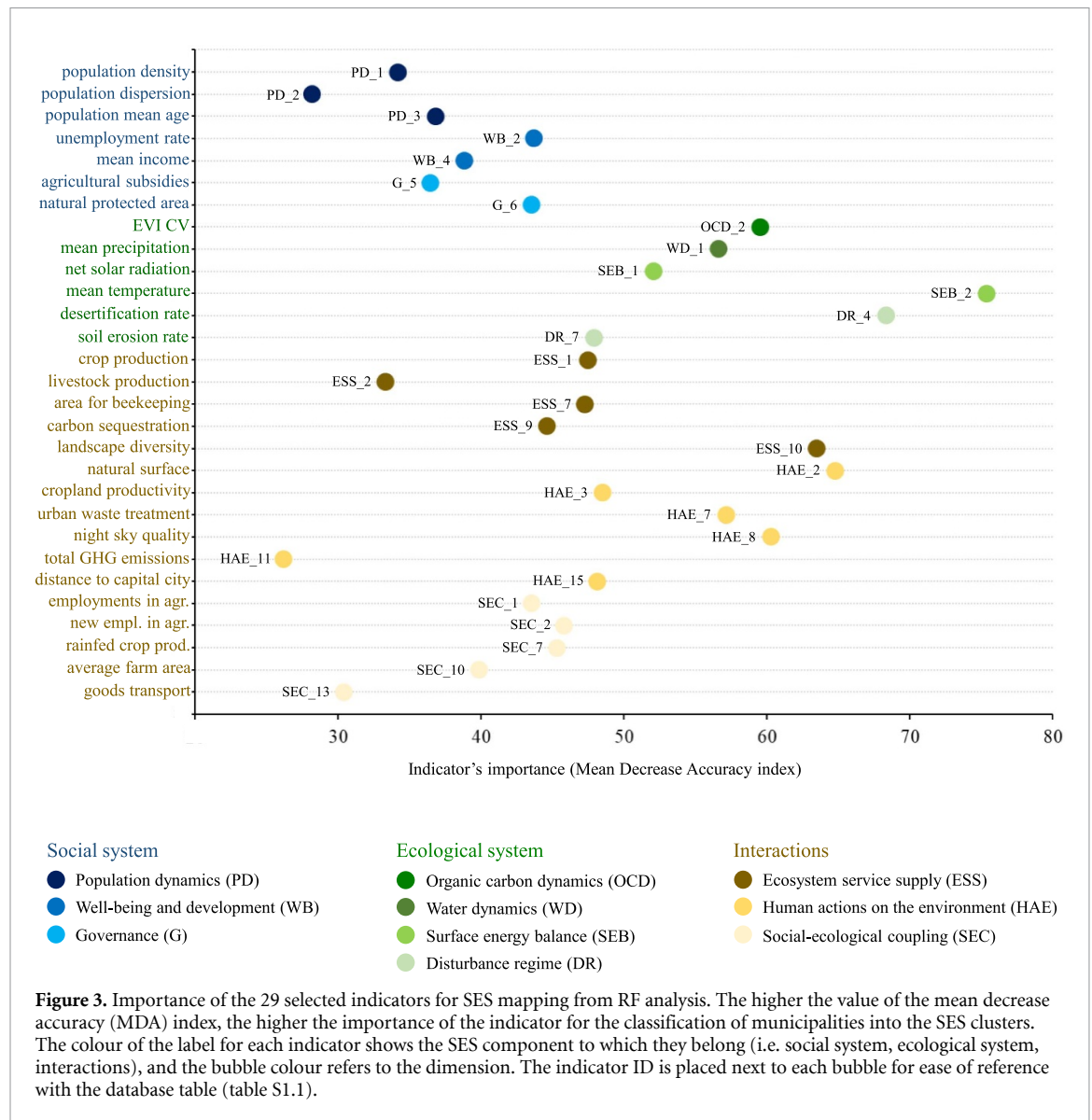
Finally, we compared the empirical relevance of our indicators with existing empirical and expert knowledge on key variables for the study of SESs. For that, we focus on the 49 variables operationalized by the 86 indicators used in our analysis (table S1.1), and

developed a matrix where variables were organized according to: (a) their use by preceding SES mapping studies (at local/regional scales or across scales); (b) their relevance according to expert knowledge; and (c) their relevance for our specific case-study (i.e. whether they were selected or not for SES mapping after the database screening –table S1.1). For point one, we based on a literature review on variables used in SES mapping studies (hereafter, empirical knowledge), and for point two, on a reference list of prioritized variables from a survey conducted to SES researchers (hereafter, expert knowledge), both developed in Pacheco-Romero *et al* (2020) (see table S1.3, and figure S1.2).

3. Results

3.1. Key indicators for SES mapping

From the initial list of 86 indicators, we identified 29 relevant and independent indicators for mapping the diversity of SES archetypes in Andalusia, representing 10 of the 11 operationalized dimensions of the SES (figure 3 and table S1.1). The ten most relevant indicators (figure 3) included characteristics of the ecological system (mean annual temperature, desertification rate, seasonal coefficient of variation

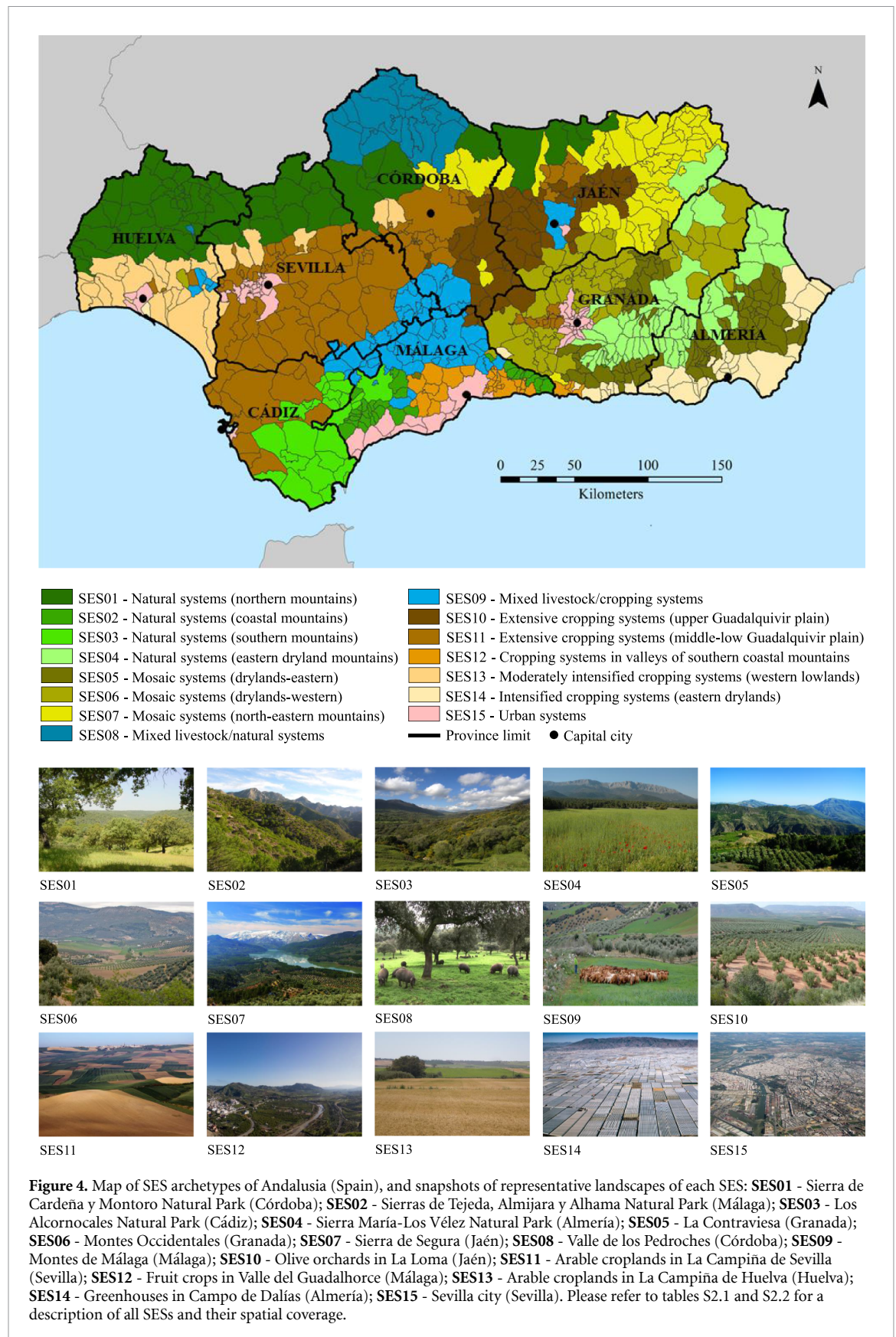


of the enhanced vegetation index, mean annual precipitation, net solar radiation), and of the interaction component (natural surface area, landscape diversity, night sky quality, greenhouse gas emissions in urban waste treatment, cropland productivity). At the bottom of the ranking there were some indicators of the social system component (population density, population dispersion, population mean age, mean income and agricultural subsidies) and of the interaction component (livestock production, total greenhouse gas emissions, employments in agriculture, average farm area, CO₂ emissions in goods transport). Overall, ecological system indicators were at the top of the ranking, while social system indicators were at the bottom. It is worth mentioning that all indicators from the ecosystem service demand dimension (interaction component) were discarded for being highly correlated to other indicators (e.g. cropland area) or for not being useful to discriminate among SESs (e.g. indicators describing water use and energy use variables). For a detailed view of the results of the database screening, see the groups of correlated

indicators (figure S2.1), and the indicators eliminated throughout the screening process (table S1.1), both for being the least relevant indicators among the correlated ones, or the least relevant indicators from the database.

3.2. Map and characteristics of Andalusian SES archetypes

The 15 SES archetypes identified through the 29 key indicators generally represented compact territorial units (figures 4 and S2.2) which were classified in four main categories based on the dominant land cover and activities developed in the system. The ‘natural systems’ category (SES01–SES04) encompassed those SESs dominated by natural areas (>70%) distributed across some of the main mountain ranges of the region. These SESs hosted the largest proportion of natural protected area, and showed a high population mean age. The ‘mosaic systems’ category (SES05–SES07) represented mixed natural-agricultural landscapes with intermediate/below average crop production, a high rate of employments



and new employments in agriculture, and high desertification rates (in eastern mosaics SES05 and SES06). Within the ‘agricultural systems’ category, we found SESs dominated by either livestock (SES08 and SES09) or cropping activities (SES10–SES14).

Finally, the urban system (SES15) was the most densely populated, and showed the lowest population mean age and the highest mean income. For a more detailed description of each SES characteristics, please see tables S2.1 and S2.2.

3.3. Comparison of empirical and expert knowledge on the relevance of variables to characterize and map SESs

We identified nine groups of variables reflecting a gradient of synergy-disagreement between empirical and expert knowledge on their relevance to characterize SESs (figure 5). Generally, variables in group C (32.7%) showed the most remarkable synergies, as they (a) have been widely operationalized across contexts and scales to map SESs (see table S1.3), (b) are considered relevant by expert knowledge (table S1.3), and (c) were mostly useful in our study area (highlighted with ‘*’). These variables represented aspects of the social system, the ecological system and the interactions between them. A similar agreement was found for variables within group B (16.3%), although they have been only used for SES mapping in local and regional contexts.

Across the remaining groups, the synergies between empirical and expert knowledge were less conclusive, with diverse configurations that encompassed: variables not prioritized according to expert knowledge but used in preceding SES mapping (groups E and F, 20.4%); priority variables but not used in SES mapping (group A, 8.2%); non-priority and non-used variables (group D, 14.3%); variables used in SES mapping but not assessed through expert knowledge (group H and I, 4.1%); and variables that were neither assessed by expert knowledge nor used in SES mapping (group G, 4.1%).

4. Discussion

This paper provides an illustrative data-driven approach to identify key indicators for SES mapping based on a methodological routine of multivariate statistical analysis. Applying this routine to an integrative database of 86 indicators, we identified 29 key indicators to map 15 SES archetypes in Andalusia (Spain). These SESs archetypes revealed patterns of social-ecological interactions and trade-offs potentially relevant to guide an integrated territorial management. Most of the key variables identified in our study area (highlighted with ‘*’ in figure 5) were considered relevant by a previous expert assessment and used in preceding SES mapping studies. Overall, we provide new insights on the usefulness of variables to characterize SES that evidence the importance of integrating context-specific empirical assessments with general expert assessments to inform the identification of essential SES variables. More generally, our approach contributes to the growing field of archetype analysis in SES research.

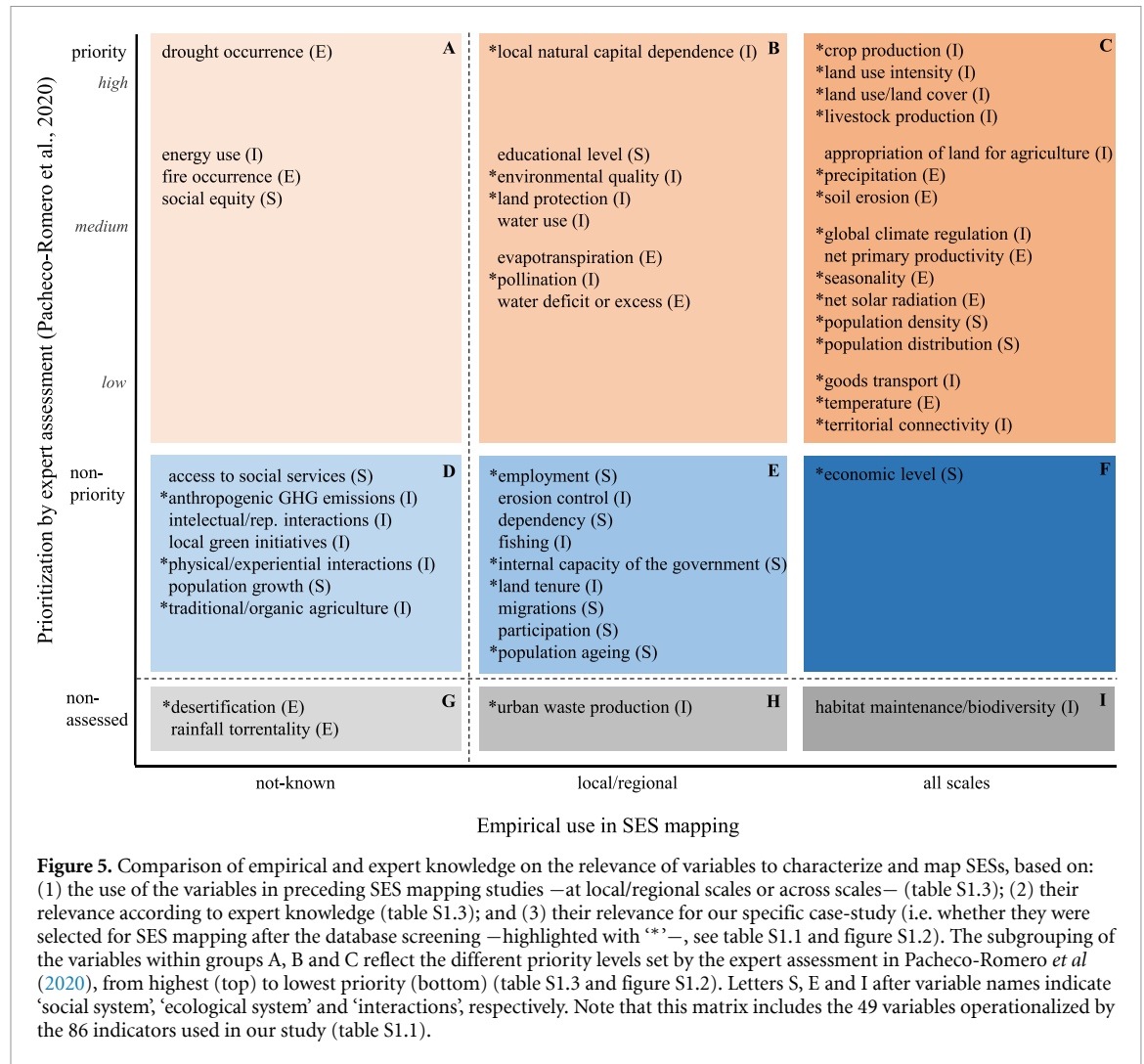
4.1. Key indicators reveal patterns of human–nature interactions across SES archetypes

The identified key indicators allowed to organize the social-ecological complexity of the study area,

reflecting a nested pattern of land sparing and land sharing strategies operating in the territory (Fischer *et al* 2008). Overall, the region was dominated by a land sparing pattern between agricultural and natural SESs. On the one hand, agricultural SESs (SES08–SES14), which occupied the most suitable topographical conditions, maximized the supply of provisioning ecosystem services (i.e. crops and livestock) at the expense of regulating ecosystem services (i.e. pollination and carbon sequestration). The dominance of these SESs evidenced the crucial role of agriculture in Andalusia for national and European food production (Malek and Verburg 2017, Ibarrola-Rivas *et al* 2020). On the other hand, natural SESs (SES01–SES04), mainly located in mountainous areas, showed a high supply of regulating ecosystem services at the expense of provisioning services. These SESs encompassed those areas less intensely transformed by human activity, which hosted the greatest rates of surface covered by natural or semi-natural ecosystems.

Below this general sparing pattern, agricultural and natural SESs represented in themselves distinct configurations of land sparing and land sharing strategies, respectively. For instance, within agricultural SESs (cropping systems), we found that the extent of the remaining natural surface was proportional to the level of intensification. Thus, the most intensified cropping systems of the region, located in eastern drylands (SES14), hosted the largest proportion of remaining natural surface of all cropping systems (c.a. 60%). Here, high-yield industrialized croplands targeted at maximum economic efficiency have been strongly segregated from natural habitats, which are protected from agricultural conversion (Piquer-Rodríguez *et al* 2012, Castro *et al* 2014, 2015). Achieving a sustainable intensification is one of the major challenges of these typical ‘frontier landscapes’ undergoing rapid land cover and use changes (Fischer *et al* 2008, Castro *et al* 2019, Martínez-Valderrama *et al* 2020b). Conversely, the least intensified cropping systems located along the Guadalquivir river valley (SES10 and SES11) hold the smallest proportion of natural surface of all SESs (c.a. 10%–12%, respectively). Here, management strategies should be targeted principally to protect the remaining patches of native vegetation, create connections among them, and increase landscape heterogeneity through agricultural diversification (Fischer *et al* 2008).

In contrast, natural SESs (SES01–SES04) hosted more wildlife-friendly practices, approaching a land sharing strategy. These SESs constitute cultural landscapes dominated by forests, shrublands and grasslands linked to traditional and extensive silvopastoral uses (e.g. wood harvesting for heating, cork harvesting, extensive livestock breeding, trashumance, hunting and fishing), local ecological knowledge, and high biodiversity rates (Oteros-Rozas *et al* 2013, Plieninger



et al 2015, Malek and Verburg 2017, Hartel *et al* 2018). However, land use abandonment is often one of the main threats of these SESs, where biodiversity conservation and landscape heterogeneity depends on the maintenance of traditional agricultural activities (Halada *et al* 2011, Plieninger *et al* 2015).

Finally, mosaic systems (SES05–SES07) reflected intermediate characteristics between land sparing and land sharing strategies. These SESs showed a more balanced supply of provisioning and regulating services, evidencing a moderate human pressure. Overall, mosaic systems represent multifunctional cultural landscapes throughout the Mediterranean basin, which integrate high biodiversity and cultural heritage values, maintaining an important role for regional food production (Malek and Verburg 2017).

4.2. Integrating empirical and expert knowledge: insights towards essential SES variables

The assessment of the 49 variables operationalized by the 86 indicators used in our analysis (tables S1.1 and S1.3) yielded new insights on key variables for SESs characterization and mapping. First, the universality

of the variables from group C (figure 5) to map SESs (e.g. Ellis and Ramankutty 2008, Václavík *et al* 2013, Martín-López *et al* 2017, Rocha *et al* 2020, Vallejos *et al* 2020), and the relevance reported by expert knowledge, could make them suitable to be considered as potential candidates to essential SES variables (Reyers *et al* 2017, Guerra *et al* 2019). In fact, these variables meet some criteria to be considered essential such as the representativeness for the system level, the adaptability to the context or data availability, and the feasibility to be derived and scaled to meet local, regional or global needs (Reyers *et al* 2017).

Second, the relevance of variables from group B for SES mapping seemed to be more dependent on the context or scale of analysis (e.g. Castellarini *et al* 2014, Hamann *et al* 2015, Queiroz *et al* 2015, Levers *et al* 2018), which can be also fundamental to represent the diversity and particularities of SESs for a specific region (Dressel *et al* 2018, Rocha *et al* 2020, Vallejos *et al* 2020). Indeed, one of the current challenges facing SES research is to identify which characteristics and patterns are more generalizable, and which are context-specific (Balvanera *et al* 2017, Magliocca *et al* 2018, Rocha *et al* 2019). Thus, lists of essential SES

variables should integrate both universal (i.e. group C variables) and context-dependent attributes, organized in hierarchical structures (Ostrom 2009, Cox *et al* 2020). Such hierarchy might contribute to connect locally relevant indicators with globally essential variables (Guerra *et al* 2019), facilitating a more flexible use of the list (Ostrom 2009, McGinnis and Ostrom 2014, Frey 2017). In turn, it can improve our capacity to obtain more comparable results, produce generalized knowledge, and foster theory development on SESs (Magliocca *et al* 2018, Meyfroidt *et al* 2018, Vaz *et al* 2021).

Third, the lack of agreement between empirical and expert knowledge in the remaining groups of variables yielded more uncertain conclusions that evidenced the need of further assessments. For instance, the high data availability could have promoted a wide use of the variable economic level (group F) through diverse indicators such as gross domestic product (Václavík *et al* 2013), household income (Hamann *et al* 2015), and income per capita (Martín-López *et al* 2017). However, its perception as non-priority might reflect the attempts from sustainability research to avoid assessing social well-being through economic indicators (Helne and Hirvilammi 2015, Costanza *et al* 2016, Fioramonti *et al* 2019). On the contrary, the lack of data availability could be limiting the use of suitable indicators to operationalize variables from group A in SESs mapping (Rocha *et al* 2020), which indeed were considered priority by expert knowledge. Our analysis also revealed variables that were crucial to map SESs in our study area, but that have not been assessed by experts, or used in previous SES mappings. For instance, desertification (group G) may not be appropriate in some environmental conditions but should be useful in other arid regions, if data were available (Martínez-Valderrama *et al* 2020a). Urban waste production (group H), although not previously assessed, was used for delineating local SESs in Andalusia (Martín-López *et al* 2017). Likewise, indicators related to biodiversity and habitat maintenance (group I) were widely used for SES mapping across scales, such as species richness (Václavík *et al* 2013, Hanspach *et al* 2016, Spake *et al* 2017), or distribution of ecoregions (Castellarini *et al* 2014, Levers *et al* 2018). Overall, these examples suggest that the systematic application of our data-driven approach could help to accumulate empirical knowledge on the most relevant variables across contexts and scales, and contribute to the current discussions for the development of reference lists of variables for SESs (e.g. Ostrom 2009, Frey 2017, Reyers *et al* 2017, Guerra *et al* 2019, Cox *et al* 2020, Pacheco-Romero *et al* 2020).

4.3. Advances in archetype analysis for SES research

Our approach contributes to the portfolio of methods used in archetype analysis (Sietz *et al* 2019) through

a data-driven methodological routine to guide the selection of indicators for the spatial mapping of SESs. As a major strength, the routine incorporates a machine learning technique (i.e. RF analysis) that assists the researcher with the screening of a database where the importance of the indicators to map SESs is not known *a priori*, thereby reducing the level of subjectivity. Thus, the coupling of the hierarchical clustering (HC) and RF allows the researcher to know first, the SESs of a certain study area, and second, the importance of the indicators to discriminate among such SESs. These analyses (HC and RF) are not able to produce all this information on their own: HC reveals SES clusters but not the importance of the indicators to discriminating them; and RF analysis needs a dependent variable (i.e. SES clusters in our case) to determine the role of the independent variables (i.e. social and ecological indicators) in generating such classification.

Our study also contributes to enhance the treatment of causality in archetype analysis through more representative thick descriptions (i.e. quantitative insights and detailed narratives of recurrent features) and causal factor configurations (i.e. patterns of archetype determinants) (Sietz *et al* 2019) by deriving: (a) key indicators to explain the social-ecological differences across units of study (e.g. municipalities) (figure 3), and (b) the impact of indicators in characterizing each SES cluster (table S2.2). Such causal factor configuration could be used as the starting point to set hypothesis and further qualitative analysis to identify the causal mechanisms driving human-nature relations. Thus, our approach can provide useful insights for the identification of archetypes as 'building-blocks' (e.g. recurrent causal mechanisms), which would help to achieve a more in-depth assessment of causality across case-studies (Sietz *et al* 2019). Given that identifying archetypes as 'building-blocks' can be a time-consuming endeavor, specially when having a high number of case-studies (e.g. 778 municipalities in our region), a prior identification of archetypes as typologies of cases enables obtaining a reduced set of homogeneous clusters to explore more easily the recurrent causal mechanisms shaping human-nature relations.

Finally, in terms of the scope and limitations of our approach, it is worth noting that the methodological routine constitutes just an example of a combination of well-known techniques, thus other analyses are possible and should be further tested. In addition, the selection of the optimal threshold to halt the screening process (i.e. the value of the MDA index of RF analysis) could need to be adjusted based on the specific data used in the analysis. Regarding the applicability of the routine, it can be particularly useful in areas with high data availability, although the time inconsistency of the indicators may still challenge the representativeness of the results (e.g. Dittrich *et al* 2017, Martín-López *et al* 2017, Dressel

et al 2018). Ideally, maps of SES archetypes should be based on the most recent data, and integrate average time series for those indicators with high temporal variability. However, given that data-availability varies across territories and variables can be operationalized through multiple indicators (whose relevance depend on the context and data quality), accumulating knowledge on the most relevant indicators to map and characterize SESs throughout regions is fundamental to improve their long-term monitoring.

5. Conclusions

This study provides a repeatable data-driven methodological routine to assist the selection of the most relevant indicators to map the diversity of SES archetypes in a region. The application of this routine to a wide database of potentially relevant indicators for Andalusia (Spain) showed substantial differences in their usefulness for discriminating among SESs. Specifically, this method can foster the potential of SES mapping to contribute to place-based social-ecological research aims, by developing: (a) more comparable SES mappings based on a more objective selection of the key indicators leading SES distribution, (b) more effective operationalizations of SES frameworks and reference lists of variables, and (c) generalizable empirical knowledge on the most relevant variables to characterize SESs across contexts and scales that guides the identification of essential variables for SESs. Our results evidence the importance of combining insights from expert and empirical assessments in the identification of essential variables, as well as one of the potential challenges in the development of reference lists of variables for SESs: the integration of both universally and context-specific relevant variables. More generally, this study contributes to a better understanding of causal factor configurations in SES archetype analysis from a *top-down* perspective (i.e. as typologies of cases), which may facilitate the development of more in-depth assessments of the archetypical causal mechanisms (i.e. *bottom-up*, as ‘building blocks’) determining the diversity of social-ecological interactions across landscapes.

Data availability statement

The data that support the findings of this study are available upon reasonable request from the authors.

Acknowledgments

We thank R Romero-Calcerrada and J M Requena-Mullor for helpful discussions, and three anonymous reviewers for their constructive suggestions to improve this paper. We also thank the Spanish Ministry of Economy and Business (Project CGL2014-61610-EXP) for the financial support, as well as the

Spanish Ministry of Education for the FPU Predoctoral Fellowship of MPR (FPU14/06782) and MTTG (16/02214). MPR gratefully acknowledges funding from Universidad de Almería for a research stay at the Laboratory of Regional Analysis and Remote Sensing (LART) of University of Buenos Aires to develop this study. This research was done within the LTSER Platforms of the Arid Iberian South East—Spain (LTER_EU_ES_027) and Sierra Nevada/Granada (ES-SNE)—Spain (LTER_EU_ES_010), and contributes to the Global Land Programme.

ORCID iDs

Manuel Pacheco-Romero  <https://orcid.org/0000-0002-9914-4009>

María Vallejos  <https://orcid.org/0000-0002-1749-6458>

José M Paruelo  <https://orcid.org/0000-0002-8784-9431>

Domingo Alcaraz-Segura  <https://orcid.org/0000-0001-8988-4540>

M Trinidad Torres-García  <https://orcid.org/0000-0003-2244-1758>

María J. Salinas-Bonillo  <https://orcid.org/0000-0001-6931-6677>

Javier Cabello  <https://orcid.org/0000-0002-5123-964X>

References

- Alessa L, Kliskey A and Brown G 2008 Social–ecological hotspots mapping: a spatial approach for identifying coupled social–ecological space *Landscape Urban Plan.* **85** 27–39
- Archer K J and Kimes R V 2008 Empirical characterization of random forest variable importance measures *Comput. Stat. Data Anal.* **52** 2249–60
- Balvanera P *et al* 2017 Interconnected place-based social–ecological research can inform global sustainability *Curr. Opin. Environ. Sustain.* **29** 1–7
- Balvanera P, Brauman K A, Cord A F, Drakou E G, Geijzendorffer I R, Karp D S, Martín-López B, Mwampamba T H and Schröter M 2022 Essential ecosystem service variables for monitoring progress towards sustainability *Curr. Opin. Environ. Sustain.* **54** 101152
- Breiman L 2001 Random forests *Mach. Learn.* **45** 5–32
- Castellarini F *et al* 2014 A social-ecological spatial framework for policy design towards sustainability: Mexico as a study case *Investigación ambiental Ciencia y política pública* **6** 45–59
- Castro A J *et al* 2019 Six collective challenges for sustainability of Almería greenhouse horticulture *Int. J. Environ. Res. Public Health* **16** 4097
- Castro A J, Martín-López B, López E, Plieninger T, Alcaraz-Segura D, Vaughn C C and Cabello J 2015 Do protected areas networks ensure the supply of ecosystem services? Spatial patterns of two nature reserve systems in semi-arid Spain *Appl. Geogr.* **60** 1–9
- Castro A J, Verburg P H, Martín-López B, Garcia-Llorente M, Cabello J, Vaughn C C and López E 2014 Ecosystem service trade-offs from supply to social demand: a landscape-scale spatial analysis *Landscape Urban Plan.* **132** 102–10
- Costanza R, Daly L, Fioramonti L, Giovannini E, Kubiszewski I, Mortensen L F, Pickett K E, Ragnarsdóttir K V, De Vogli R and Wilkinson R 2016 Modelling and measuring sustainable wellbeing in connection with the UN sustainable development goals *Ecol. Econ.* **130** 350–5

- Cox M *et al* 2020 From concepts to comparisons: a resource for diagnosis and measurement in social-ecological systems *Environ. Sci. Policy* **107** 211–6
- de Vos A, Biggs R and Preiser R 2019 Methods for understanding social-ecological systems: a review of place-based studies *Ecol. Soc.* **24** 16
- Dittrich A, Seppelt R, Václavík T and Cord A F 2017 Integrating ecosystem service bundles and socio-environmental conditions—a national scale analysis from Germany *Ecosyst. Serv.* **28** 273–82
- Dormann C F *et al* 2013 Collinearity: a review of methods to deal with it and a simulation study evaluating their performance *Ecography* **36** 27–46
- Dressel S, Ericsson G and Sandström C 2018 Mapping social-ecological systems to understand the challenges underlying wildlife management *Environ. Sci. Policy* **84** 105–12
- Eisenack K, Villamayor-Tomas S, Epstein G, Kimmich C, Magliocca N, Manuel-Navarrete D, Oberlack C, Roggero M and Sietz D 2019 Design and quality criteria for archetype analysis *Ecol. Soc.* **24** 6
- Ellis E C and Ramankutty N 2008 Putting people in the map: anthropogenic biomes of the world *Front. Ecol. Environ.* **6** 439–47
- Fioramonti L, Coscieme L and Mortensen L F 2019 From gross domestic product to wellbeing: how alternative indicators can help connect the new economy with the sustainable development goals *Anthropocene Rev.* **6** 207–22
- Fischer J *et al* 2008 Should agricultural policies encourage land sparing or wildlife-friendly farming? *Front. Ecol. Environ.* **6** 380–5
- Frey U J 2017 A synthesis of key factors for sustainability in social-ecological systems *Sustain. Sci.* **12** 507–19
- Guerra C A *et al* 2019 Finding the essential: improving conservation monitoring across scales *Global Ecol. Conserv.* **18** e00601
- Halada L, Evans D, Romão C and Petersen J-E 2011 Which habitats of European importance depend on agricultural practices? *Biodivers. Conserv.* **20** 2365–78
- Hamann M, Biggs R and Reyers B 2015 Mapping social-ecological systems: identifying 'green-loop' and 'red-loop' dynamics based on characteristic bundles of ecosystem service use *Glob. Environ. Change* **34** 218–26
- Han H, Guo X and Yu H 2016 Variable selection using mean decrease accuracy and mean decrease gini based on random forest 2016 7th IEEE Int. Conf. on Software Engineering and Service Science (ICSESS) (IEEE) pp 219–24
- Hanspach J, Loos J, Dorresteijn I, Abson D J and Fischer J 2016 Characterizing social-ecological units to inform biodiversity conservation in cultural landscapes *Divers. Distrib.* **22** 853–64
- Hartel T, Fagerholm N, Torralba M, Balázsi Á and Plieninger T 2018 Forum: social-ecological system archetypes for European rangelands *Rangeland Ecol. Manage.* **71** 536–44
- Helne T and Hirvilammi T 2015 Wellbeing and sustainability: a relational approach *Sustain. Dev.* **23** 167–75
- Holzer J M, Adamescu M C, Bonet-García F J, Díaz-Delgado R, Dick J, Grove J M, Rozzi R and Orenstein D E 2018 Negotiating local versus global needs in the international long term ecological research network's socio-ecological research agenda *Environ. Res. Lett.* **13** 105003
- Ibarrola-Rivas M-J, Castro A J, Kastner T, Nonhebel S and Turkelboom F 2020 Telecoupling through tomato trade: what consumers do not know about the tomato on their plate *Glob. Sustain.* **3** E7
- Lazzari N, Becerro M A, Sanabria-Fernandez J A and Martín-López B 2019 Spatial characterization of coastal marine social-ecological systems: insights for integrated management *Environ. Sci. Policy* **92** 56–65
- Lehmann A, Masò J, Nativi S and Giuliani G 2020 Towards integrated essential variables for sustainability *Int. J. Digital Earth* **13** 158–65
- Levers C *et al* 2018 Archetypical patterns and trajectories of land systems in Europe *Reg. Environ. Change* **18** 715–32
- Magliocca N R, Ellis E C, Allington G R H, de Bremond A, Dell'Angelo J, Mertz O, Messerli P, Meyfroidt P, Seppelt R and Verburg P H 2018 Closing global knowledge gaps: producing generalized knowledge from case studies of social-ecological systems *Glob. Environ. Change* **50** 1–14
- Malek Ž and Verburg P 2017 Mediterranean land systems: representing diversity and intensity of complex land systems in a dynamic region *Landscape Urban Plan.* **165** 102–16
- Martín-López B, Palomo I, García-Llorente M, Iniesta-Arandia I, Castro A J, García Del Amo D, Gómez-Baggethun E and Montes C 2017 Delineating boundaries of social-ecological systems for landscape planning: a comprehensive spatial approach *Land Use Policy* **66** 90–104
- Martínez-Valderrama J, Guirado E and Maestre F T 2020a Desertifying deserts *Nat. Sustain.* **3** 572–5
- Martínez-Valderrama J, Guirado E and Maestre F T 2020b Discarded food and resource depletion *Nat. Food* **1** 660–2
- McGinnis M and Ostrom E 2014 Social-ecological system framework: initial changes and continuing challenges *Ecol. Soc.* **19** 30
- Meyfroidt P *et al* 2018 Middle-range theories of land system change *Glob. Environ. Change* **53** 52–67
- Mirtl M *et al* 2018 Genesis, goals and achievements of long-term ecological research at the global scale: a critical review of ILTER and future directions *Sci. Total Environ.* **626** 1439–62
- Oberlack C *et al* 2019 Archetype analysis in sustainability research: meanings, motivations, and evidence-based policy making *Ecol. Soc.* **24** 26
- Ostrom E 2009 A general framework for analyzing sustainability of social-ecological systems *Science* **325** 419–22
- Oteros-Rozas E, Martín-López B, López C A, Palomo I and González J A 2013 Envisioning the future of transhumant pastoralism through participatory scenario planning: a case study in Spain *Rangeland J.* **35** 251–72
- Pacheco-Romero M, Alcaraz-Segura D, Vallejos M and Cabello J 2020 An expert-based reference list of variables for characterizing and monitoring social-ecological systems *Ecol. Soc.* **25** 1
- Pacheco-Romero M, Kuemmerle T, Levers C, Alcaraz-Segura D and Cabello J 2021 Integrating inductive and deductive analysis to identify and characterize archetypical social-ecological systems and their changes *Landscape Urban Plan.* **215** 104199
- Piquer-Rodríguez M, Kuemmerle T, Alcaraz-Segura D, Zurita-Milla R and Cabello J 2012 Future land use effects on the connectivity of protected area networks in southeastern Spain *J. Nat. Conserv.* **20** 326–36
- Plieninger T, Hartel T, Martín-López B, Beaufoy G, Bergmeier E, Kirby K, Montero M J, Moreno G, Oteros-Rozas E and Van Uytvanck J 2015 Wood-pastures of Europe: geographic coverage, social-ecological values, conservation management, and policy implications *Biol. Conserv.* **190** 70–79
- Queiroz C, Meacham M, Richter K, Norström A V, Andersson E, Norberg J and Peterson G 2015 Mapping bundles of ecosystem services reveals distinct types of multifunctionality within a Swedish landscape *AMBIO* **44** 89–101
- Quintas-Soriano C, García-Llorente M, Norström A, Meacham M, Peterson G and Castro A J 2019 Integrating supply and demand in ecosystem service bundles characterization across Mediterranean transformed landscapes *Landscape Ecol.* **34** 1619–33
- R Core Team 2018 *R: A Language and Environment for Statistical Computing* (Vienna: R Foundation for Statistical Computing) p 2012
- Reyers B, Stafford-Smith M, Erb K-H, Scholes R J and Selomane O 2017 Essential variables help to focus sustainable development goals monitoring *Curr. Opin. Environ. Sustain.* **26–27** 97–105

- Rocha J, Baraibar M, Deutsch L, de Bremond A, Oestreicher J S, Rositano F and Gelabert C 2019 Toward understanding the dynamics of land change in Latin America: potential utility of a resilience approach for building archetypes of land-systems change *Ecol. Soc.* **24** 17
- Rocha J, Malmborg K, Gordon L, Brauman K and DeClerck F 2020 Mapping social-ecological systems archetypes *Environ. Res. Lett.* **15** 034017
- Sietz D, Frey U, Roggero M, Gong Y, Magliocca N, Tan R, Janssen P and Václavík T 2019 Archetype analysis in sustainability research: methodological portfolio and analytical frontiers *Ecol. Soc.* **24** 34
- Spake R *et al* 2017 Unpacking ecosystem service bundles: towards predictive mapping of synergies and trade-offs between ecosystem services *Glob. Environ. Change* **47** 37–50
- Václavík T, Langerwisch F, Cotter M, Fick J, Häuser I, Hotes S, Kamp J, Settele J, Spangenberg J H and Seppelt R 2016 Investigating potential transferability of place-based research in land system science *Environ. Res. Lett.* **11** 095002
- Václavík T, Lautenbach S, Kuemmerle T and Seppelt R 2013 Mapping global land system archetypes *Glob. Environ. Change* **23** 1637–47
- Vallejos M, Aguiar S, Baldi G, Mastrángelo M E, Gallego F, Pacheco-Romero M, Alcaraz-Segura D and Paruelo J M 2020 Social-ecological functional types: connecting people and ecosystems in the argentine chaco *Ecosystems* **23** 471–84
- Vaz A S, Selomane O, Jones L, Gosal A S, Ziv G, Muller-Karger F E, Montes E and Vallejos M 2021 The journey to monitoring ecosystem services: are we there yet? *Ecosyst. Serv.* **50** 101313
- Ward J H 1963 Hierarchical grouping to optimize an objective function *J. Am. Stat. Assoc.* **58** 236–44