

Comparison between Energy-Plus Typical Meteorological Year and 15-years long-term data for Montevideo

G. Giacosa, R. Alonso-Suárez

Laboratorio de Energía Solar (LES, <http://les.edu.uy>)
Universidad de la República, Uruguay

EPS TMY evaluation (Montevideo)

In this document we present a preliminary evaluation of the Typical Meteorological Years (TMY) dataset for Montevideo city, Uruguay, that is contained in the EnergyPlus building design software. Global horizontal irradiation (GHI), mean, maximum and minimum temperature, relative humidity and atmospheric pressure is considered. The time-series for these variables are compared with long-term data from the period between the years 2000 and 2015. Temperature, relative humidity and atmospheric pressure were measured in ground at a high-quality national conventional meteorological station in the Carrasco area (Montevideo). Global horizontal irradiation is estimated by satellite through a low-uncertainty model developed locally at the national Solar Energy Laboratory (LES, UdelaR) which uses visible channel images from the GOES-East satellite. This model has been proposed and evaluated in [1, 2, 3, 4].

The comparison is presented in the following way for each of the six variables:

- The daily Cumulative Distribution Function (CDF) for each month of the EPS TMY is compared with the daily CDF obtained from the 15-years records (long-term CDF).
- Monthly comparison is presented in a bar plot showing the EPS TMY monthly mean and the 15-years data monthly mean.
- Differences between these monthly averages are presented in bar plot in absolute and relative terms.
- FS statistic is calculated respect to long-term CDF for each month. This statistic is presented for each variable separately in each of the following Sections.

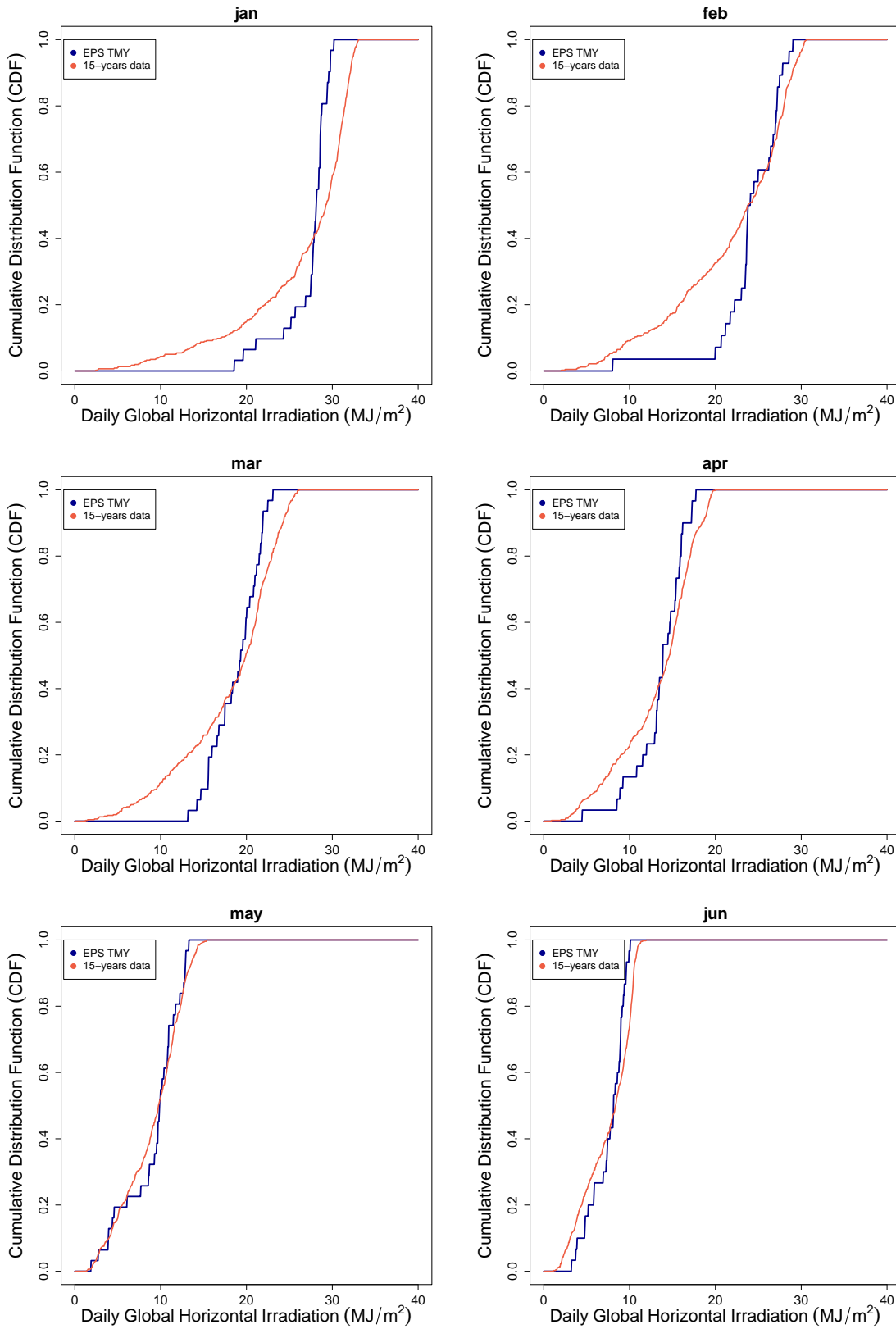
Weighted FS statistic

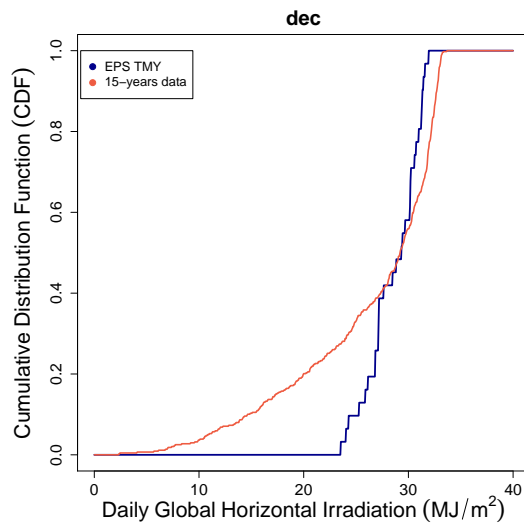
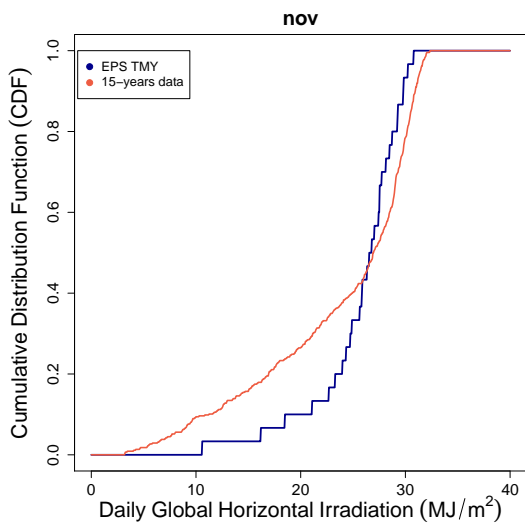
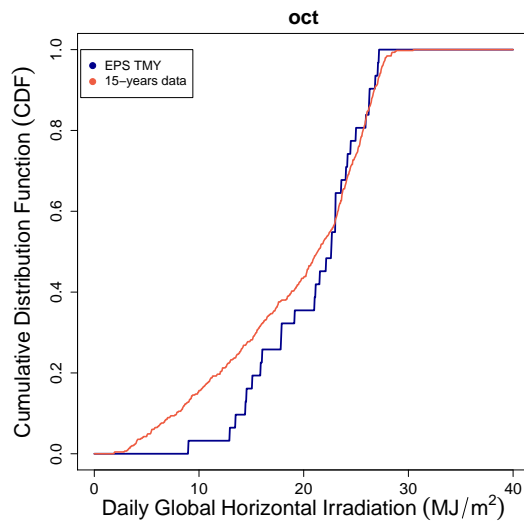
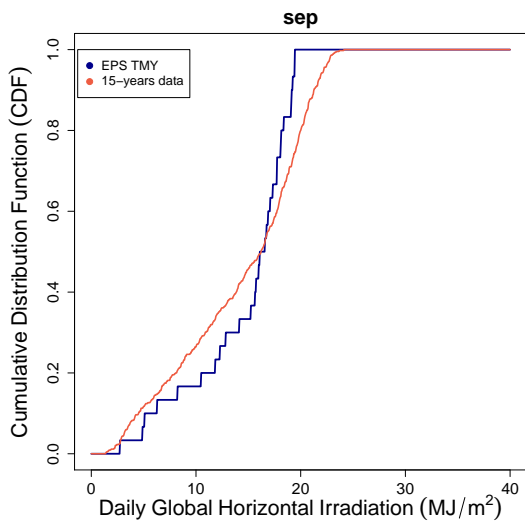
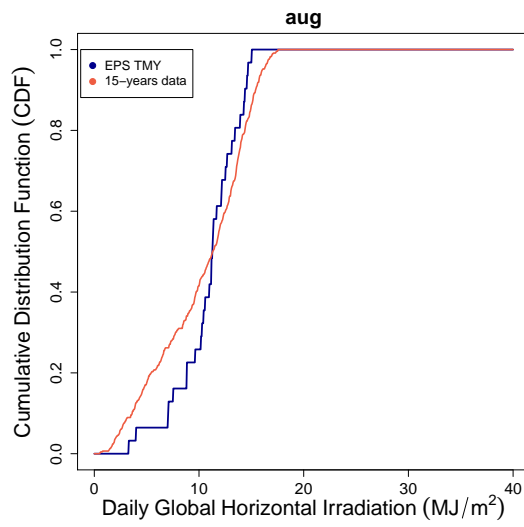
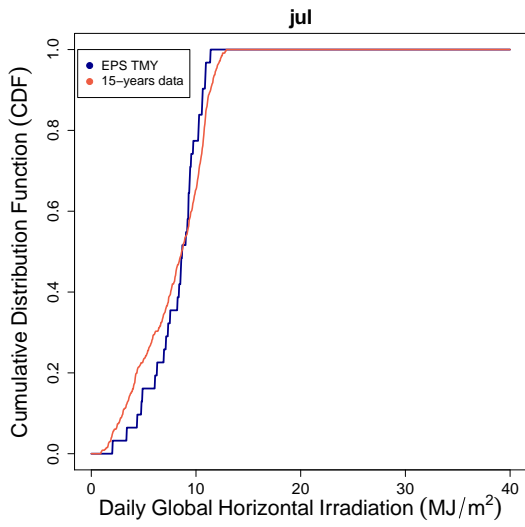
To obtain an unique FS statistic for each month a weighting law shall be used. In the following Table, the unique FS statistic is presented for the EPS TMY and the Uruguay's TMY (AMTUes) [5] using the same weighting law that was used in the AMTUes. These weights are: 6/12 for global horizontal irradiation, 2/12 for mean temperature y 1/12 for maximum and minimum temperature, relative humidity and atmospheric pressure.

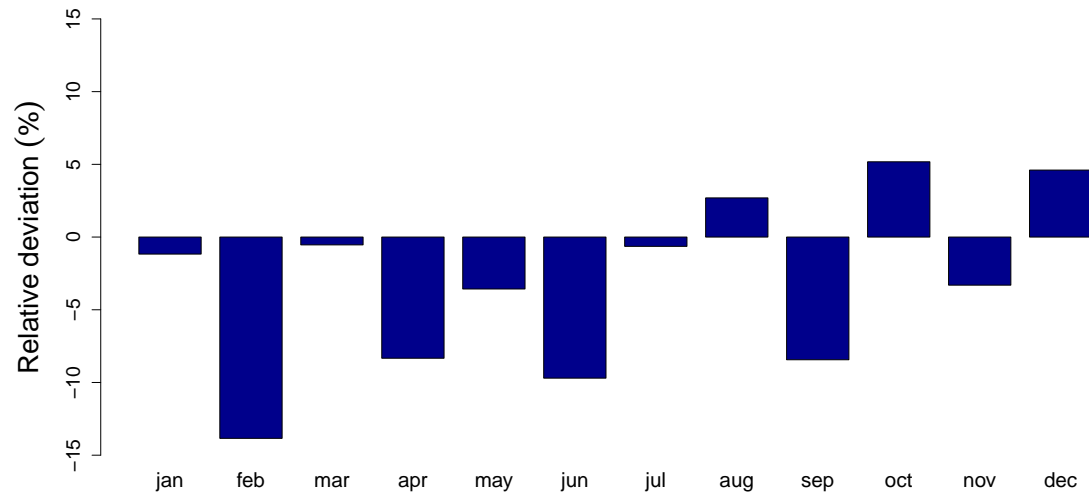
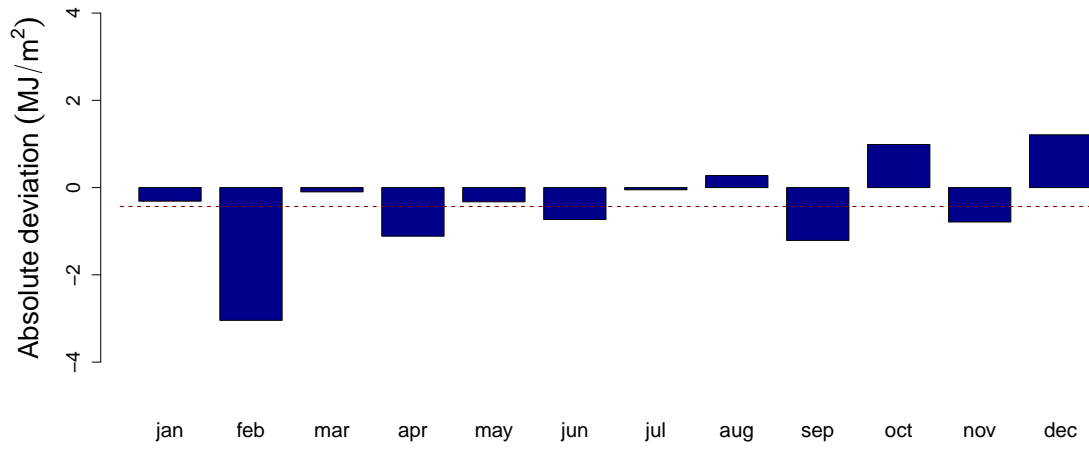
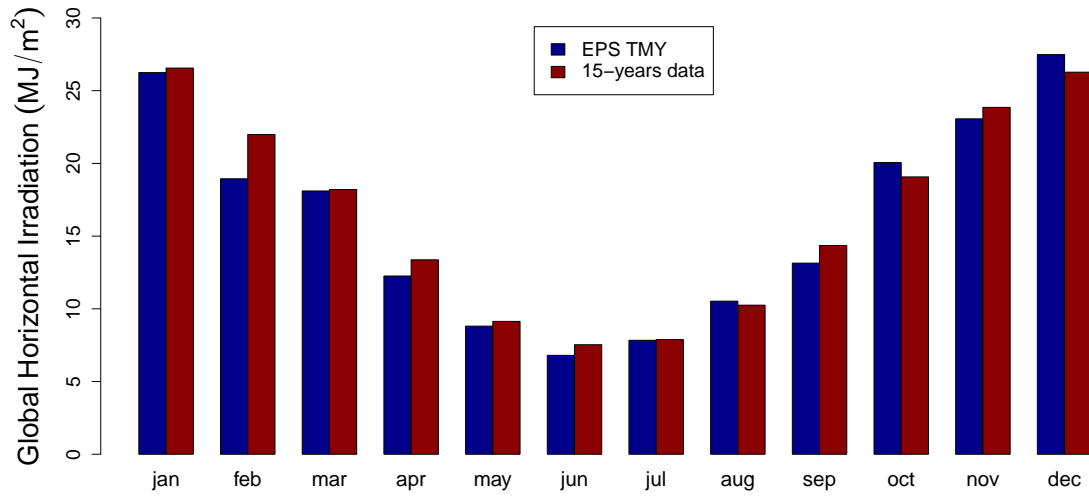
FS	jan	feb	mar	apr	may	jun	jul	aug	sep	oct	nov	dec
EPL	0.131	0.104	0.104	0.100	0.079	0.111	0.089	0.107	0.108	0.078	0.100	0.118
AMTU	0.053	0.058	0.048	0.049	0.043	0.040	0.034	0.056	0.046	0.051	0.048	0.058

Montevideo, March 20, 2018

1 Global Horizontal Irradiation

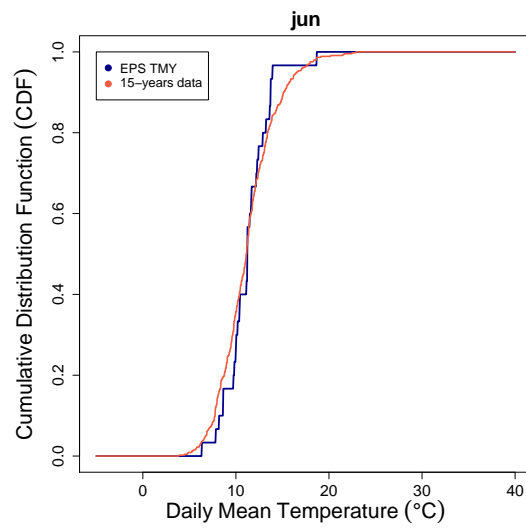
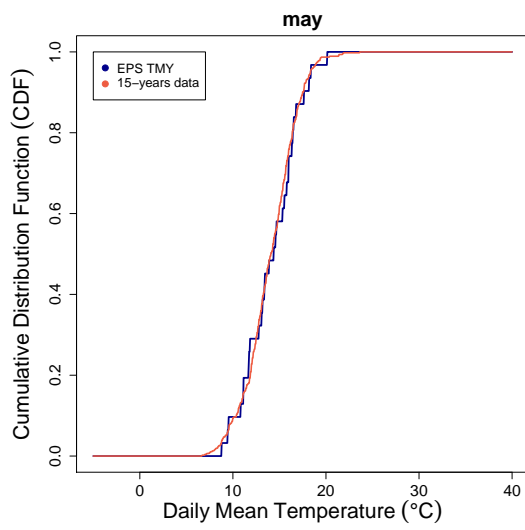
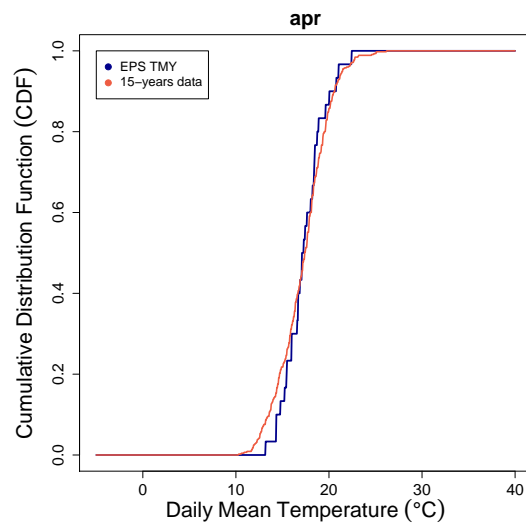
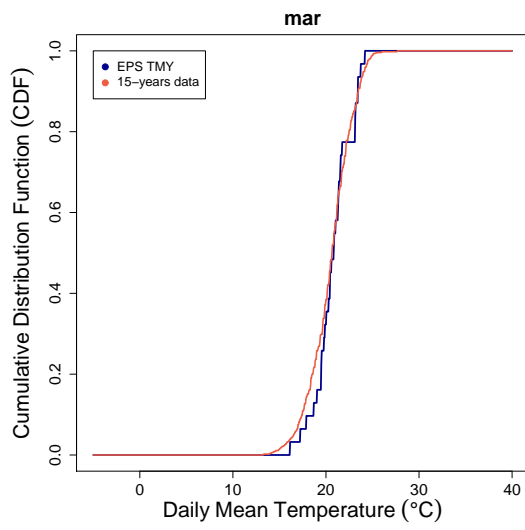
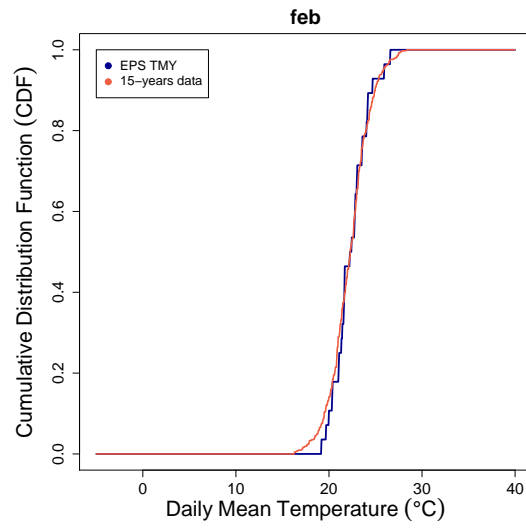
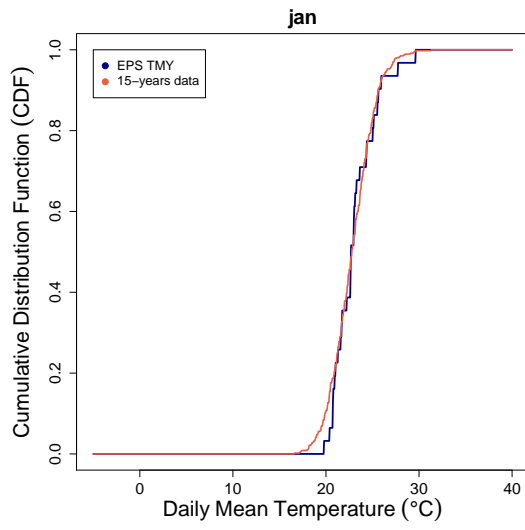


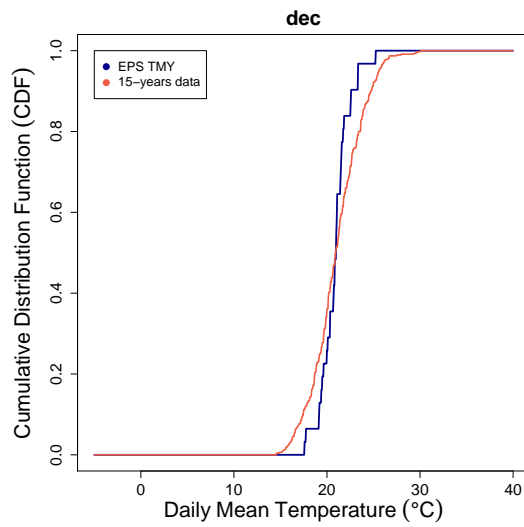
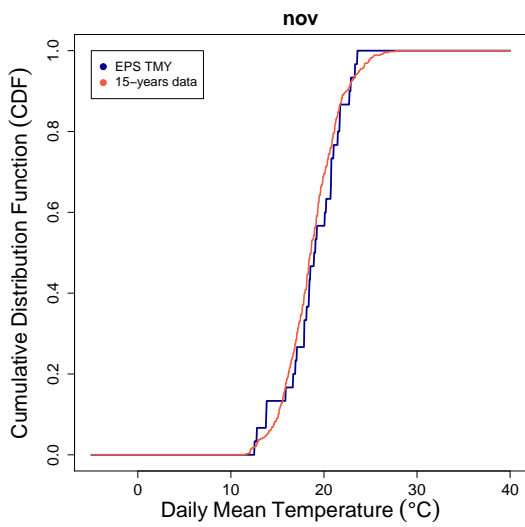
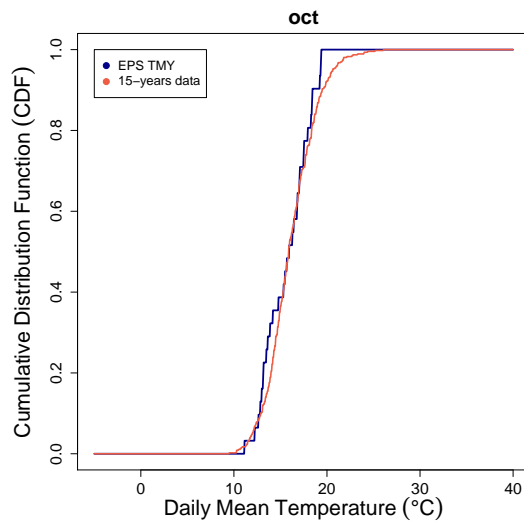
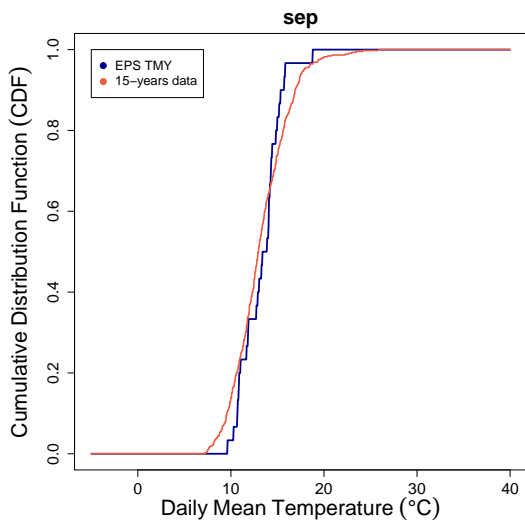
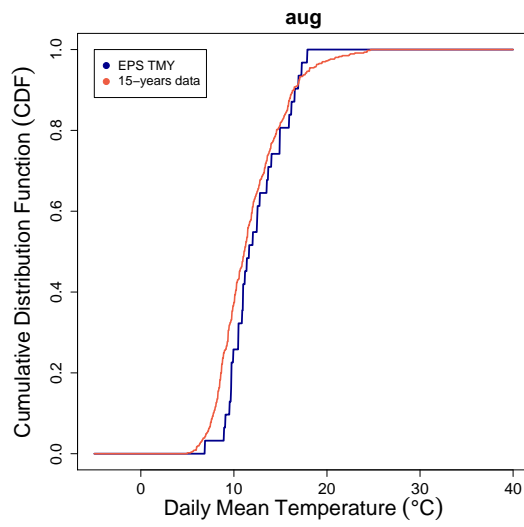
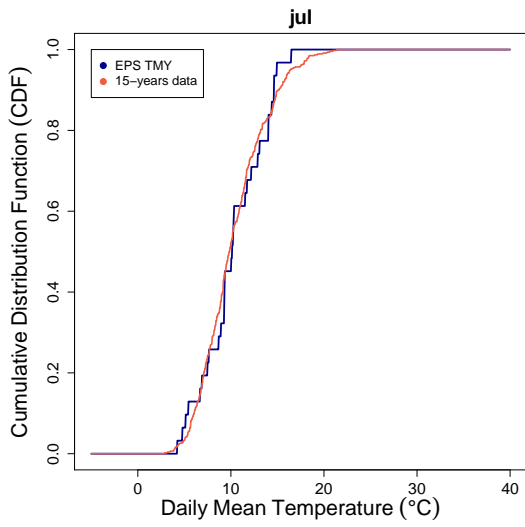


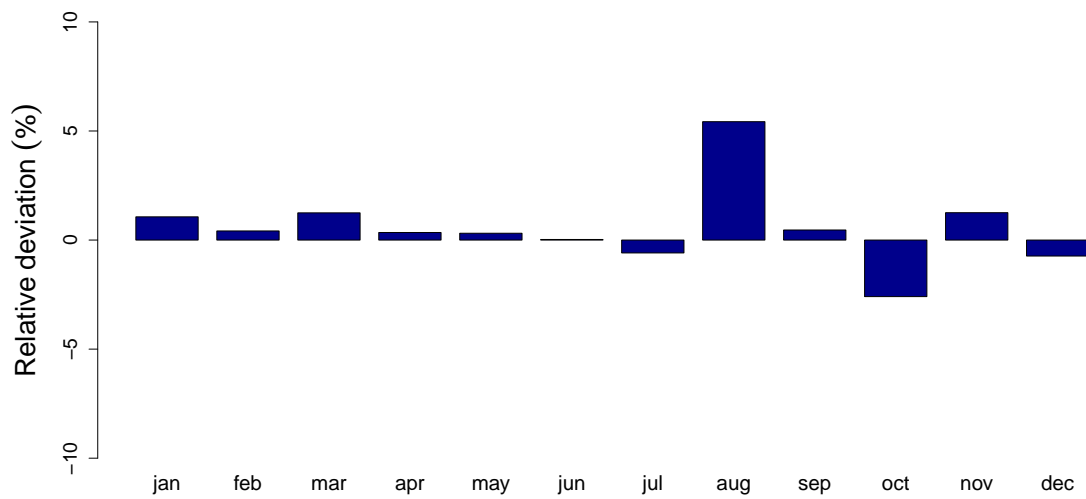
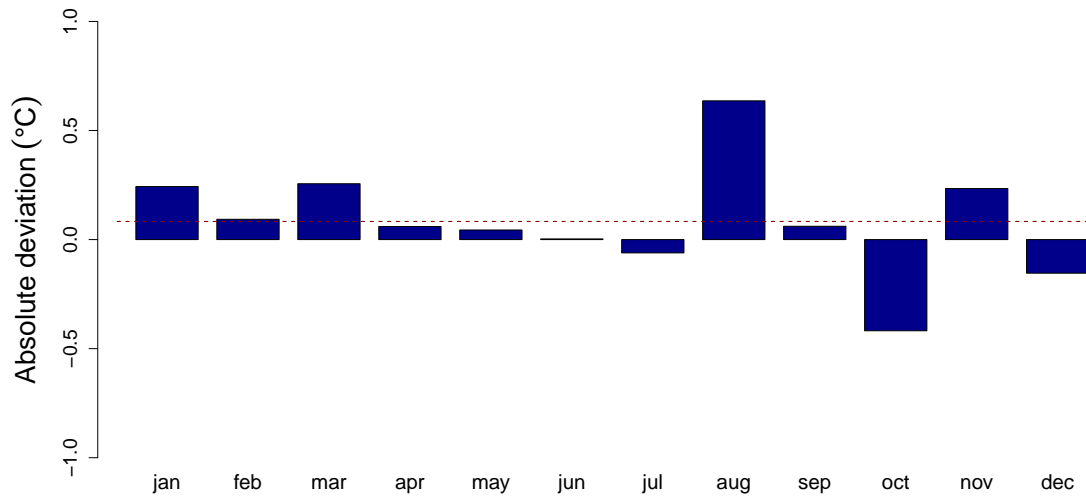
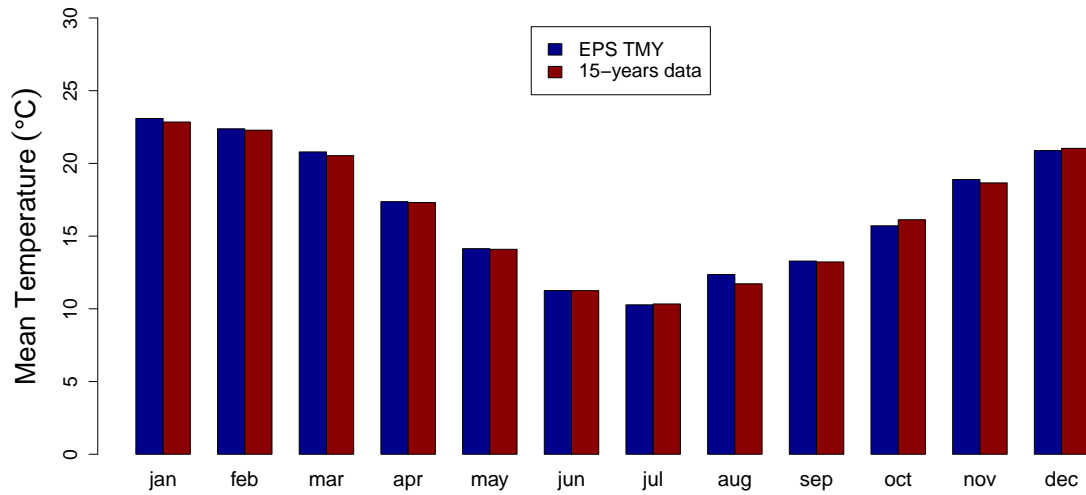


FS	jan	feb	mar	apr	may	jun	jul	aug	sep	oct	nov	dec
EPL	0.1834	0.1110	0.1098	0.0940	0.0479	0.1078	0.0816	0.0969	0.0933	0.0652	0.1121	0.1313
AMTU	0.0317	0.0516	0.0501	0.0503	0.0388	0.0236	0.0268	0.0468	0.0277	0.0391	0.0468	0.0459

2 Mean Temperature

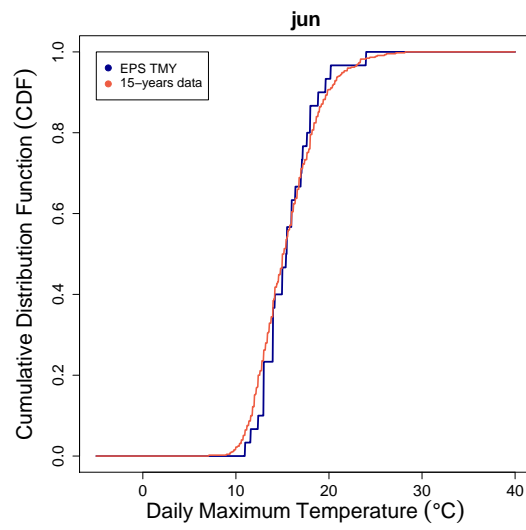
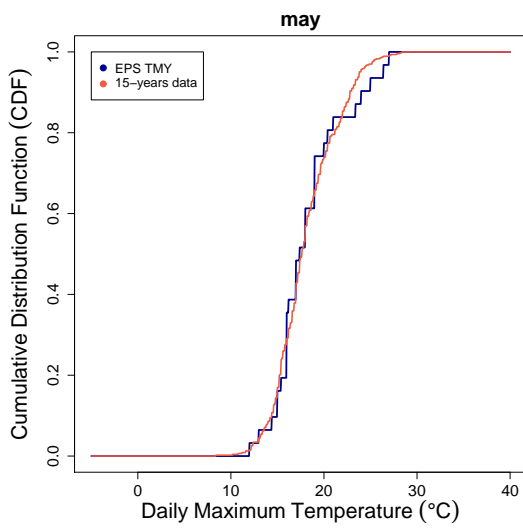
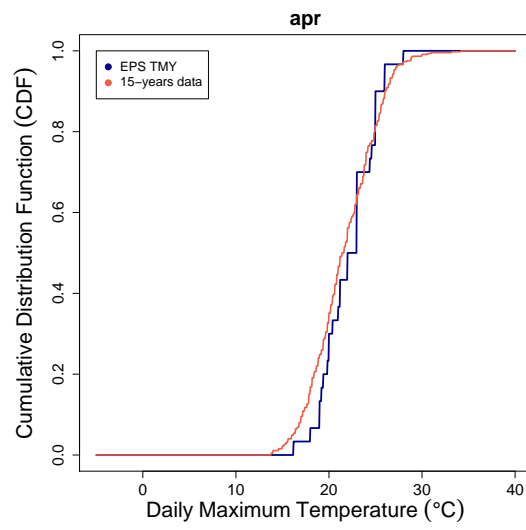
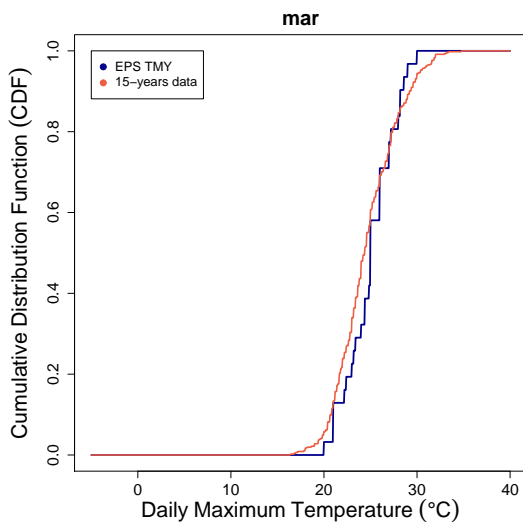
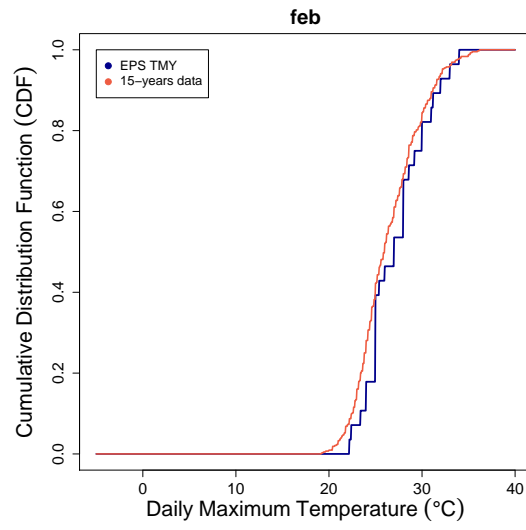
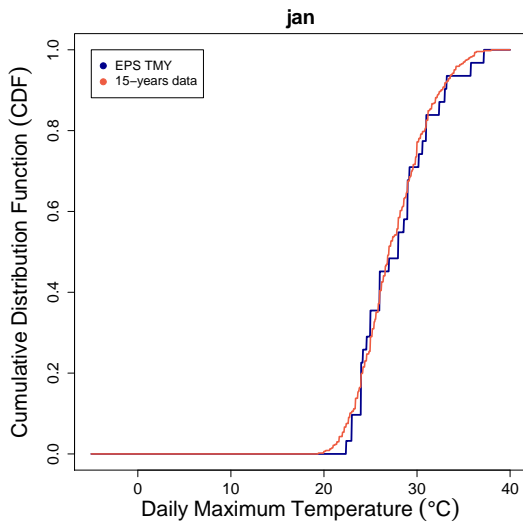


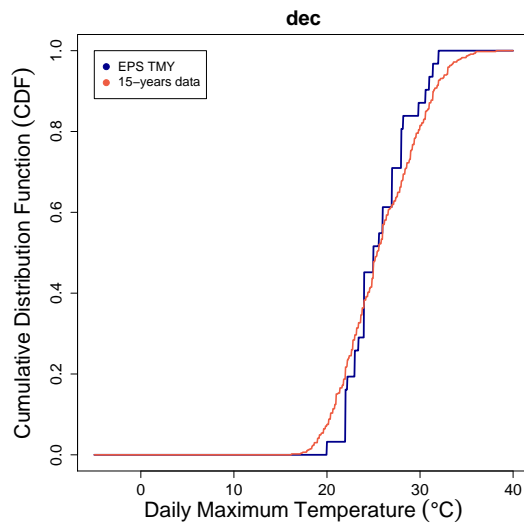
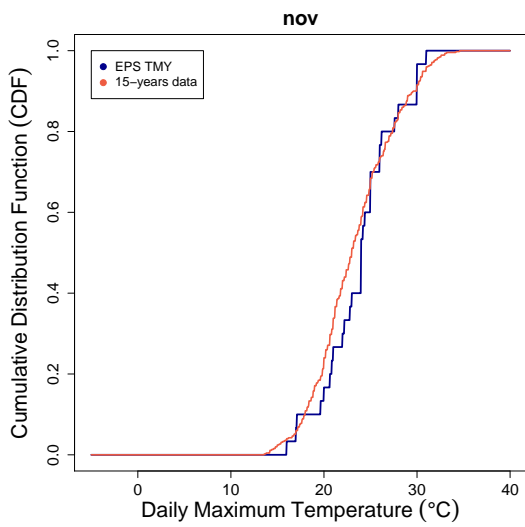
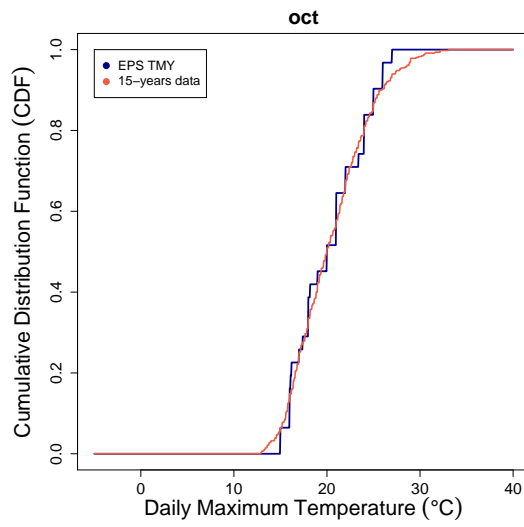
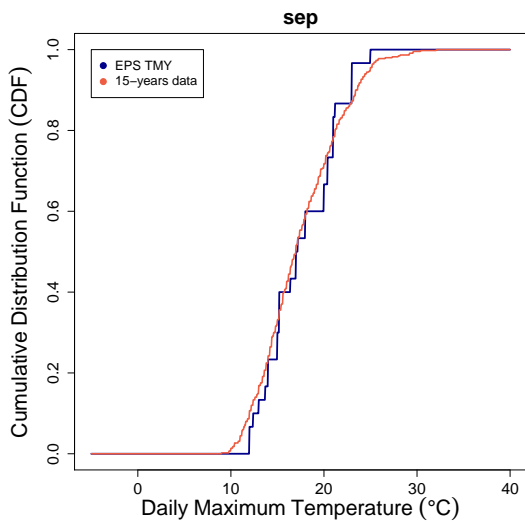
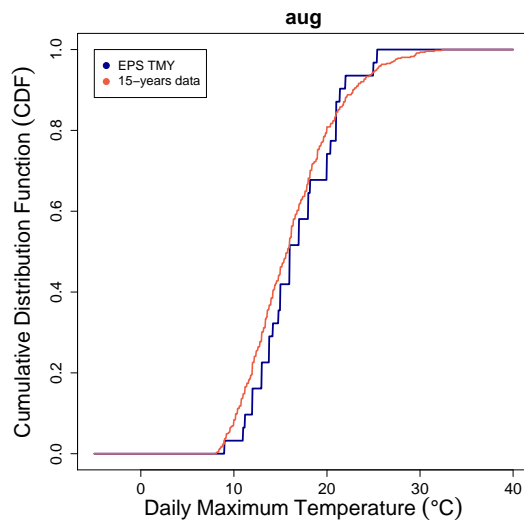
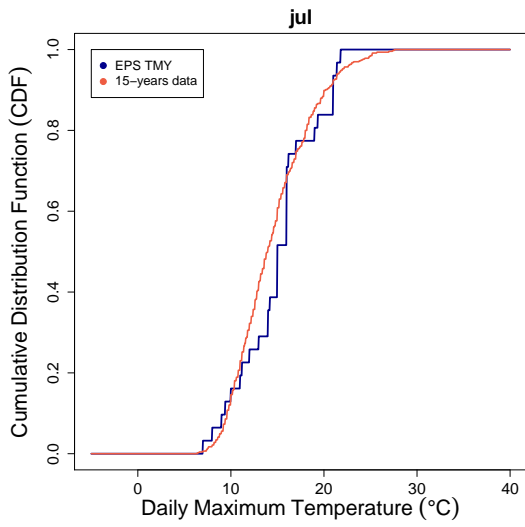


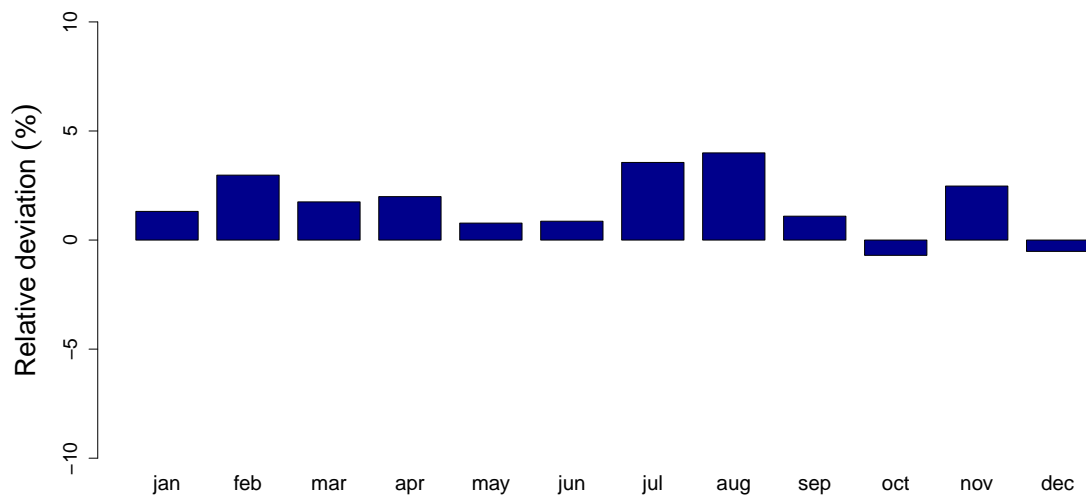
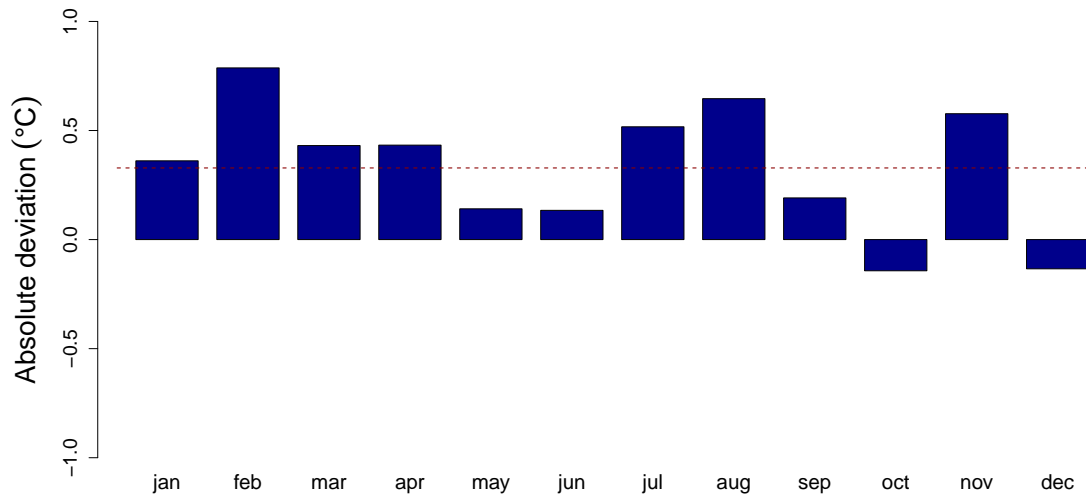
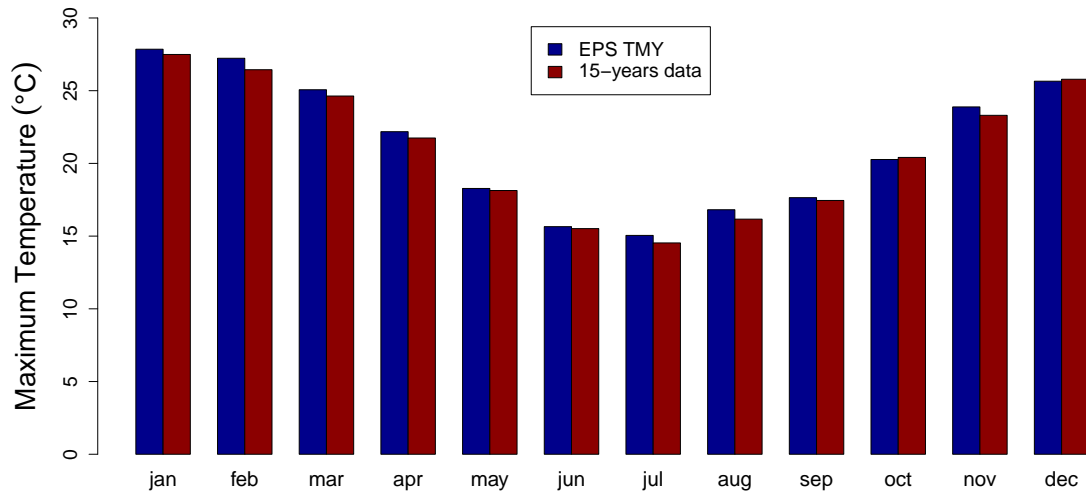


FS	jan	feb	mar	apr	may	jun	jul	aug	sep	oct	nov	dec
EPL	0.0327	0.0347	0.0353	0.0473	0.0230	0.0559	0.0343	0.0706	0.0663	0.0535	0.0438	0.1015
AMTU	0.0886	0.0788	0.0452	0.0562	0.0338	0.0650	0.0338	0.0515	0.0728	0.0646	0.0459	0.0968

3 Maximum Temperature

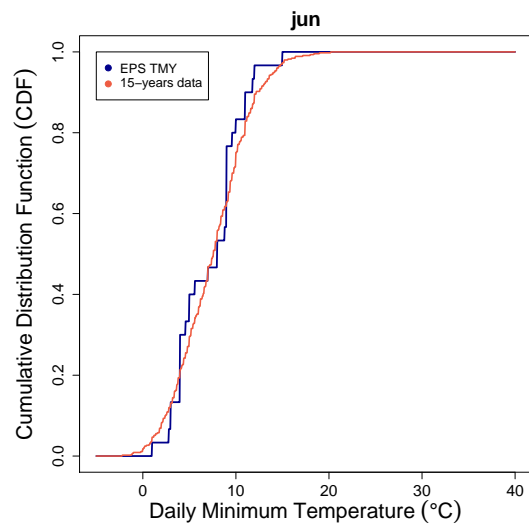
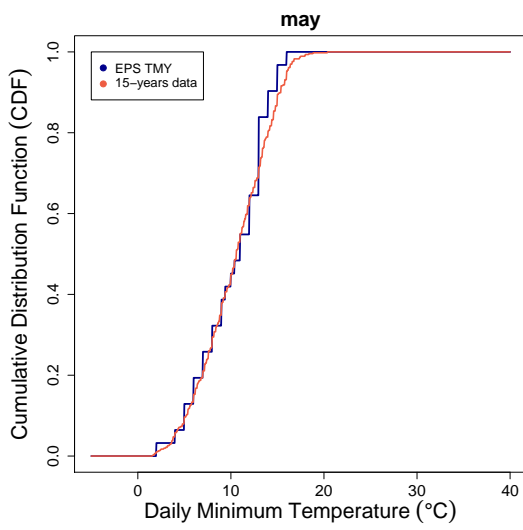
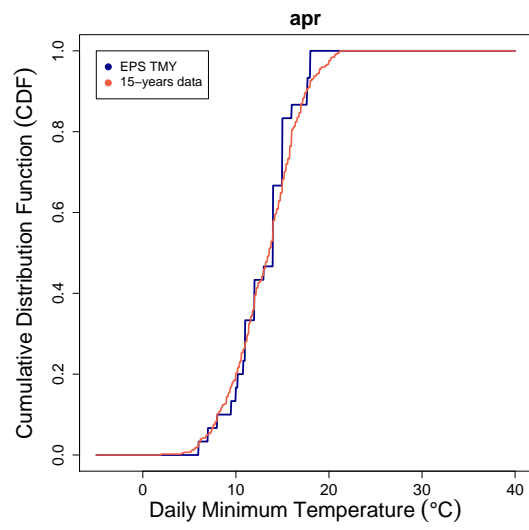
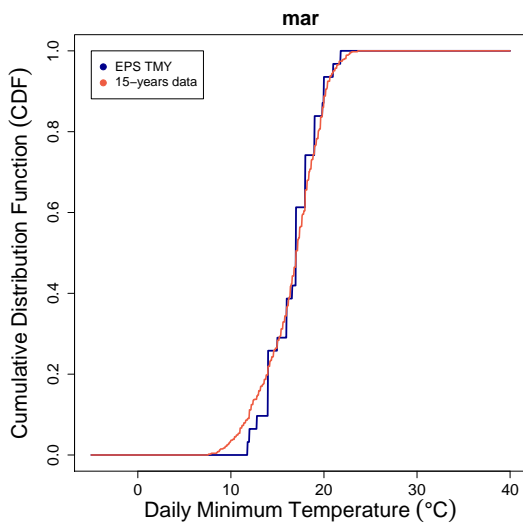
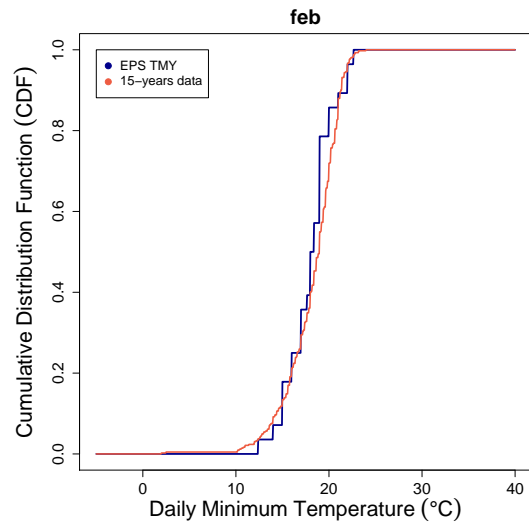
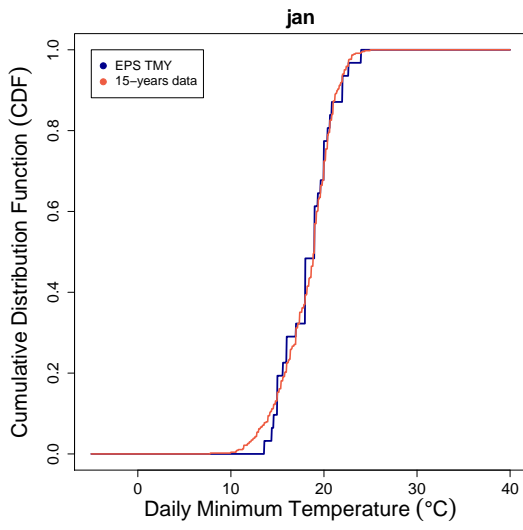


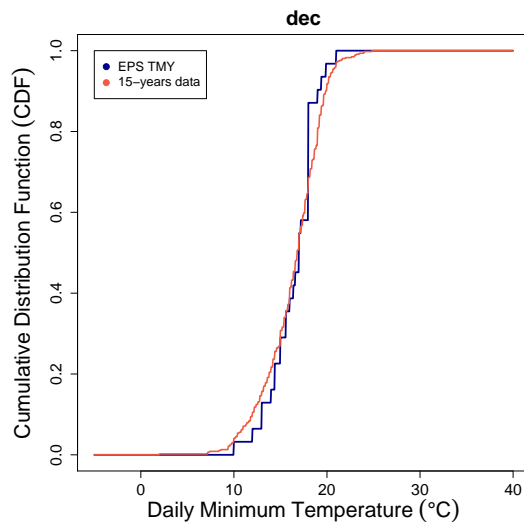
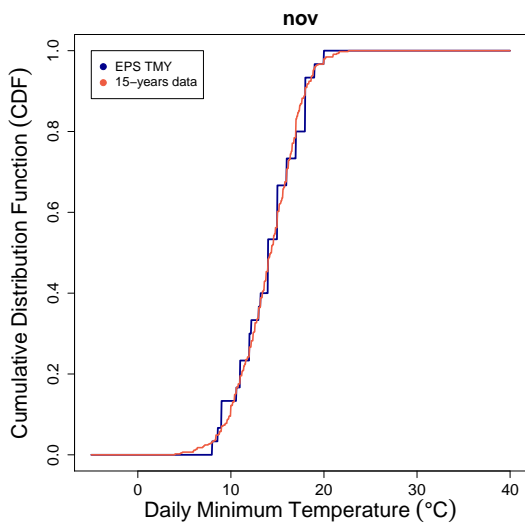
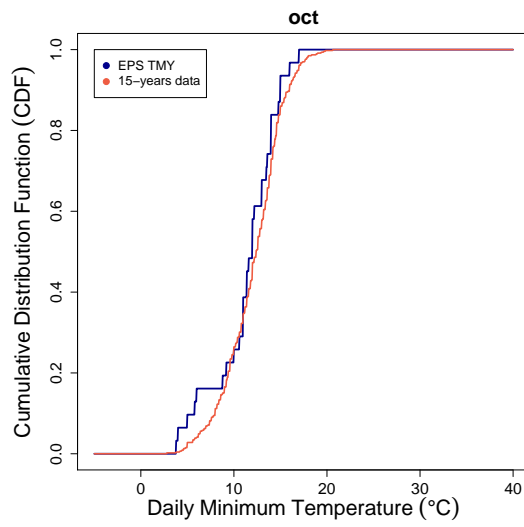
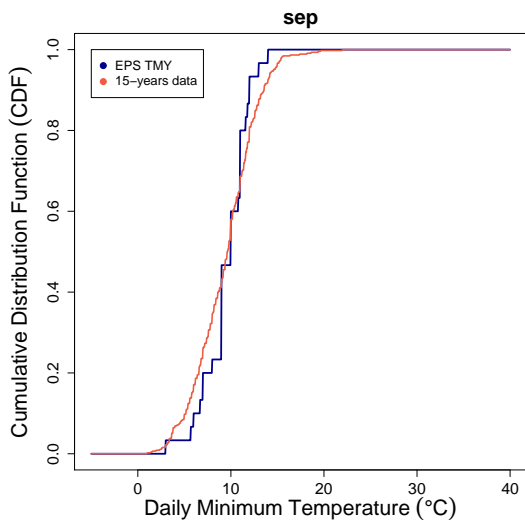
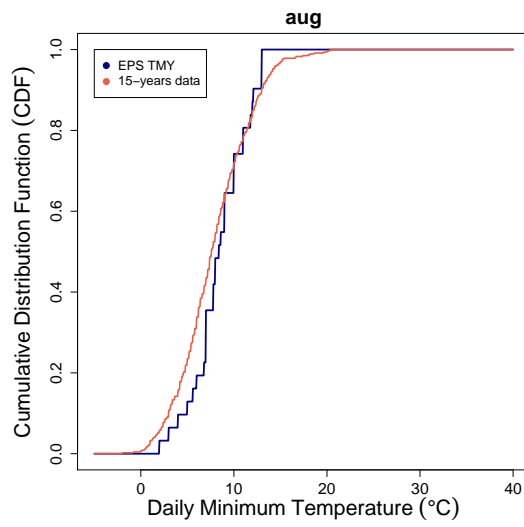
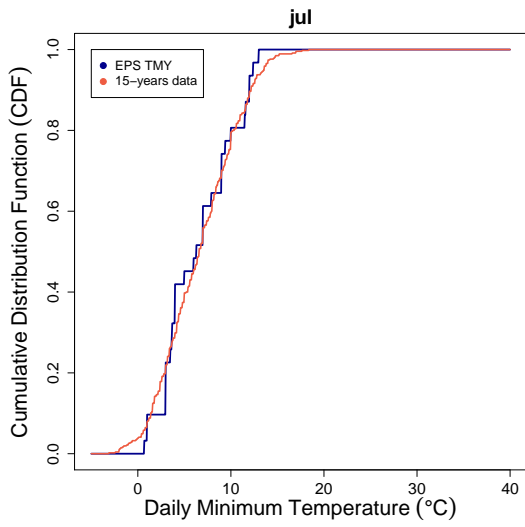


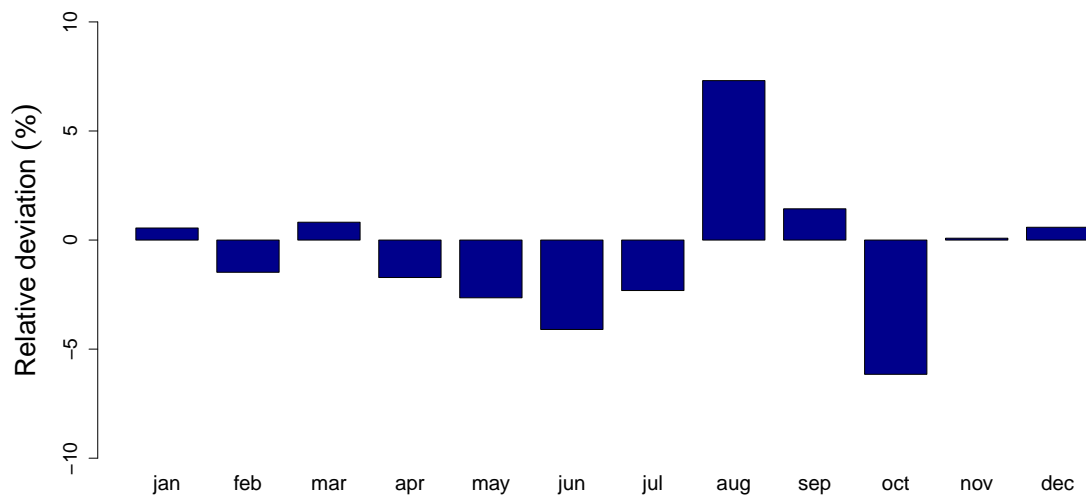
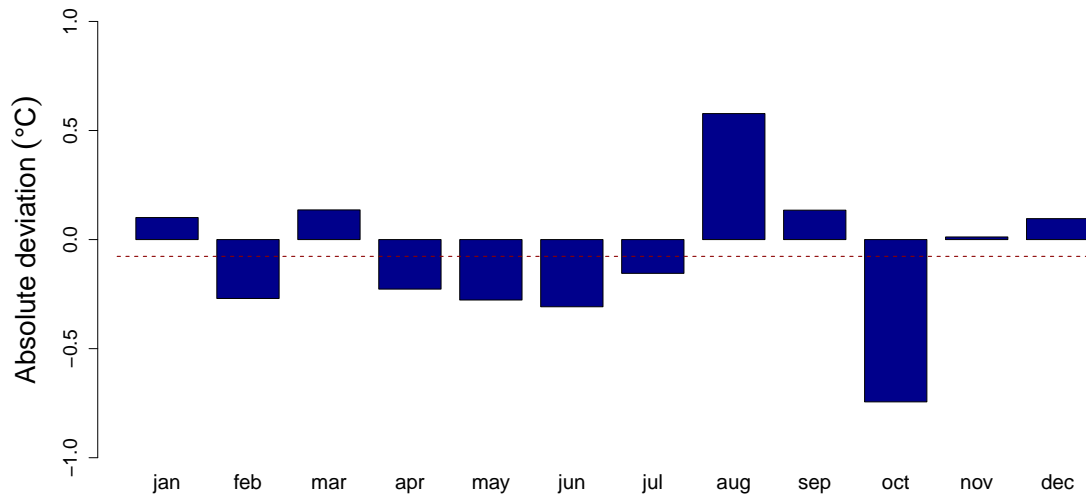
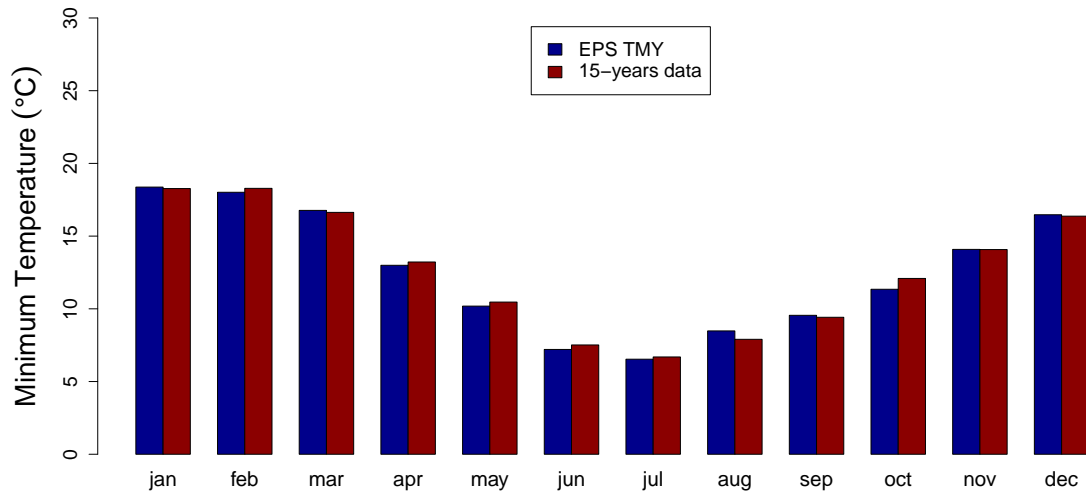


FS	jan	feb	mar	apr	may	jun	jul	aug	sep	oct	nov	dec
EPL	0.0282	0.0387	0.0515	0.0669	0.0469	0.0345	0.0526	0.0481	0.0379	0.0366	0.0530	0.0673
AMTU	0.1140	0.0447	0.0524	0.0373	0.0428	0.0447	0.0575	0.0493	0.0665	0.0375	0.0479	0.0428

4 Minimum temperature

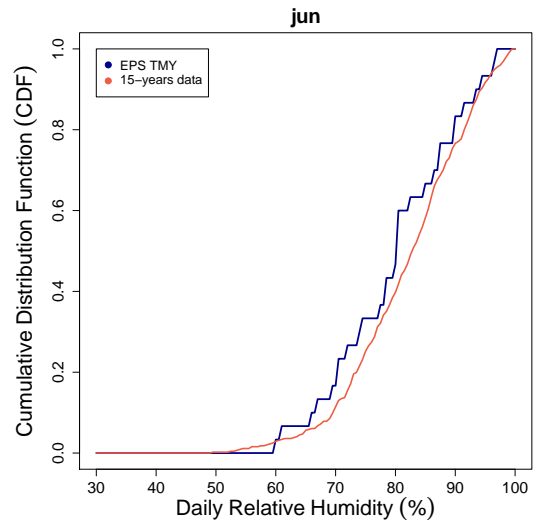
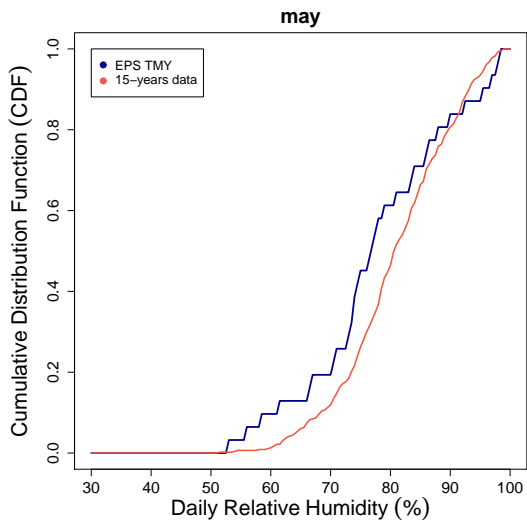
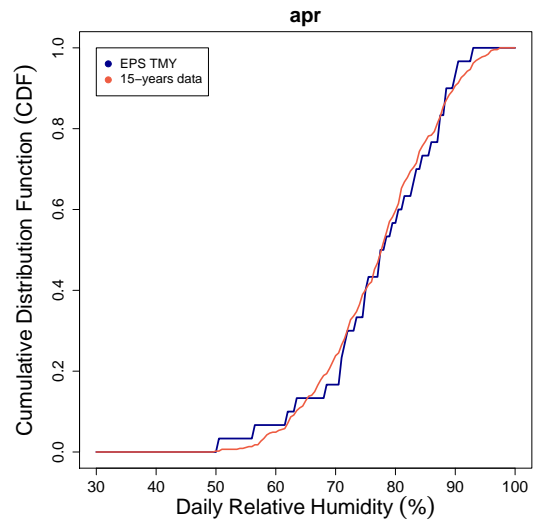
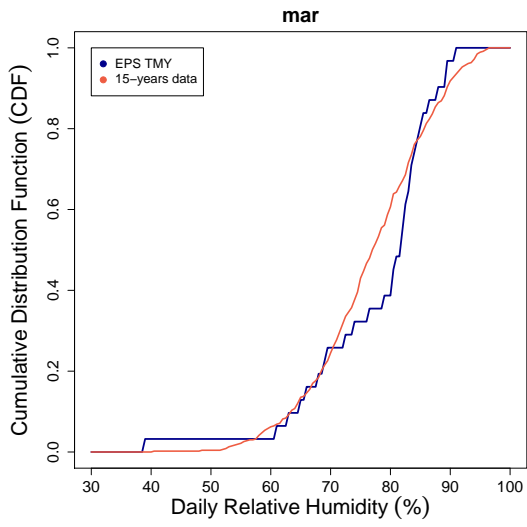
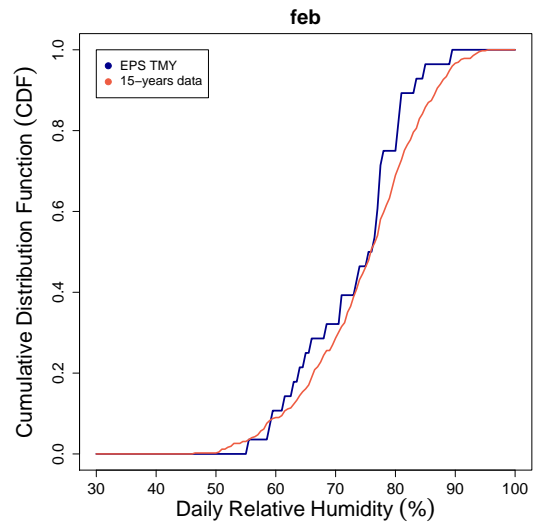
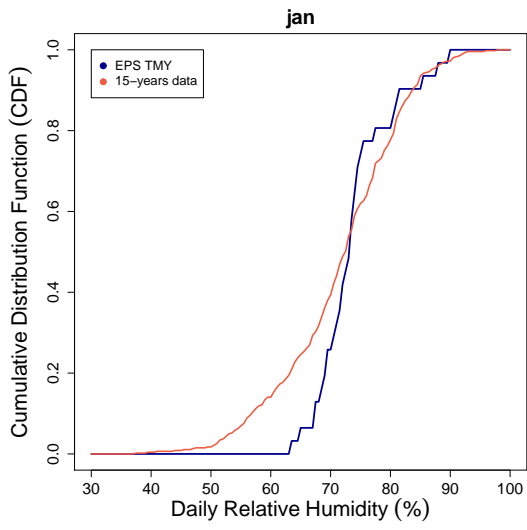


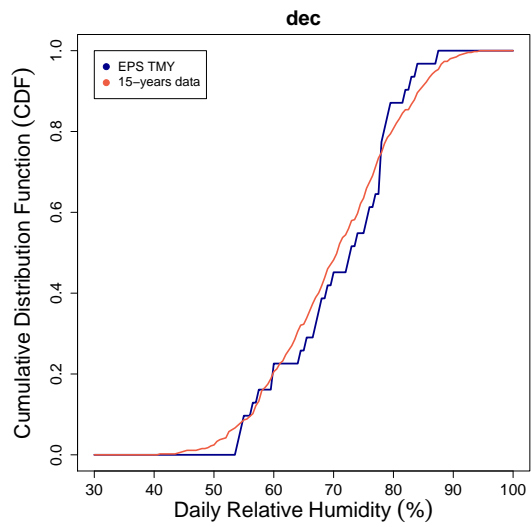
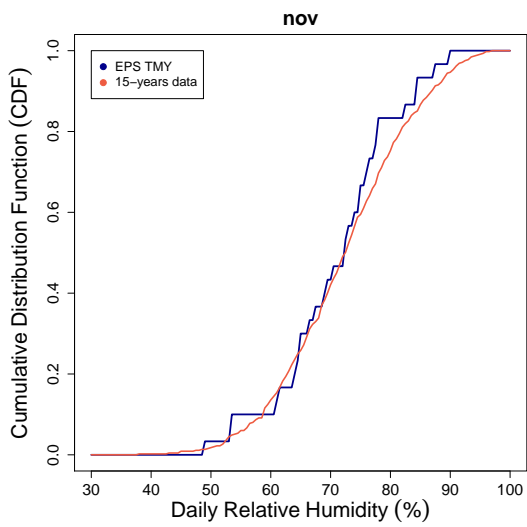
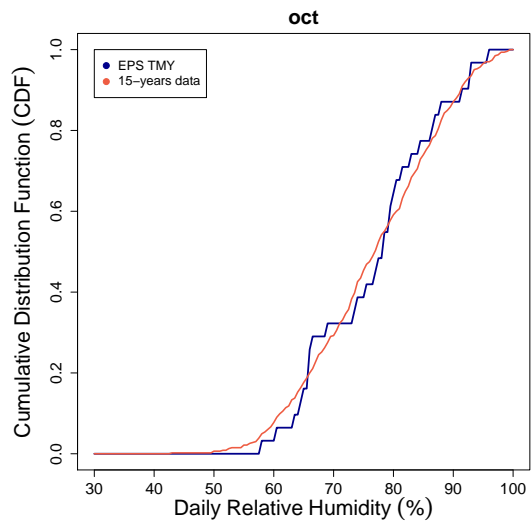
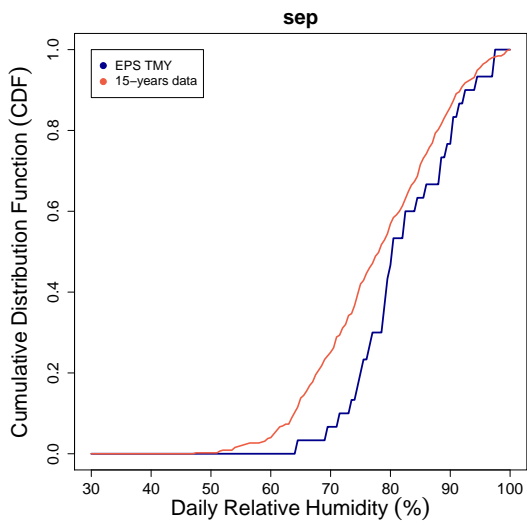
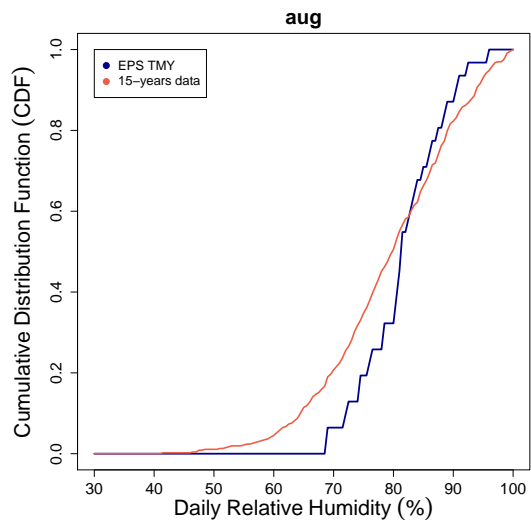
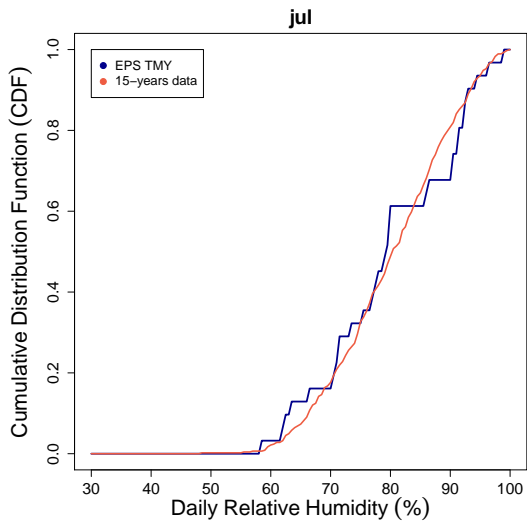


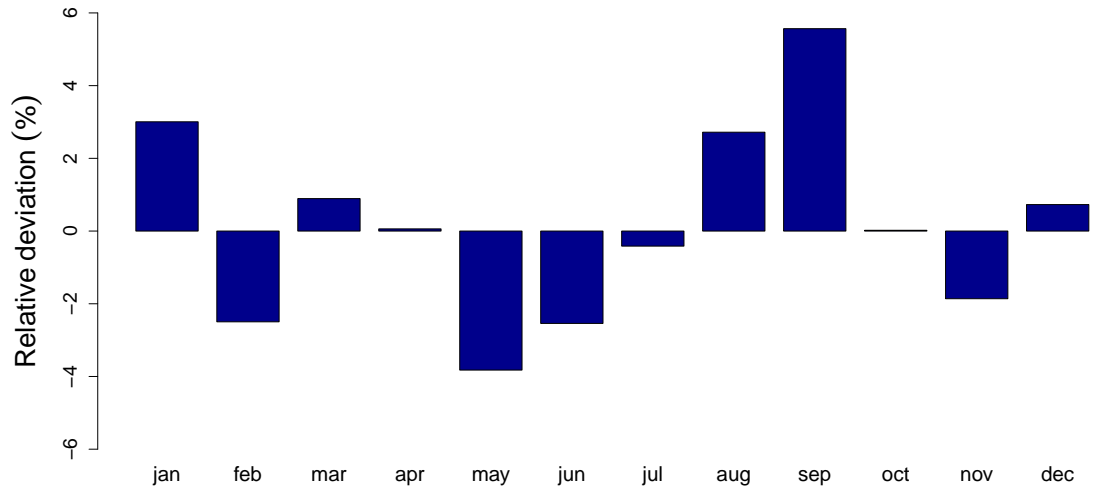
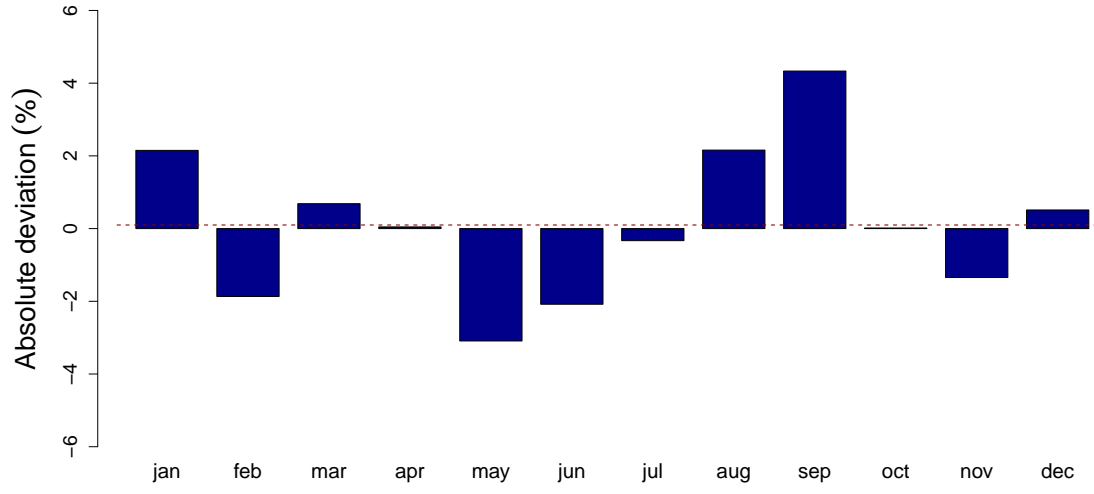
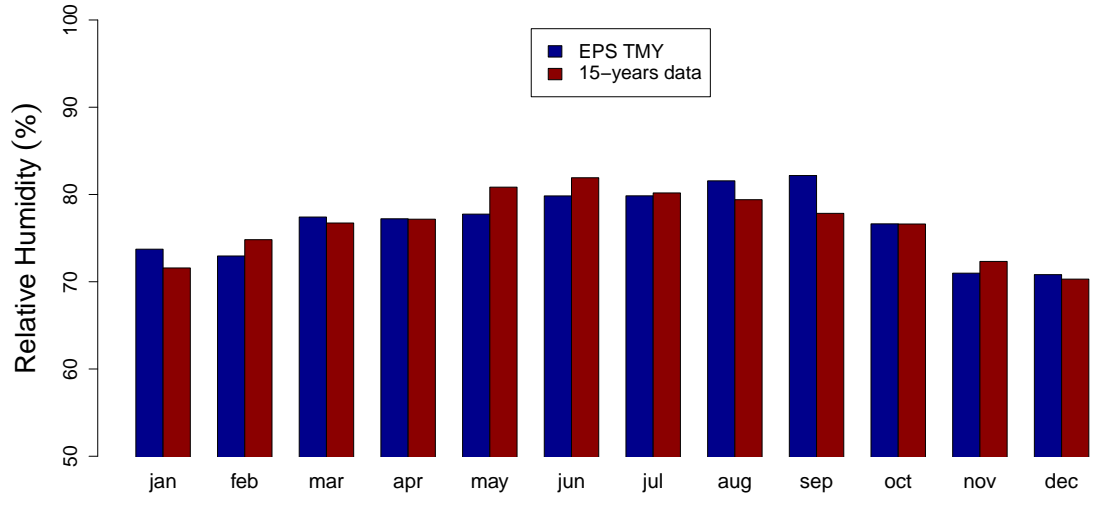


FS	jan	feb	mar	apr	may	jun	jul	aug	sep	oct	nov	dec
EPL	0.0427	0.0971	0.0581	0.0645	0.0491	0.0765	0.0400	0.0633	0.0660	0.0715	0.0347	0.0739
AMTU	0.0543	0.1029	0.0584	0.0295	0.0467	0.0453	0.0394	0.0783	0.0600	0.0411	0.0529	0.0527

5 Relative Humidity

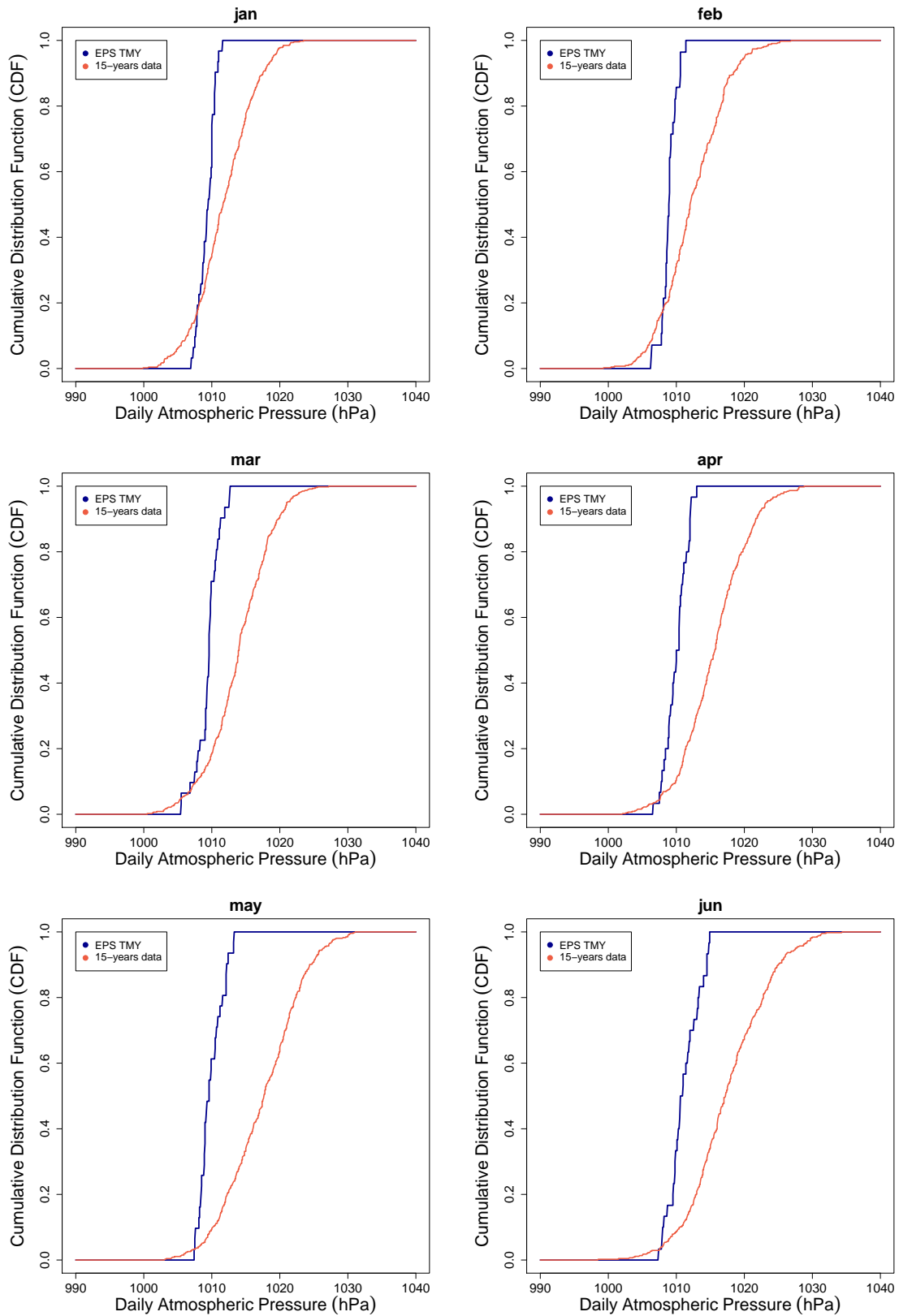


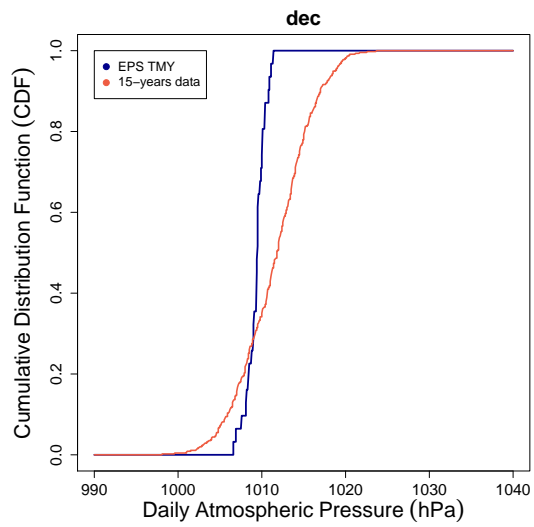
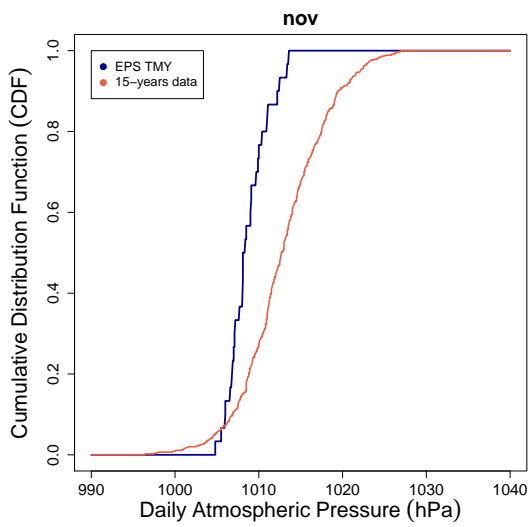
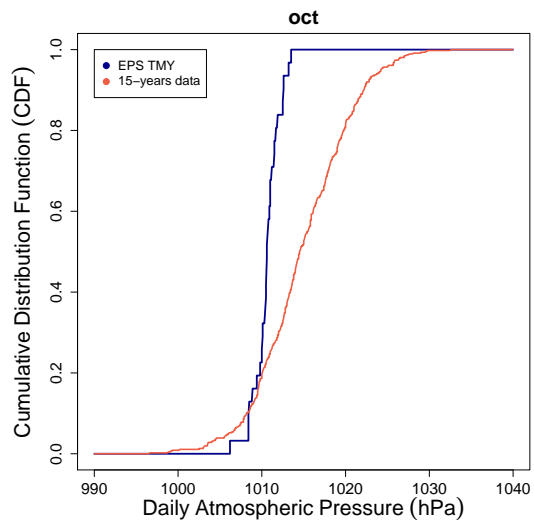
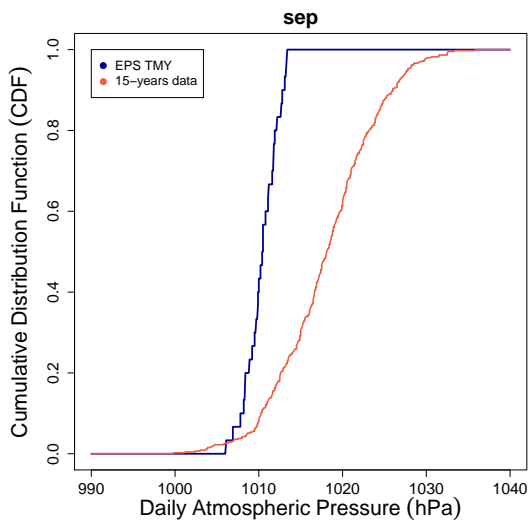
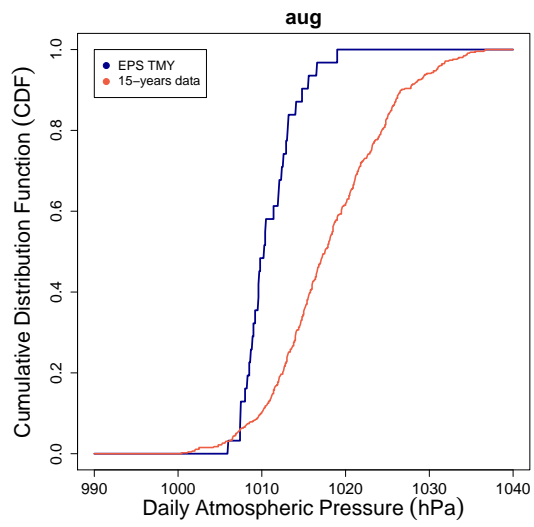
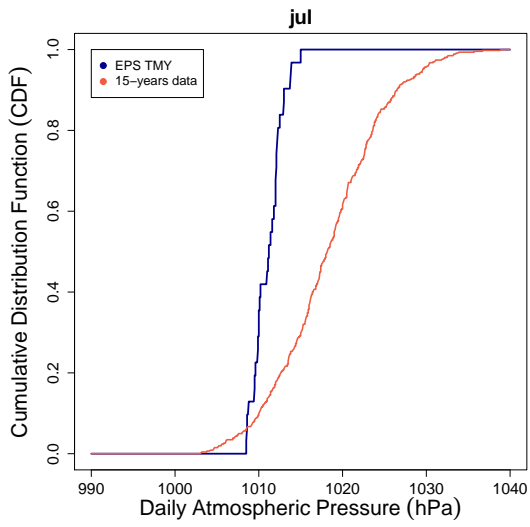


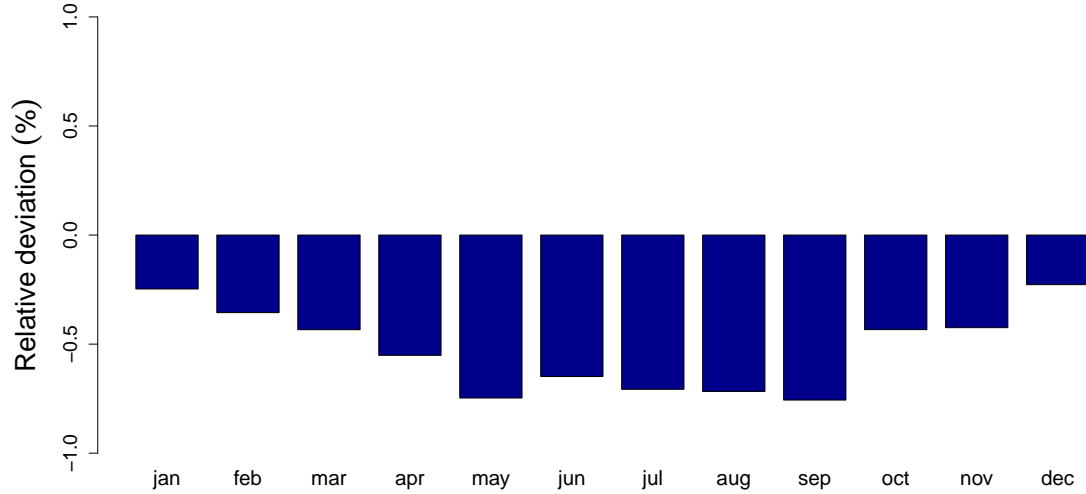
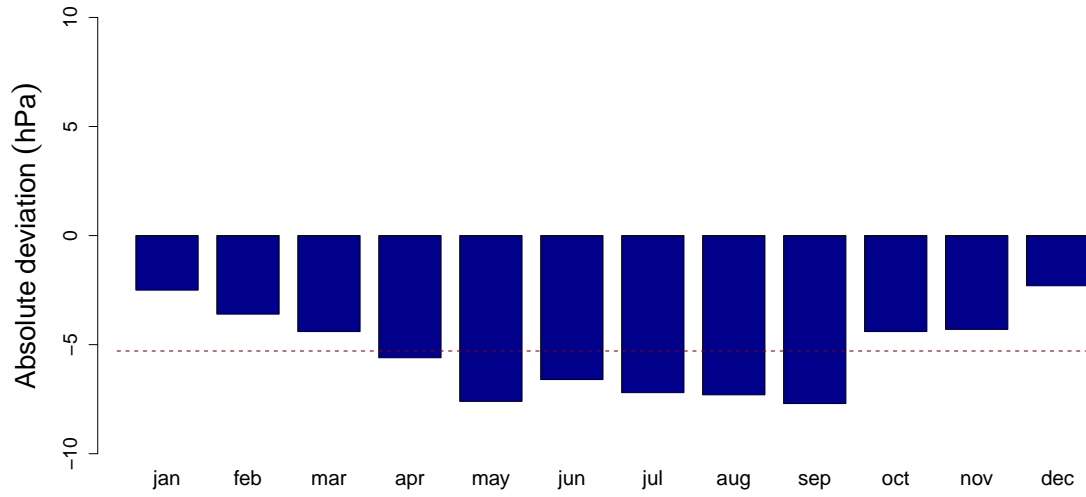
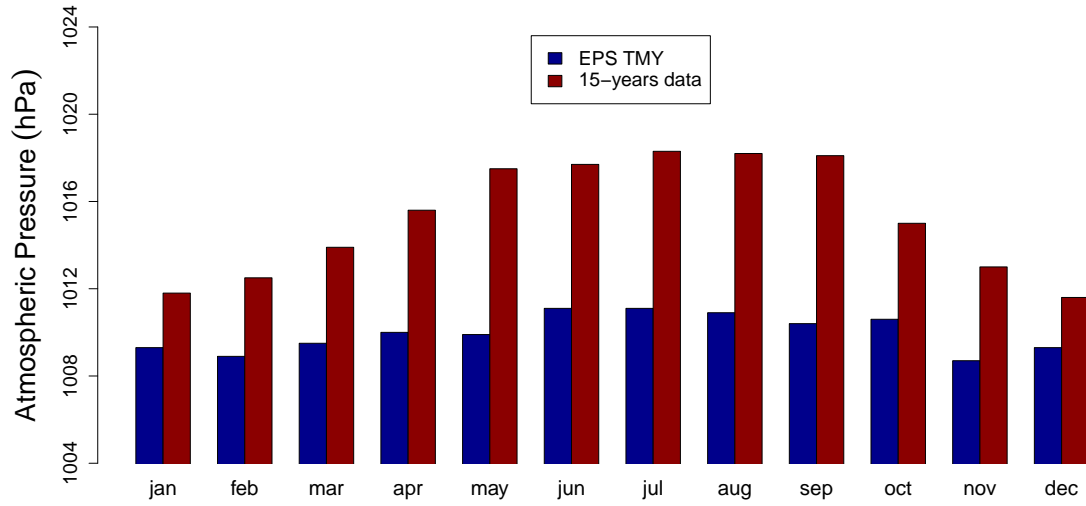


FS	jan	feb	mar	apr	may	jun	jul	aug	sep	oct	nov	dec
EPL	0.0937	0.0785	0.0632	0.0224	0.1060	0.0840	0.0444	0.0906	0.0983	0.0409	0.0499	0.0447
AMTU	0.0536	0.0658	0.0349	0.0646	0.0560	0.0323	0.0461	0.0951	0.0753	0.0696	0.0756	0.0460

6 Atmospheric Pressure







FS	jan	feb	mar	apr	may	jun	jul	aug	sep	oct	nov	dec
EPL	0.2438	0.2956	0.3444	0.3877	0.4174	0.3755	0.3748	0.3528	0.4065	0.2912	0.3052	0.2414
AMTU	0.0419	0.0203	0.0399	0.0462	0.0663	0.0798	0.0356	0.0638	0.0418	0.0963	0.0360	0.0876

References

- [1] R. Alonso-Suarez. Estimación del recurso solar en Uruguay mediante imágenes satelitales. Phd Thesis, Faculty of Engineering, UdelaR.
- [2] R. Alonso-Suárez, G. Abal, P. Musé, R. Siri. Satellite-derived solar irradiation map for Uruguay. *Energy Procedia* 57, ISES Solar World Congress 2013, Cancún, Méjico, pp. 1237–1246, 2014.
- [3] R. Alonso-Suárez, G. Abal, R. Siri, P. Musé. Brightness-dependent Tarpley model for global solar radiation estimation using GOES satellite images: application to Uruguay. *Solar Energy Journal*, vol. 86, pp. 3205–3215, 2012.
- [4] R. Alonso-Suárez, M. D'Angelo, G. Abal. Distribución espacial y temporal de la irradiación solar en el Uruguay. *Revista Brasileira de Energia Solar*, vol. 4(2), pp- 61–68, 2012.
- [5] R. Alonso-Suárez, M. Bidegain, G. Abal, P. Modernell. Año Meteorológico Típico para aplicaciones de Energía Solar (AMTUes): series horarias típicas para 5 sitios del Uruguay, 143 pages, 2016. <http://les.edu.uy/productos/amtues-2/>